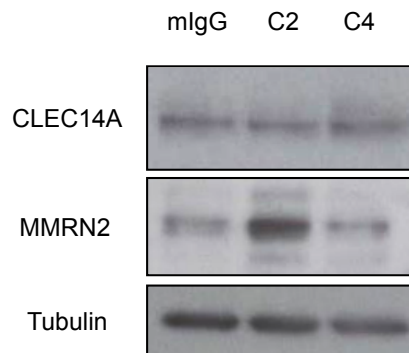


Supplemental Figure 1 - *Mmrn2* expression in *Clec14a*^{-/-} mice.

Quantitative PCR analysis of cDNA generated from aortas taken from three *clec14a*^{+/+} mice (white bars) and three *clec14a*^{-/-} mice (black bars) for *Mmrn2*. Relative expression was determined by normalising expression to flotillin2.



Supplemental Figure 2 - CLEC14A antibody treatment has no effect on CLEC14A expression.

HUVECs were treated with mIgG, C2 or C4 antibodies for 24 hours. Western blot analysis shows the relative levels of CLEC14A, MMRN2 and Tubulin.

	Percentage of animals
Male	49.5
Female	50.5
<i>Clec14a</i> ^{-/-}	26.4
<i>Clec14a</i> ^{-/+}	47.2
<i>Clec14a</i> ^{+/+}	26.4

Supplemental Table 1 - Normal breeding for *Clec14a*^{-/+} colony.