

Supporting online materials for:

**Combinatorial Treatment with Apelin-13 Enhances the Therapeutic Efficacy of a
Preconditioned Cell-Based Therapy for Peripheral Ischemia**

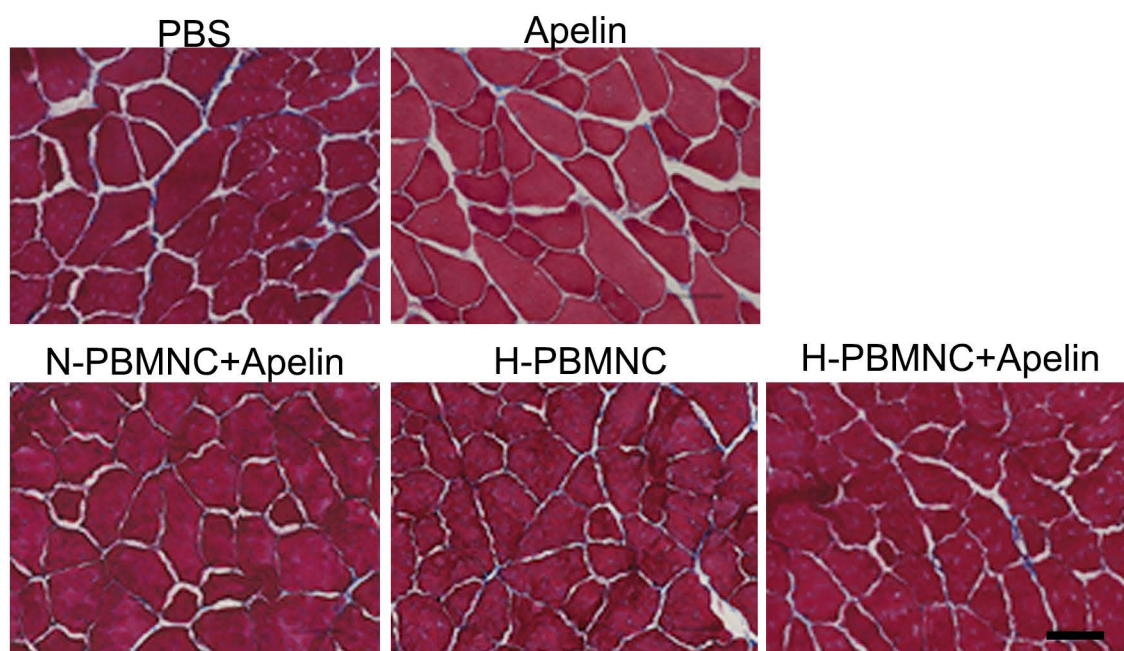
Makoto Samura, Noriyasu Morikage, Kotaro Suehiro, Yuya Tanaka, Tamami Nakamura,
Arata Nishimoto, Koji Ueno, Tohru Hosoyama, Kimikazu Hamano

To whom correspondence should be addressed to:

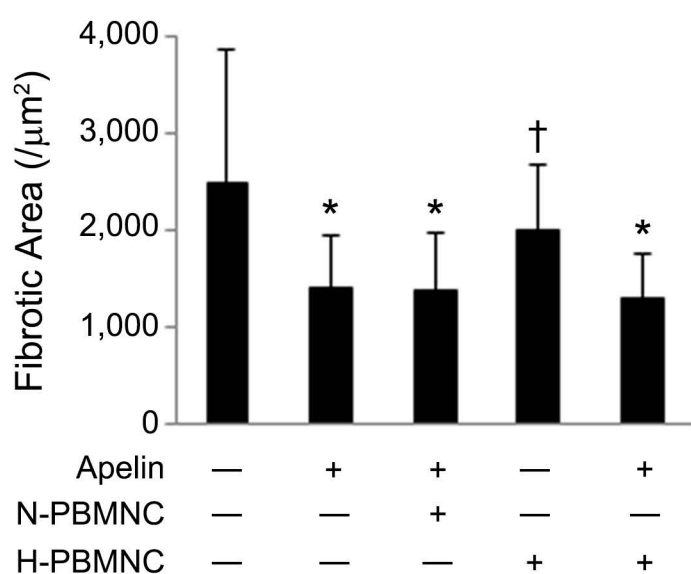
Tohru Hosoyama (E-mail: toruhoso@yamaguchi-u.ac.jp)

This PDF file includes: Supplementary Figure S1.

a



b



Supplementary Figure S1. Fibrosis analysis in ischemic hindlimbs on POD 28. (a) Masson's trichrome staining was performed on mouse muscle-cross sections of ischemic hindlimbs. Scale bar = 50 μm. Blue: fibrotic tissues. (b) Statistic analysis for fibrotic area in muscle-cross sections. *: $p < 0.01$ vs. PBS or H-PBMNC group; †: $p < 0.01$ vs. PBS group.