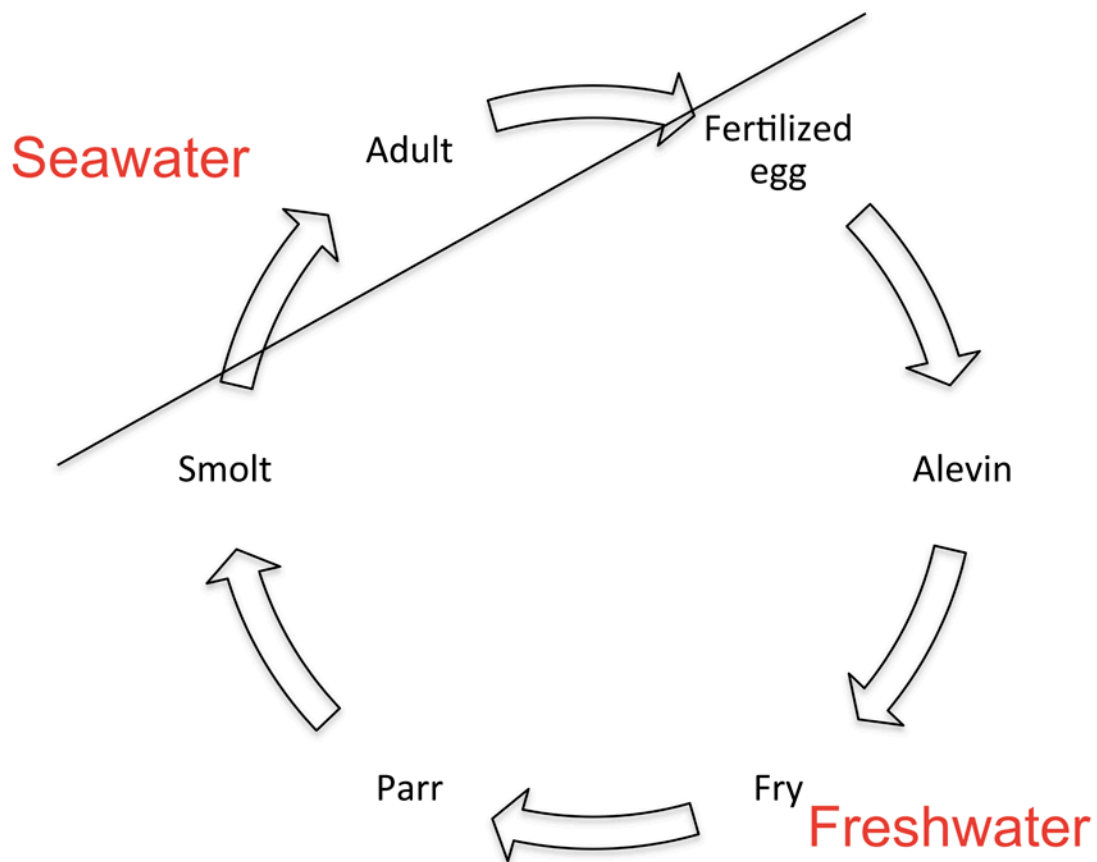


**Supplementary figures**

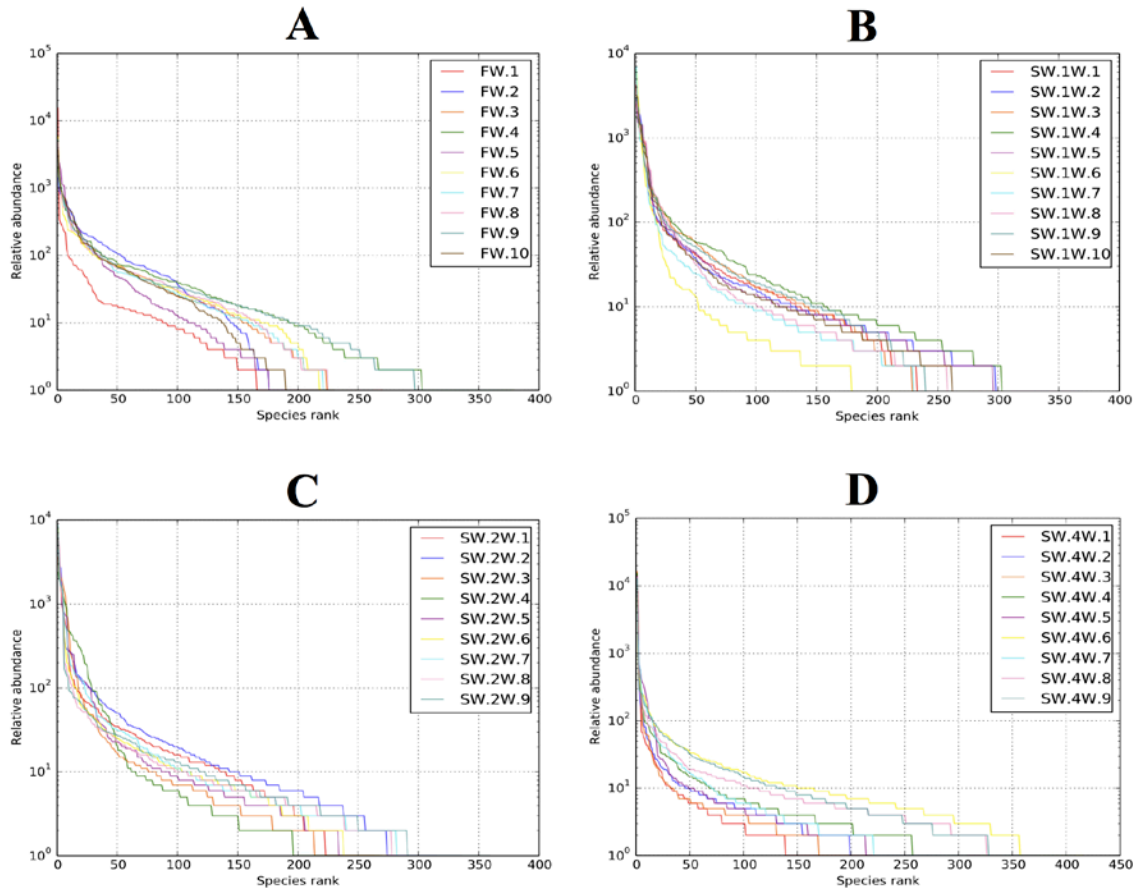
**Transition from freshwater to seawater reshapes the skin-associated microbiota of Atlantic salmon**

Jep Lokesh, Viswanath Kiron

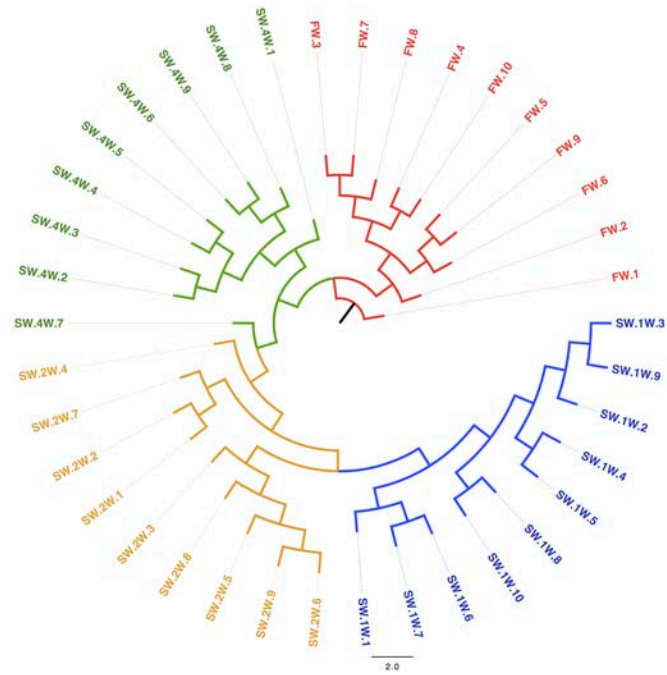


**Supplementary Figure S1: Life cycle of Atlantic salmon under aquaculture.**

Fertilized eggs of Atlantic salmon are hatched and grown until the fish reach smolt stage (~50-100g). Once the smoltification is completed, they are transferred to the seawater where they are grown to market size (~4-5Kg).



**Supplementary Figure S2: Rank abundance plot.** Plot showing the ranking of abundances of different OTUs in FW (A), SW.1W (B), SW.2W (C) and SW.4W (D) groups.



**Supplementary Figure S3: Hierarchical clustering of Atlantic salmon skin microbiota.** UPGMA (Unweighted Pair Group Method with Arithmetic Mean) hierarchical clustering on the weighted UniFrac distances also demonstrated a trend similar to that obtained by PCoA.