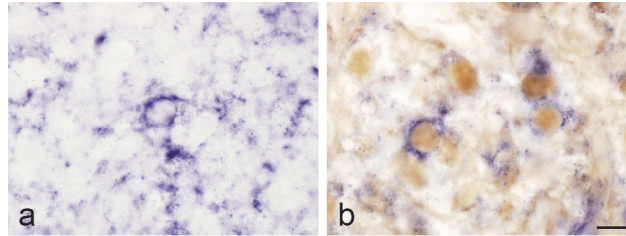


Supplementary Figure 1



Supplementary Fig. 1. *In situ* hybridization of TIMP2 in the posterior lobe of the rat pituitary. TIMP2 mRNA was detected in pituicyte cytoplasm (a). TIMP2-expressing pituicytes were identified by S100 protein immunoreactivity (b). *In situ* hybridization with NBT/BCIP is blue and immunostaining with 3,3'-diaminobenzidine is brown. Bar=10 μ m (a, b).