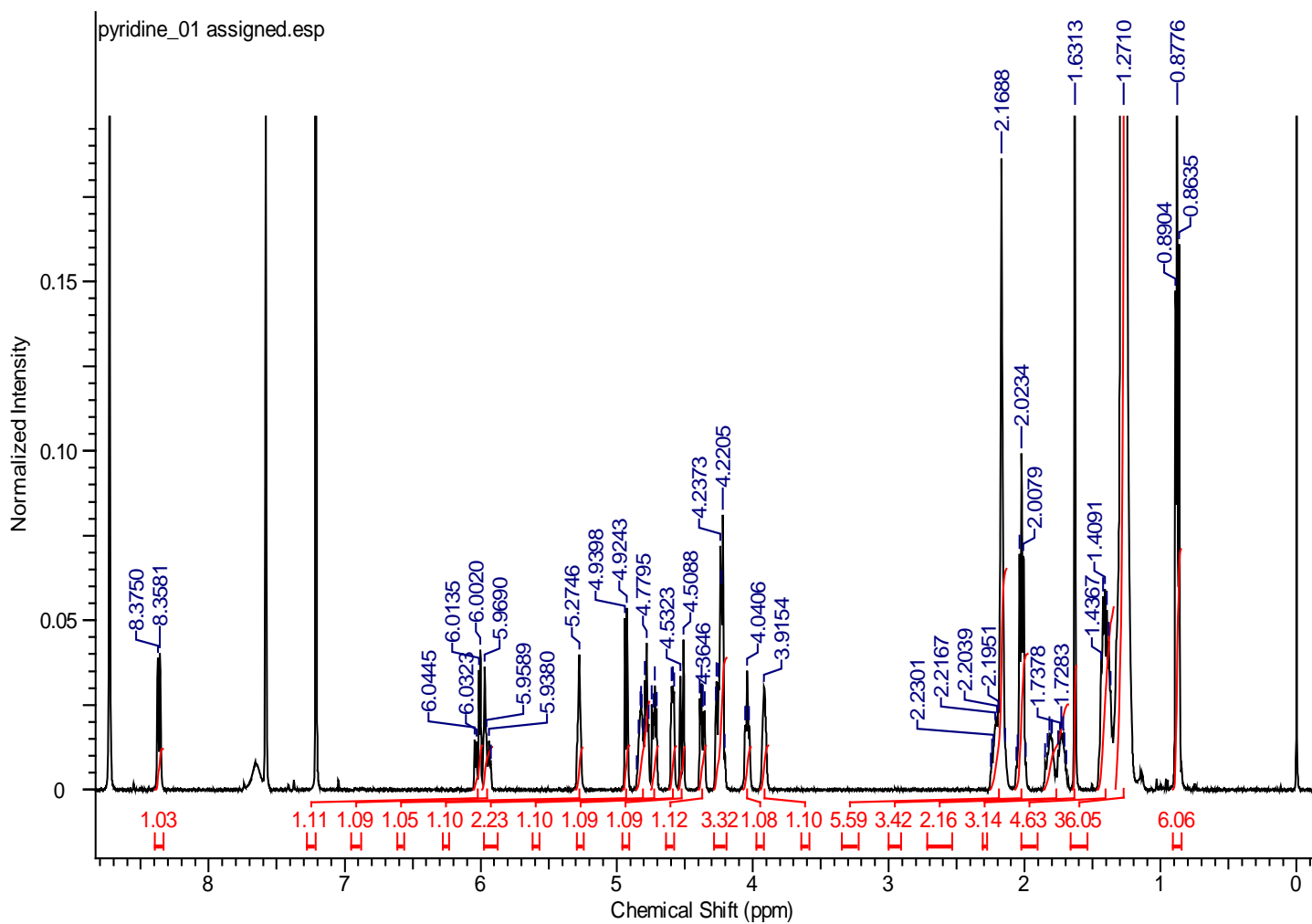
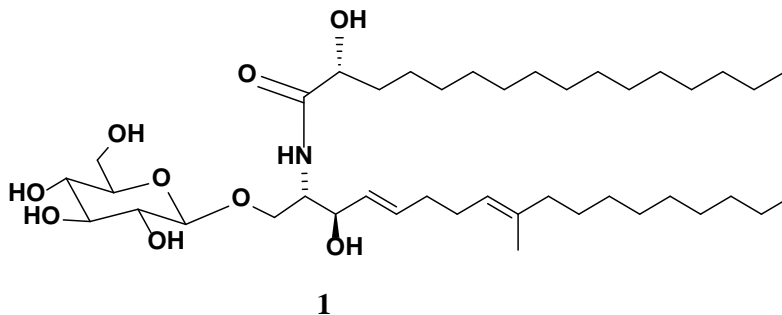
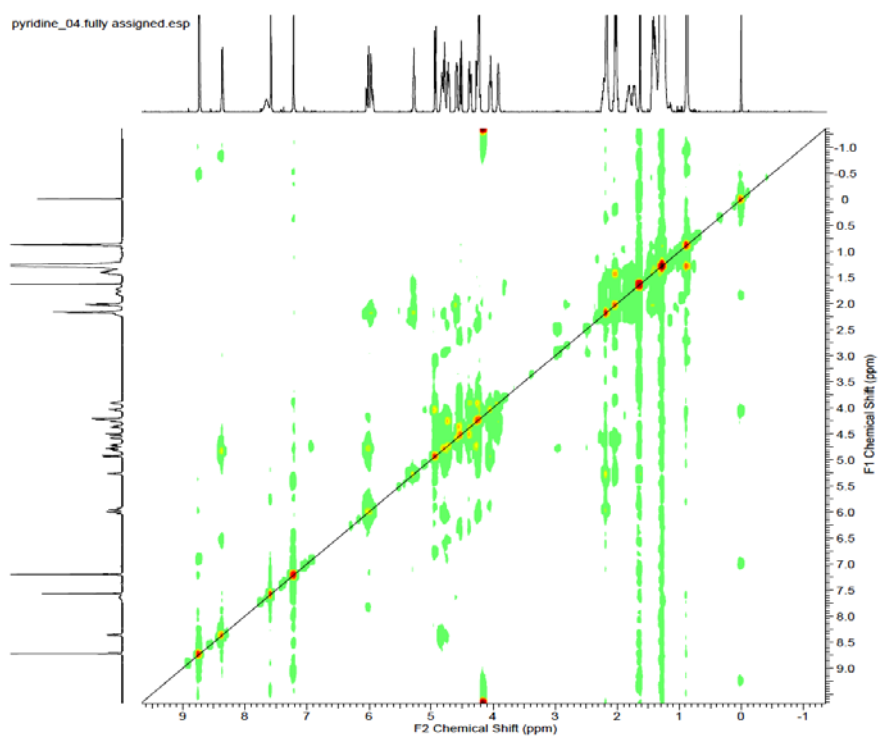


**Supplemental data:**

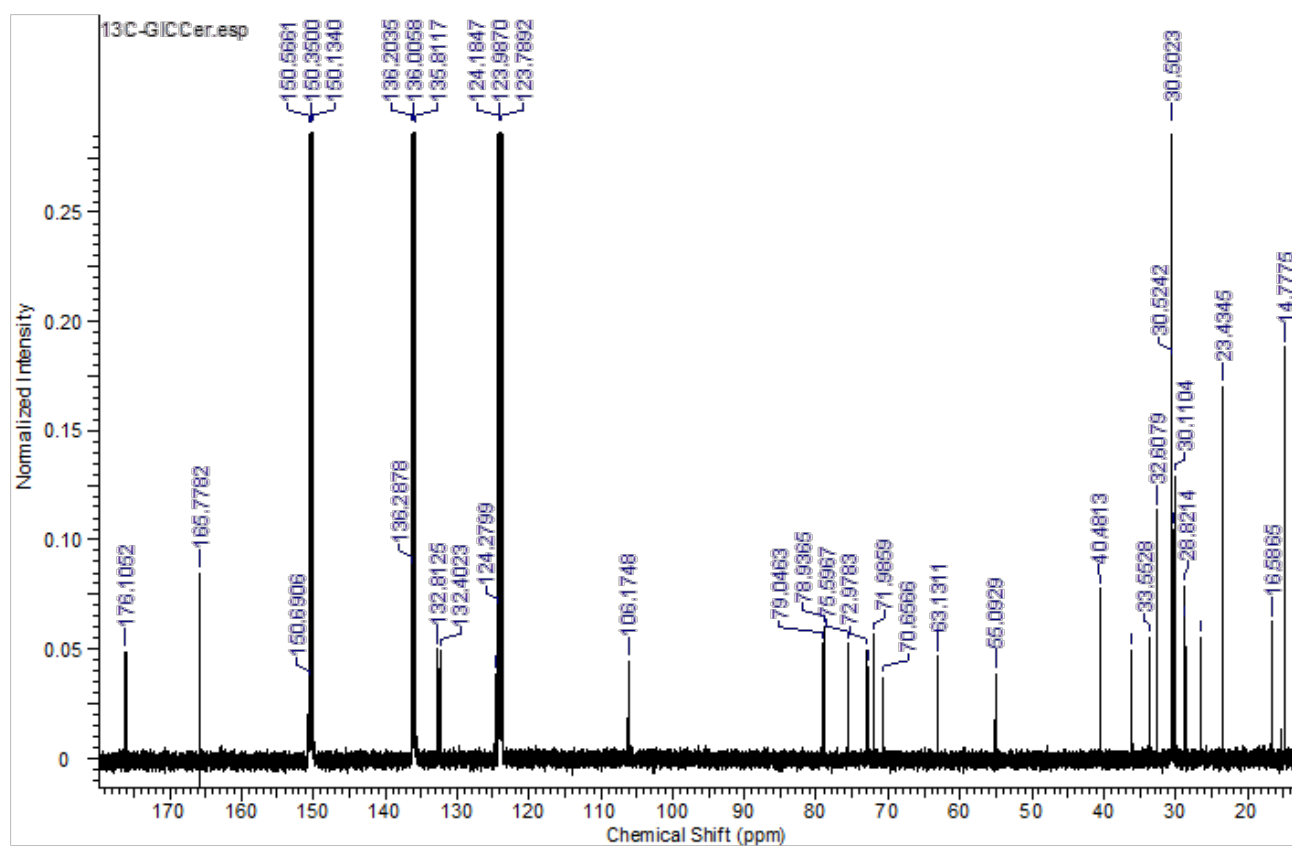
**<sup>1</sup>H-NMR spectrum of GlcCer 1**



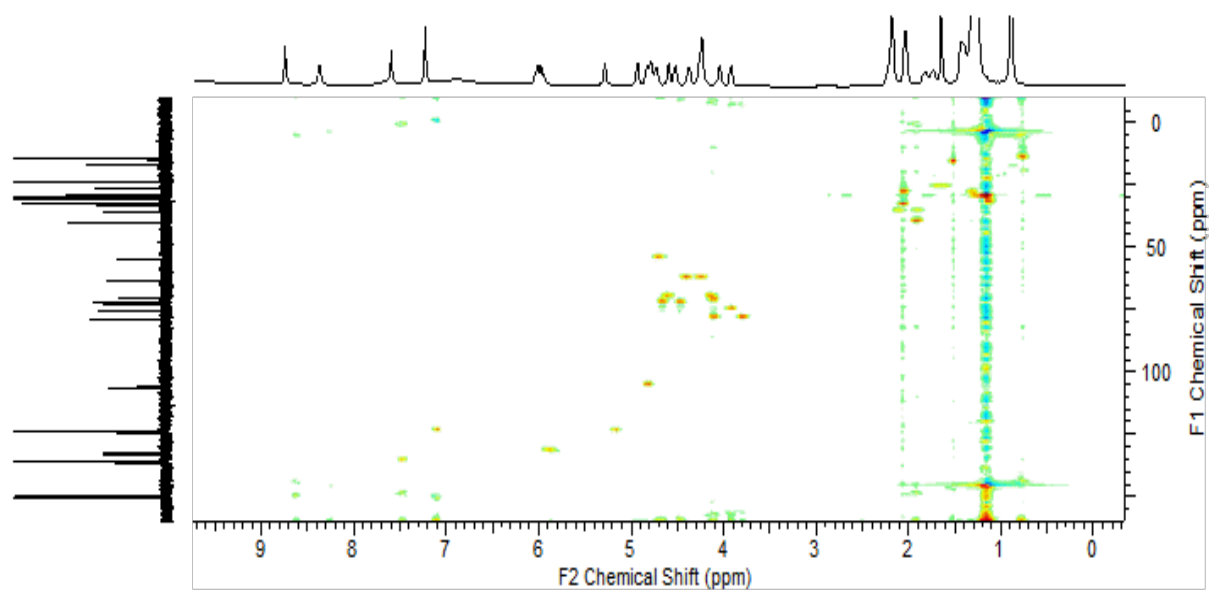
## $^1\text{H}$ - $^1\text{H}$ COSY spectrum of GlcCer 1



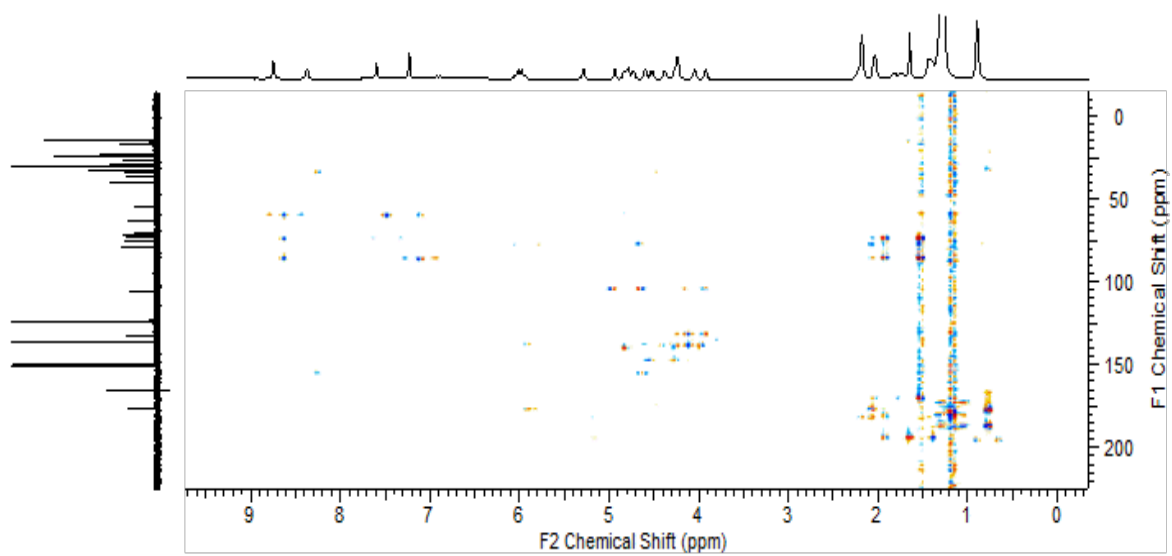
## $^{13}\text{C}$ - spectrum of GlcCer 1



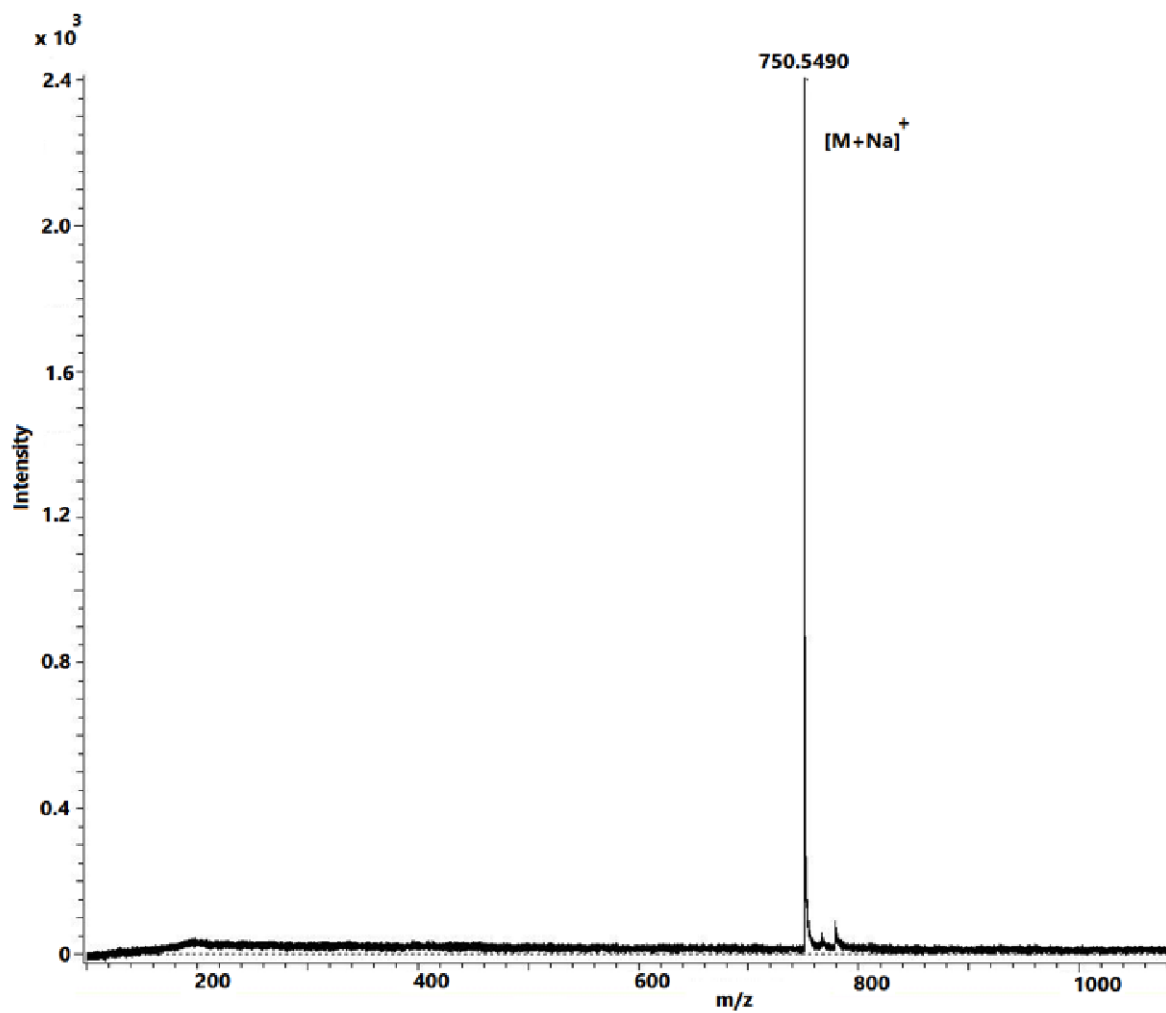
### HMQC spectrum of GlcCer 1



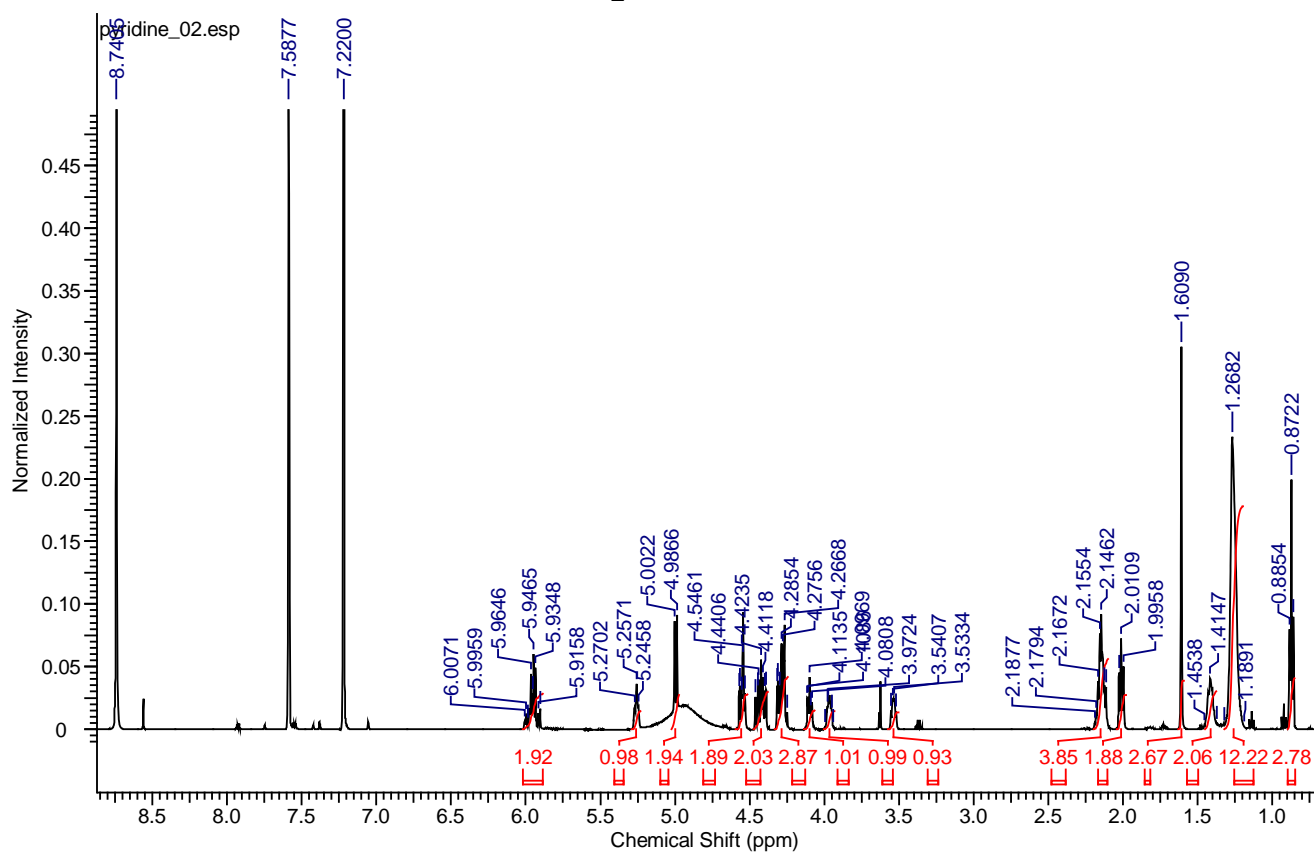
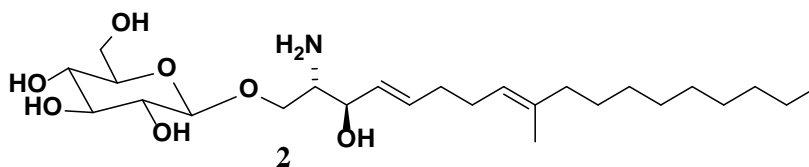
### HMBC spectrum of GlcCer 1



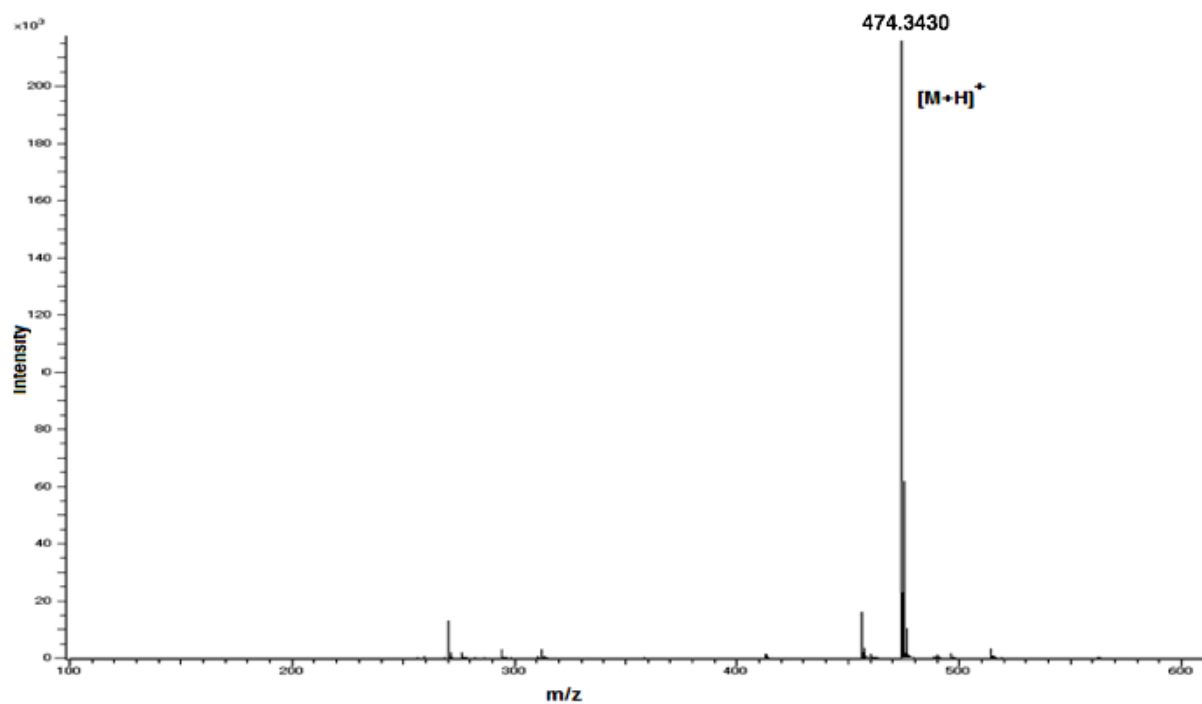
# ESI-mass spectrum of GlcCer 1



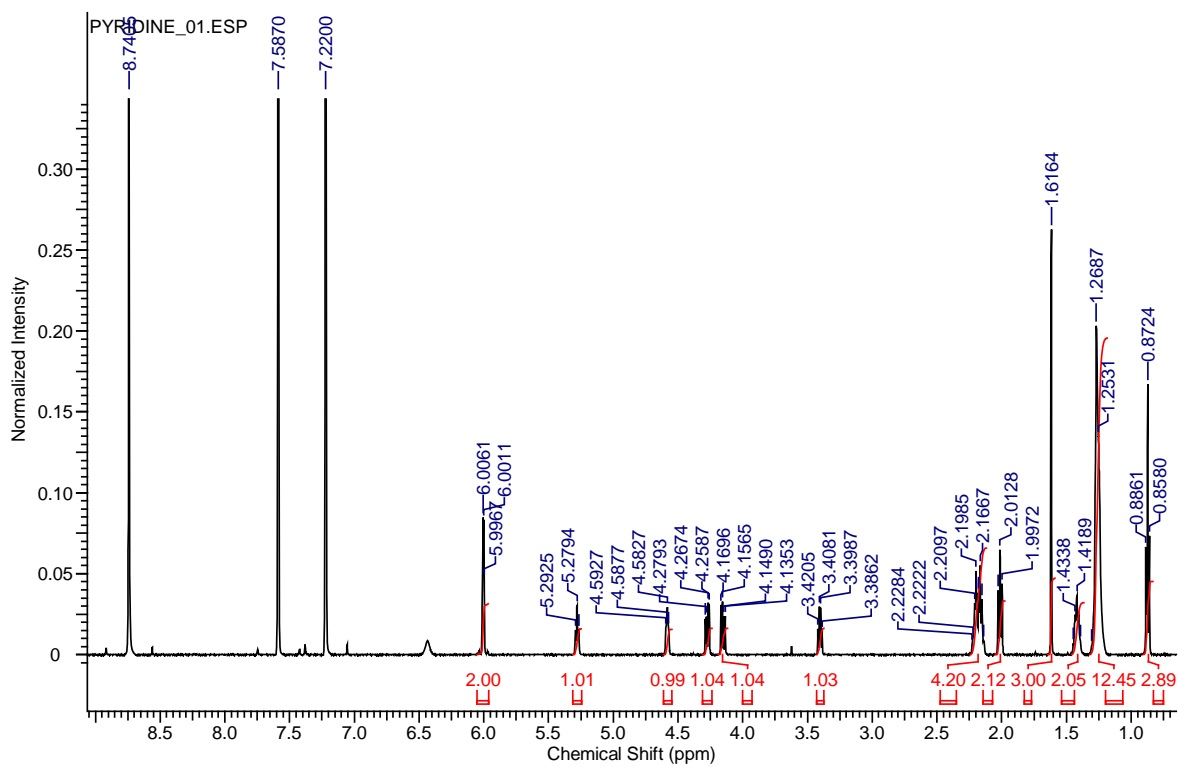
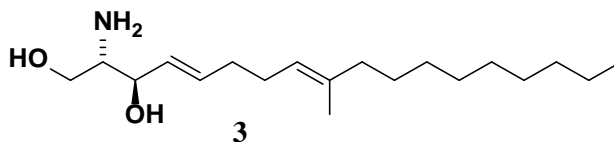
### <sup>1</sup>H-NMR spectrum of 2



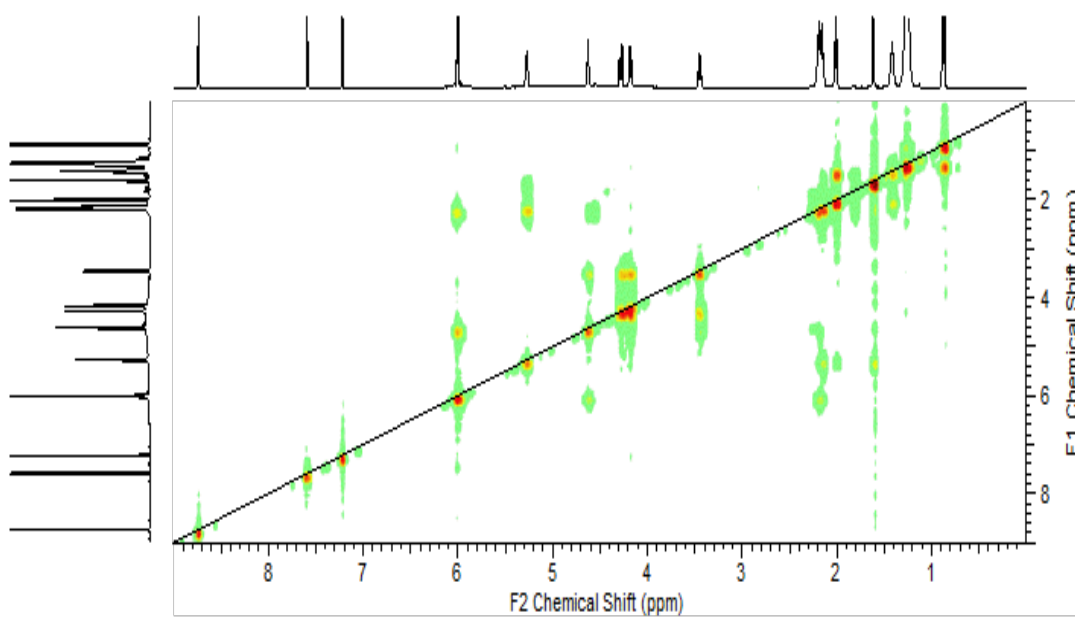
### ESI-mass spectrum of 2



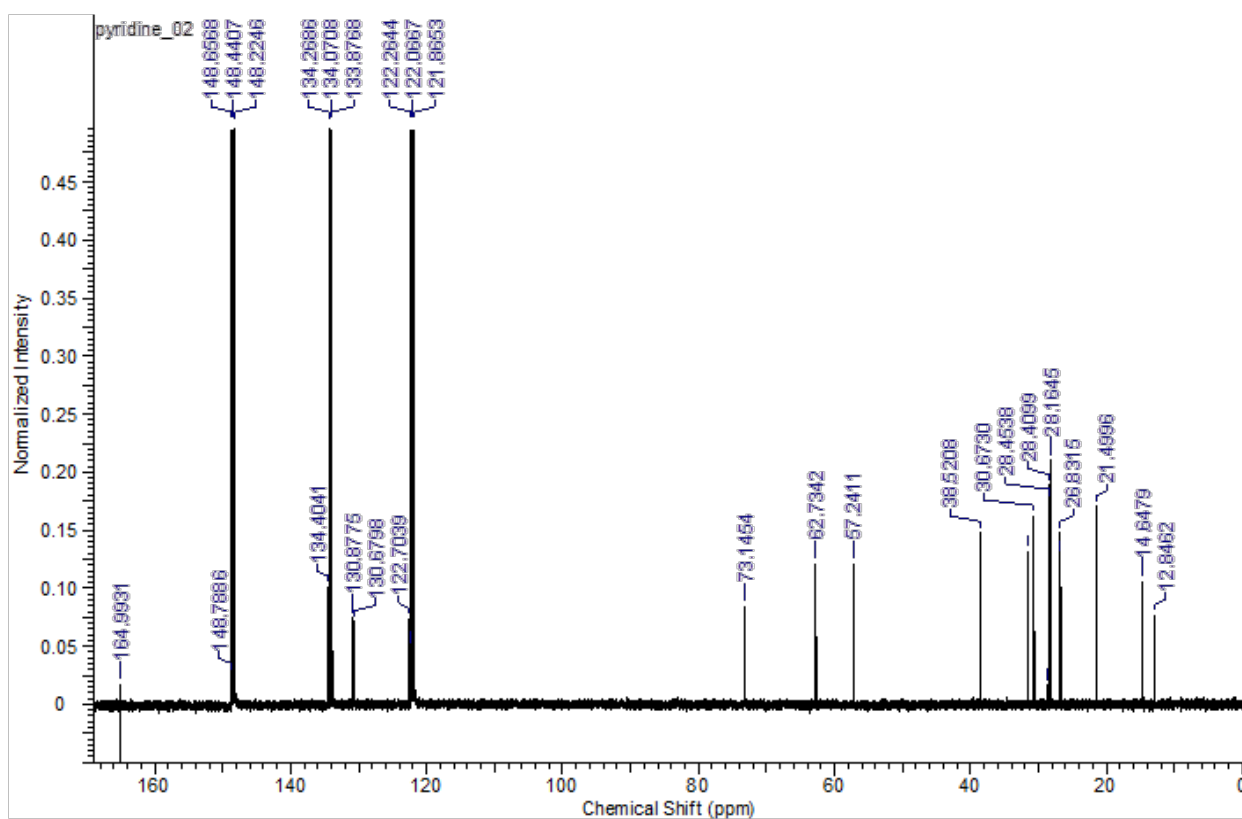
<sup>1</sup>H-NMR spectrum of 3



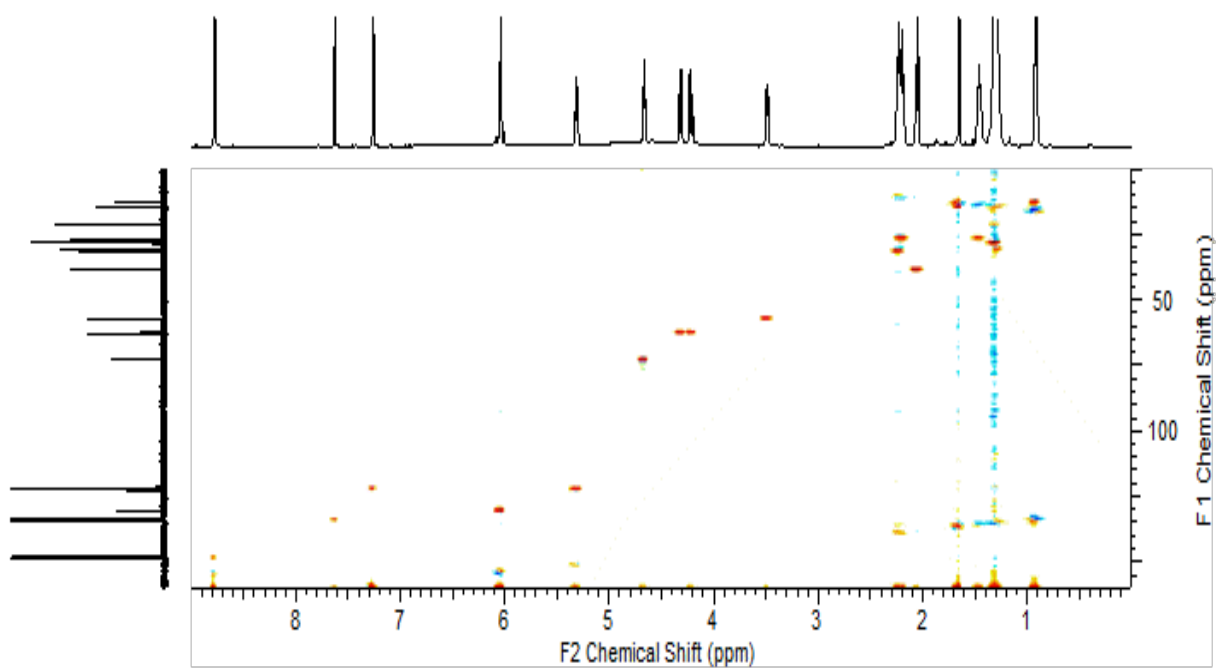
<sup>1</sup>H-<sup>1</sup>H COSY spectrum of 3



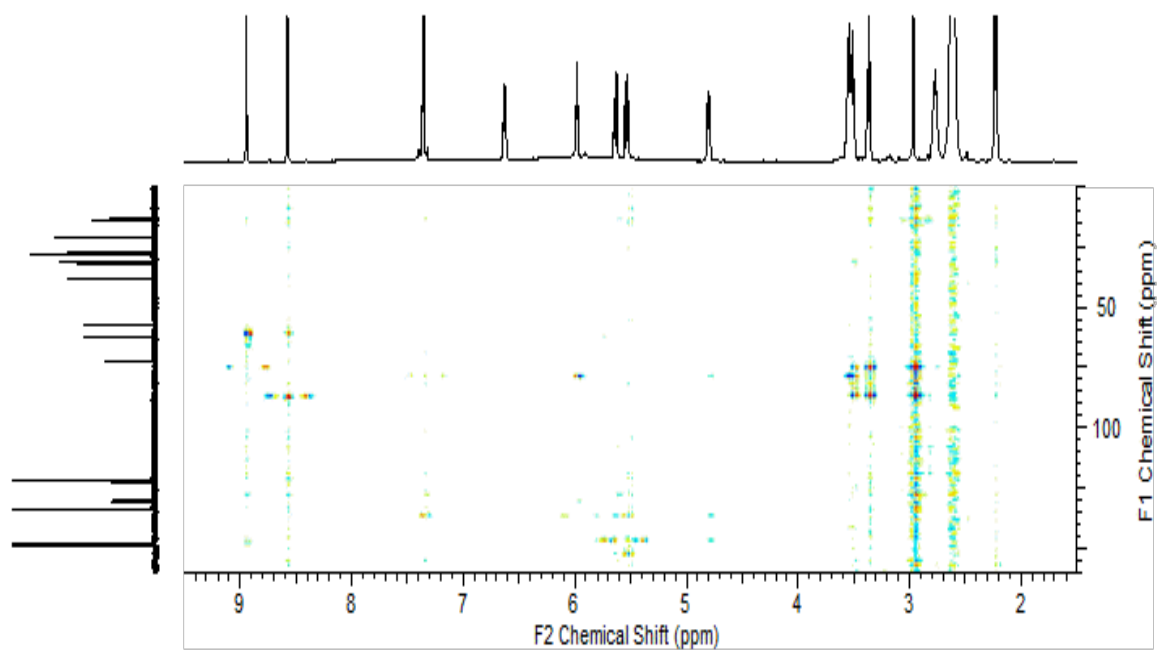
### <sup>13</sup>C- spectrum of 3



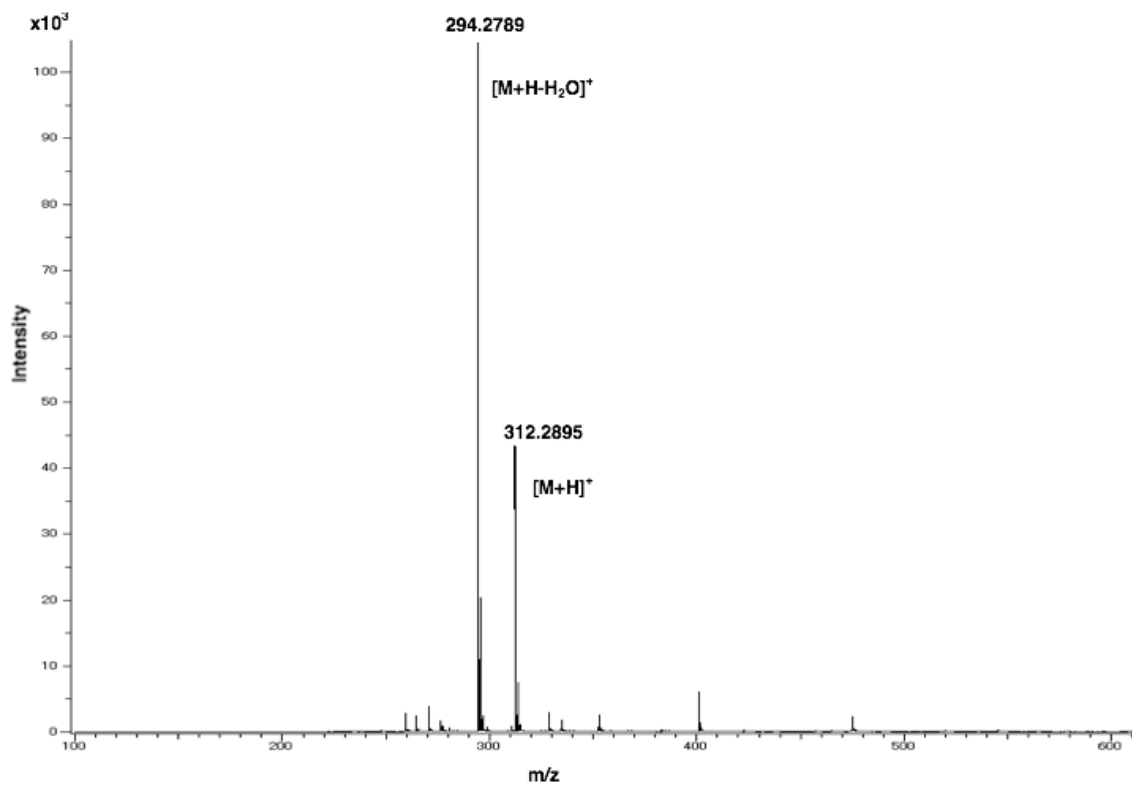
### HMQC spectrum of 3



### HMBC spectrum of 3

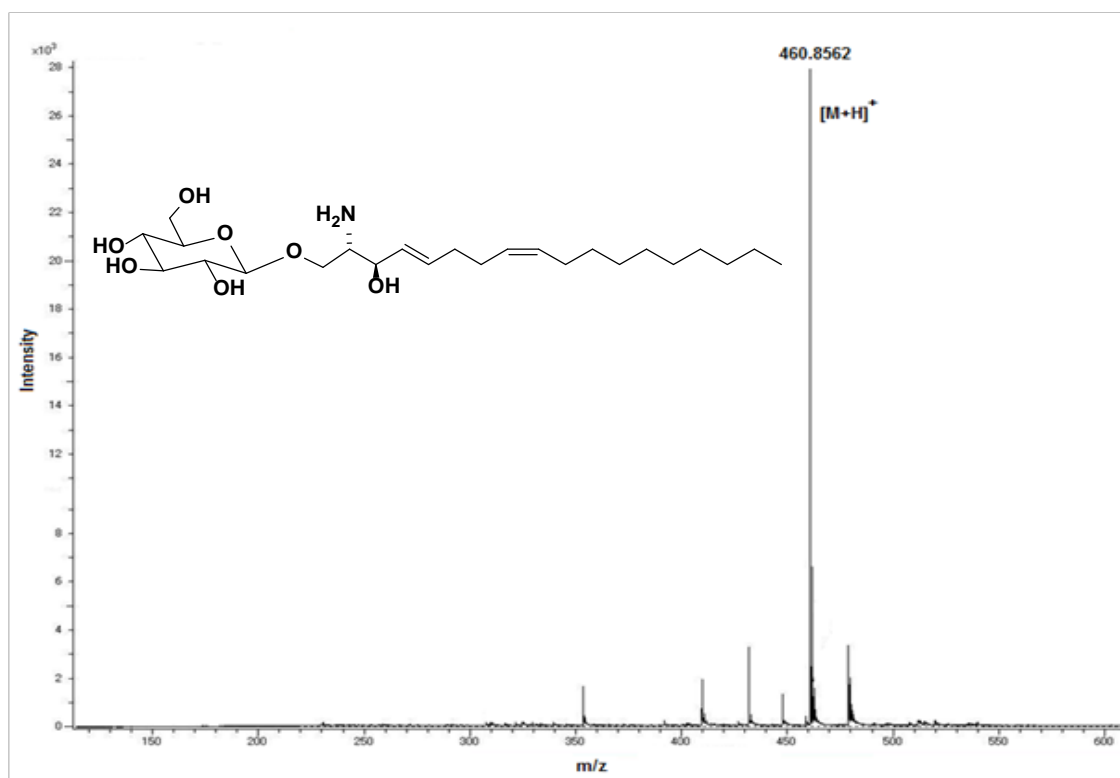


### ESI-mass spectrum of 3

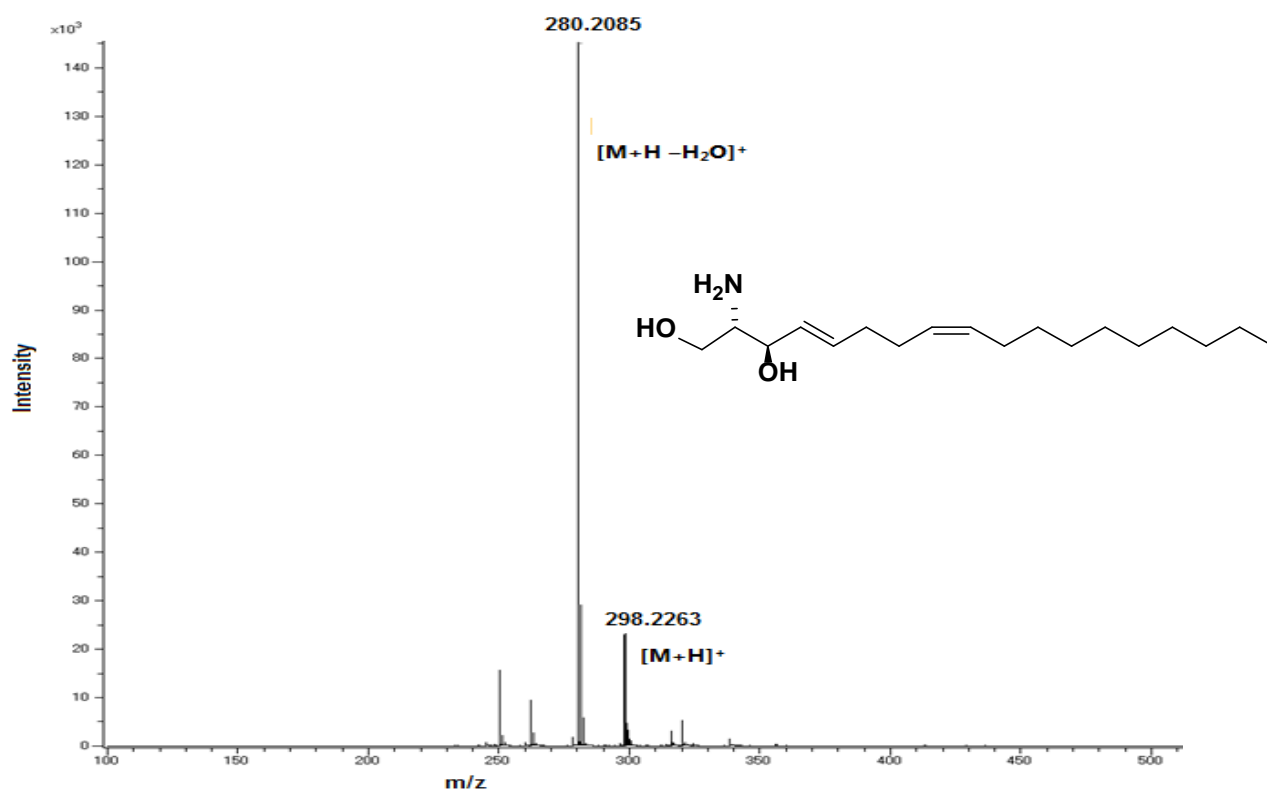




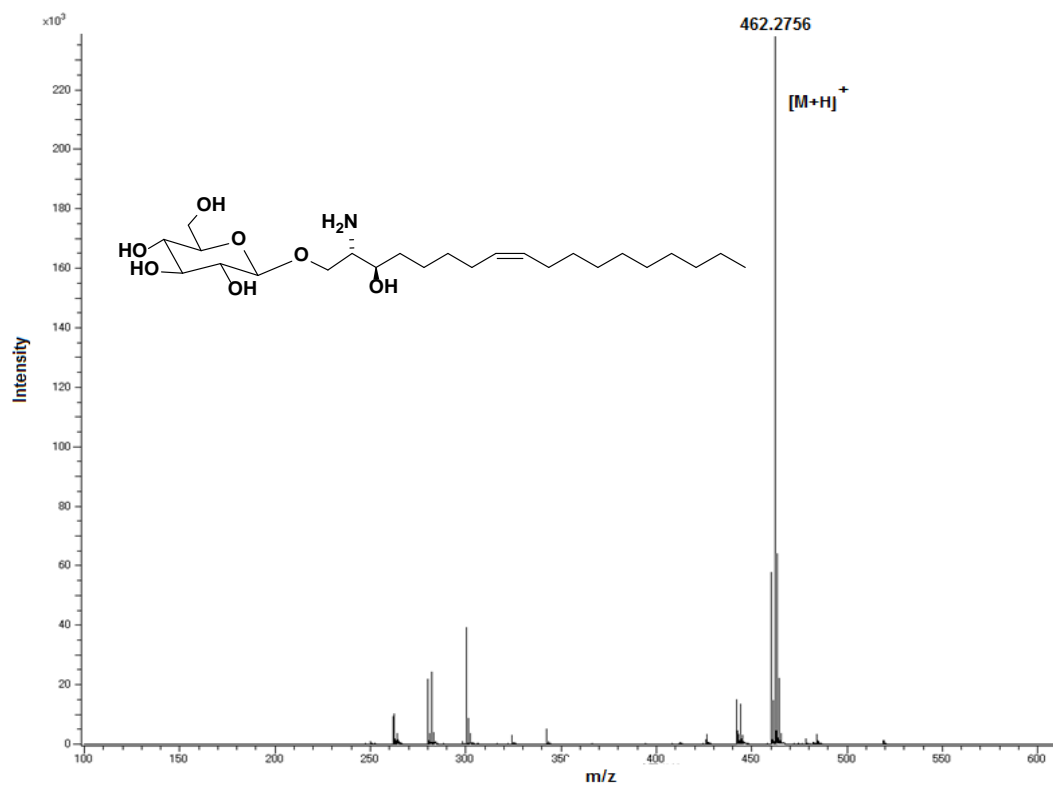
### ESI-mass spectrum of rice lyso-GlcCers



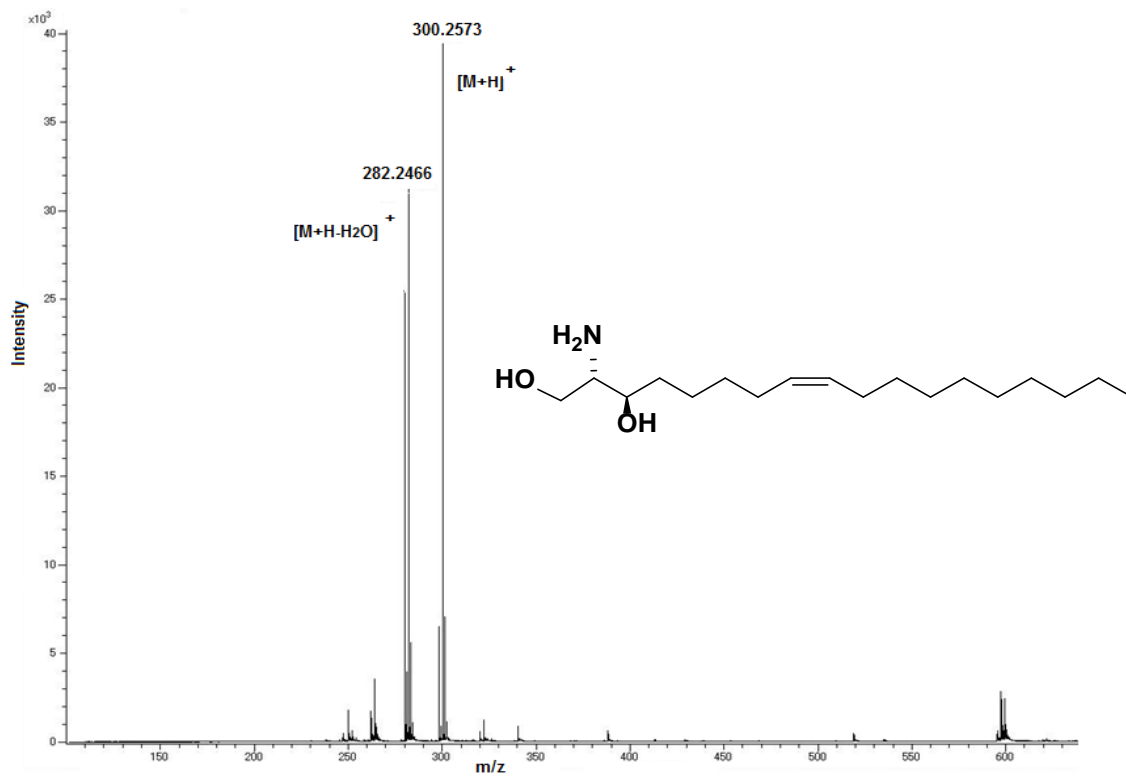
### ESI-mass spectrum of rice sphingoid bases



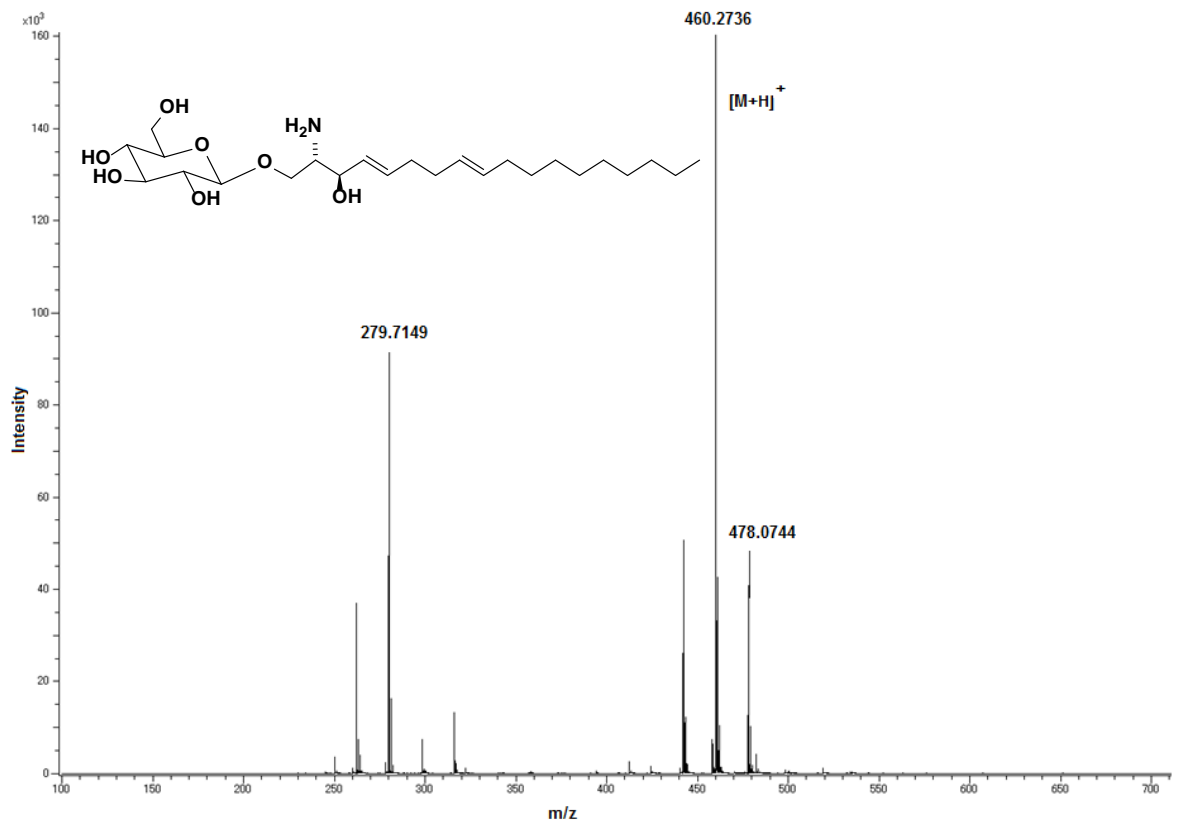
### ESI-Mass spectrum of wheat lyso-GlcCers



### ESI-mass spectrum of wheat spingoid bases



### ESI-mass spectrum of soy lyso-GlcCer



### ESI-mass spectrum of soy spingoid bases

