

524 treated and DMSO control in the allografts. The number of positive staining cells per high power
525 field (400X) was assessed by Photoshop counting tool, and at least 5 fields were counted per
526 trachea. Data shown are the mean \pm SD, n=6.

527

528 **Supplementary Figure 1. Representative immunostaining picture of TGF- β 1⁺ cells in the**
529 **allografts with DMSO controls on day 28.** Brown/dark brown indicate TGF- β 1⁺ cells. All
530 sections were counterstained lightly with hematoxylin for viewing negatively stained cells. The
531 magnifications are indicated in the pictures. The solid arrows in the top panel indicate the
532 amplified area in the bottom panel. The solid arrows in the bottom panel indicate the TGF- β 1
533 positive cells.

534

535 **Supplementary Figure 2. Immunohistochemical staining of B220⁺ and IL-10⁺ B cells in the**
536 **spleens of recipients on day 28 post tracheal transplantation. A** Representative
537 immunostaining picture of B220⁺ and IL-10⁺ B cells in the spleen of DMSO treated recipients.
538 Representative immunostaining picture of B220⁺ and IL-10⁺ B cells in the spleen of DMSO
539 treated recipients. **B** Representative immunostaining picture of B220⁺ and IL-10⁺ B cells in the
540 spleen of Rapa treated recipients. Brown/dark brown indicate B220 or IL-10⁺B cells. All
541 sections were counterstained lightly with hematoxylin for viewing negatively stained cells. The
542 magnifications are indicated in the pictures.

543

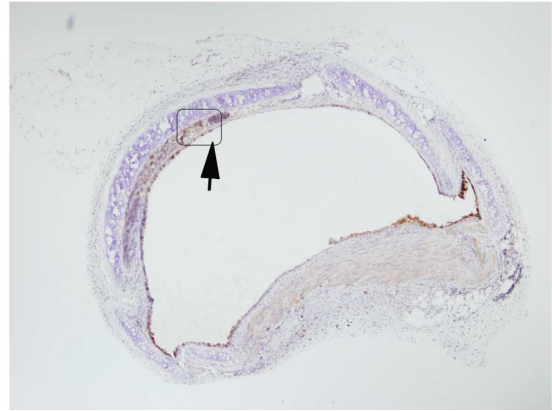
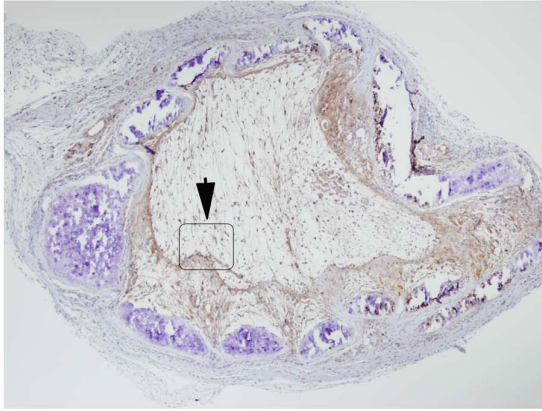
544 **Supplementary Figure 3. The Levels of active TGF- β 1 in the allografts and isografts on day**
545 **28.** Luminex assay was performed using the Bio-Plex 200 system with standard controls. The
546 concentration is pg/ml. Data shown are the mean \pm SD, n=6.

Suppl Fig.1

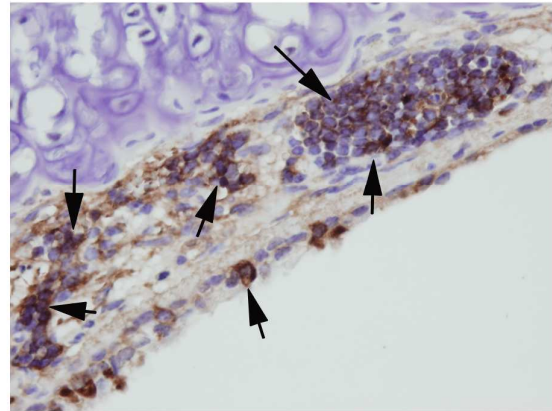
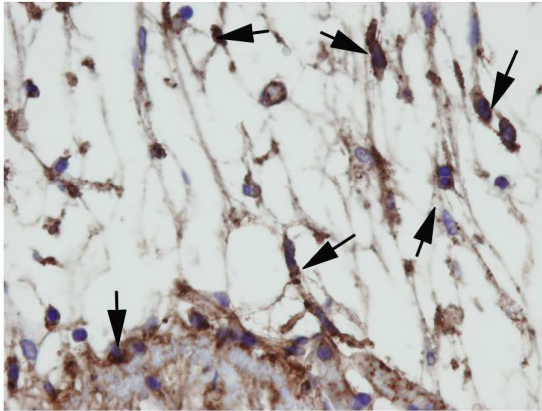
DMSO

Rapa

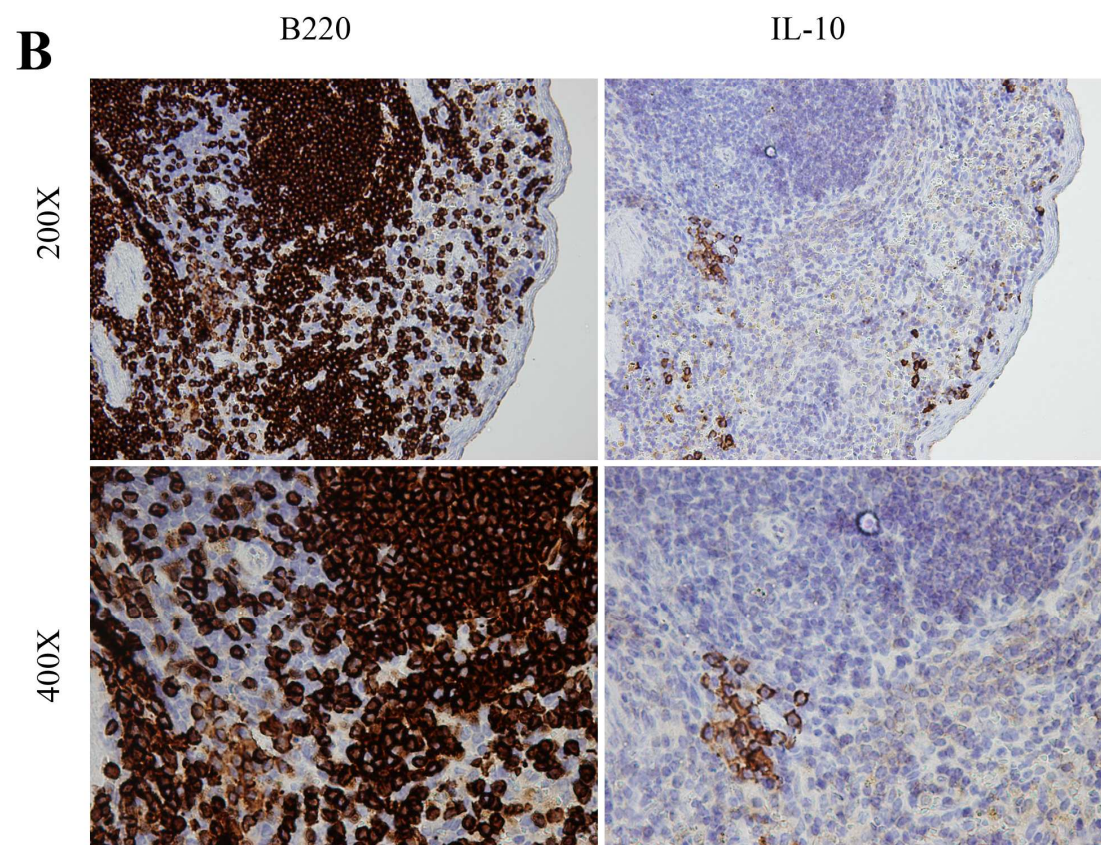
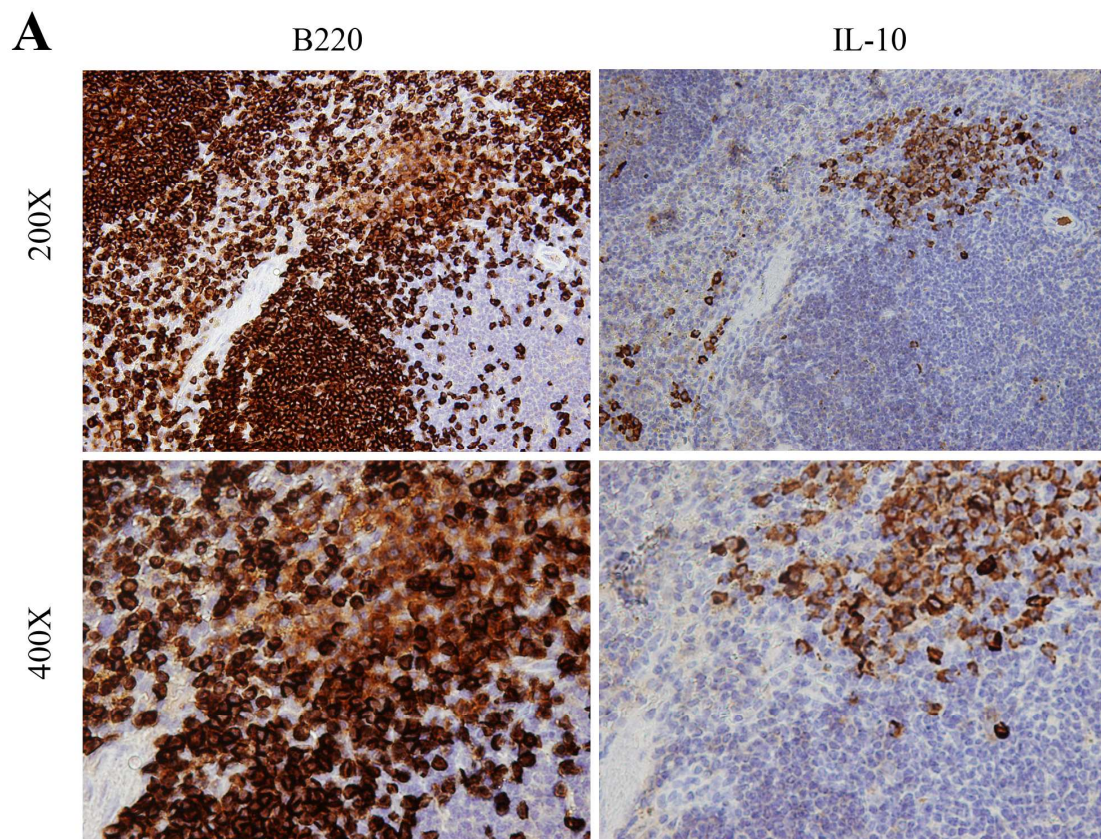
40X



400X



Suppl Fig. 2



Suppl Fig. 3

