

Supporting Information

Supplementary Figures

Figure S1A.

P-gp and Bcrp immunostaining in Fvb triple knockout (TKO) [*Abcb1a*^{-/-}, *Abcb1b*^{-/-}, *Abcg2*^{-/-}] mice (n=3). Retina cryosections were stained for P-gp/*Abcb1a* or Bcrp/*Abcg2* (magenta) along with laminin (yellow) and nuclei DNA (cyan). In all panels laminin staining (yellow) allow to delineate the basal lamina of retinal vessels and the choroidal vessels. (A) Anti-P-gp antibody gave a non-specific intracellular patchy staining in RPE cells/oBRB (arrowheads) and a diffuse background in the sclera (asterisk). However no staining was detected in retinal capillaries. (B) Anti-Bcrp antibody gave only a very faint diffuse staining with no labelling of retinal capillaries. Scale bars: 10 μ m.

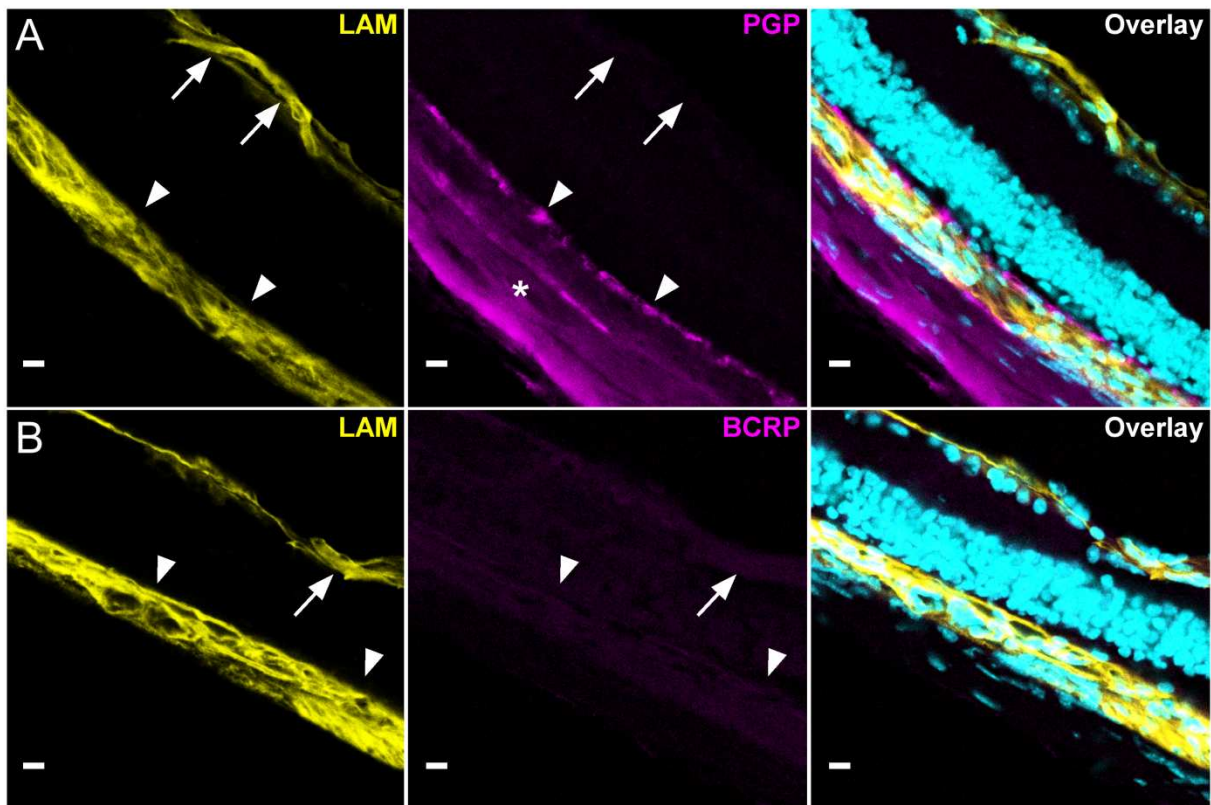


Figure S1B.

Non-specific immunostaining by the secondary antibodies used to detect goat anti-Mrp4 and mouse anti-Mrp1 in Fvb wild-type (WT) mice (n=3). Retina cryosections were stained with AF555-conjugated secondary antibodies (magenta) along with laminin (yellow) and nuclei DNA (cyan). In all panels laminin staining (yellow) allow to delineate the basal lamina of retinal vessels and the choroidal vessels. (A) AF555-conjugated donkey anti-goat (DaG-AF555) gave virtually no staining in the retina. (B,C) AF555-conjugated donkey anti-mouse (DaM-AF555) gives a background staining in the sclera but no detectable staining in the retina. Scale bars: 10 μ m.

