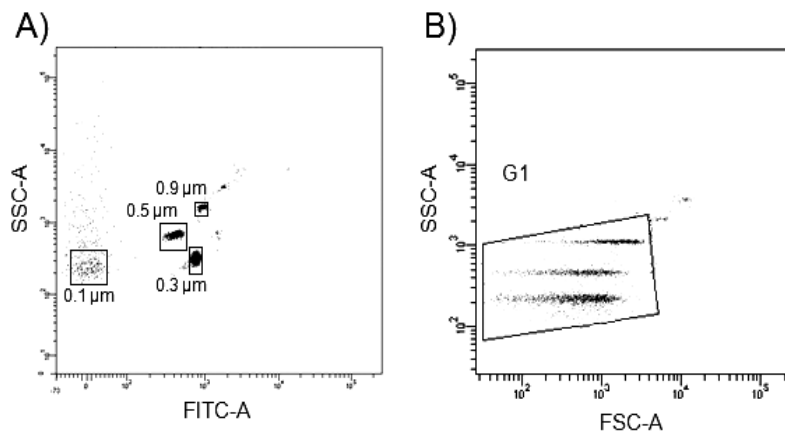


S1 Figure. Gate limits for microparticle analysis with the Megamix-Plus FSC beads for cytometer settings in microparticle analysis.



A) Gate limits were established before analyses using the Megamix-Plus FSC beads for cytometer settings in microparticle analysis (BioCytex, Marseille, France). According to Megamix-Plus FSC beads signal, the lower limit of quantification is $>0.1\mu\text{m}$, as beads of $0.1\mu\text{m}$ were negative for FITC signal. B) Gate limits for microparticle quantification (G1) were set according to beads signal.