

## SUPPORTING INFORMATION

### Readily Accessible Multiplane Microscopy: 3D Tracking the HIV-1 Genome in Living Cells

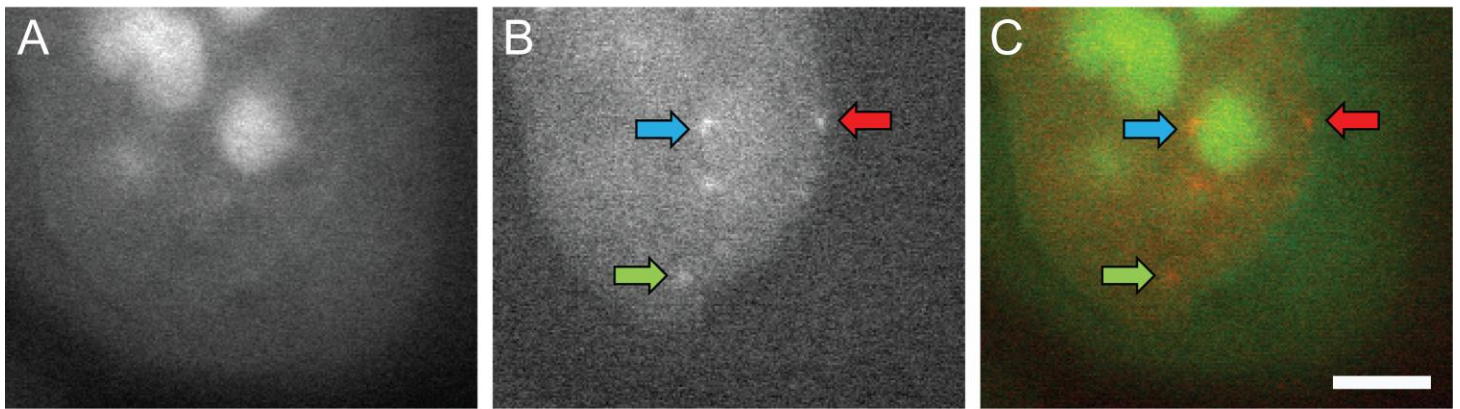
**Authors:** Michelle S. Itano<sup>1</sup>, Marina Bleck<sup>1</sup>, Daniel S. Johnson<sup>1</sup>, Sanford M. Simon<sup>1\*</sup>

**Author affiliations:**

<sup>1</sup>Laboratory of Cellular Biophysics, The Rockefeller University, 1230 York Avenue, New York, NY 10065.

**\*Corresponding author:** Sanford M. Simon (Laboratory of Cellular Biophysics, The Rockefeller University, 1230 York Avenue, New York, NY 10065, (p) 212-327-8130, (f) 212-327-7543, simon@rockefeller.edu)

#### Supplemental Figure 1.



**Supplemental Figure 1.** Assignment of HIV-1 RNAs to subcellular compartments. **(A)** Nucleolar-ID green detection reagent signal and **(B)** HIV-1 genomic RNAs (V1B-MS2) in a HeLa MS2-NLS-mCherry cell. **(C)** Overlay of **(A)** and **(B)**. The blue, green and red arrows indicate RNAs that are associated with the nucleolus, nucleus, and nuclear envelope, respectively. The scale bar represents 5  $\mu\text{m}$ .