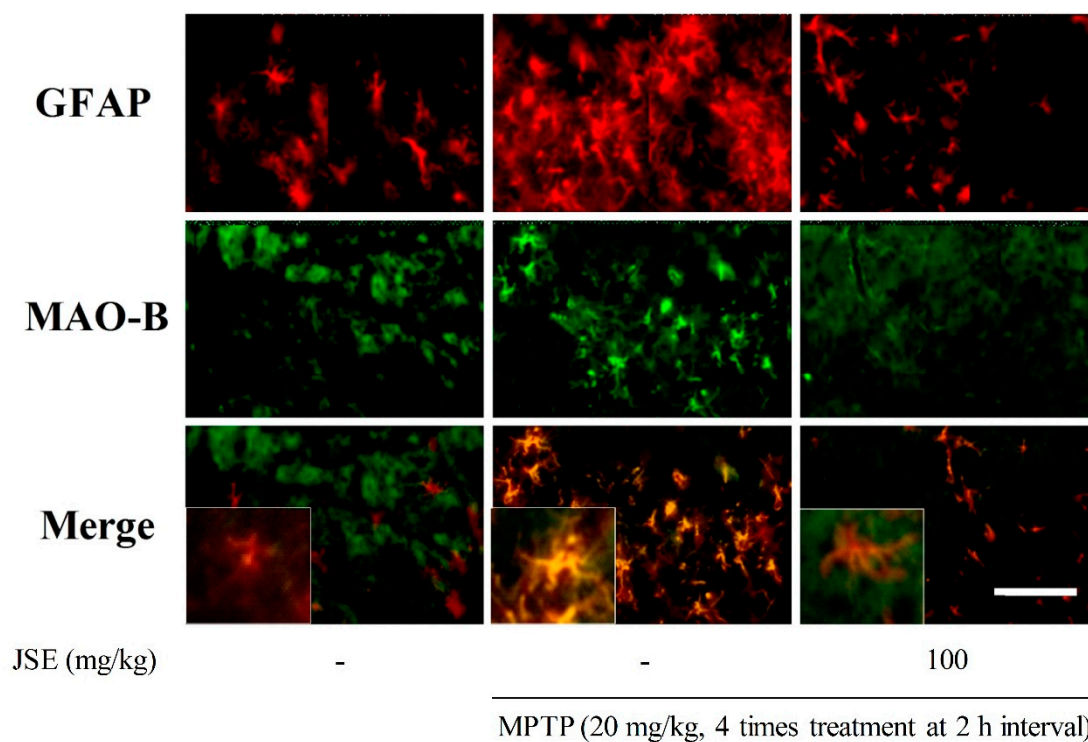


## Supplementary Materials: *In Vitro* and *in Vivo* Neuroprotective Effects of Walnut (*Juglandis Semen*) in Models of Parkinson's Disease

Jin Gyu Choi, Gunhyuk Park, Hyo Geun Kim, Dal-Seok Oh, Hocheol Kim and Myung Sook Oh



**Figure S1.** Effect of JSE on MPTP-induced glial fibrillary acid protein (GFAP) and monoamine oxidase B (MAO-B) inhibition in the substantia nigra pars compacta of mouse brain using GFAP and MAO-B immunohistochemical co-localization. Scale bar = 150  $\mu$ m.