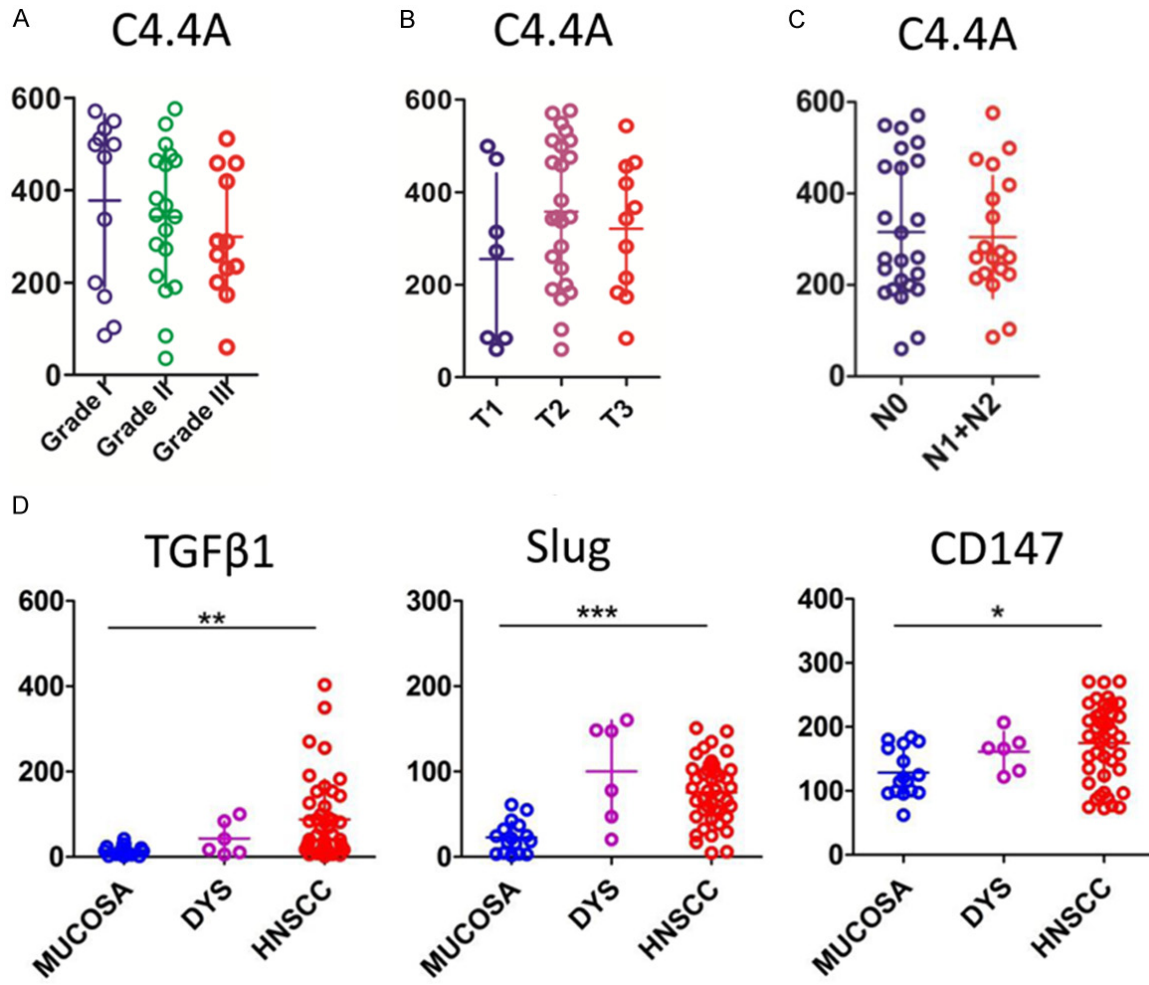
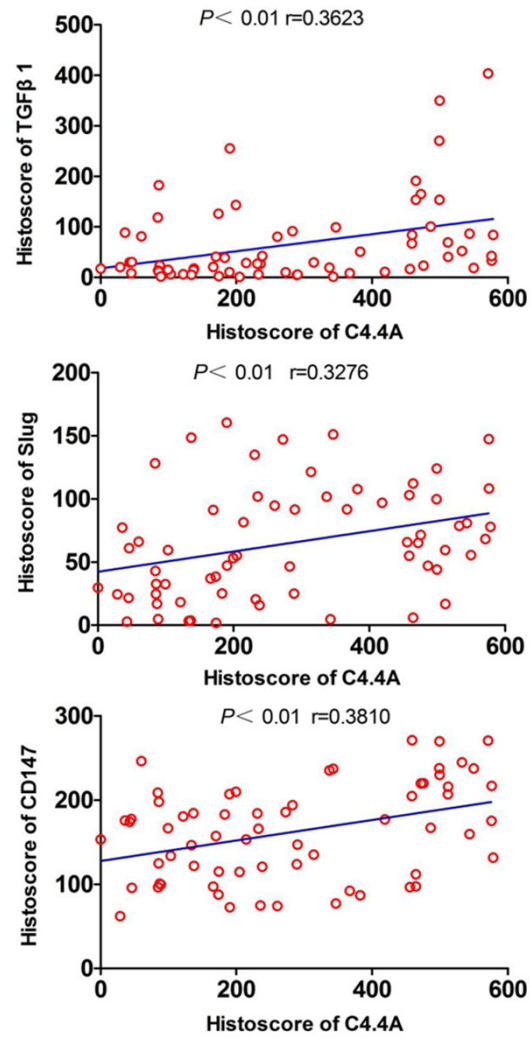


C4.4A correlates with EMT in HNSCC



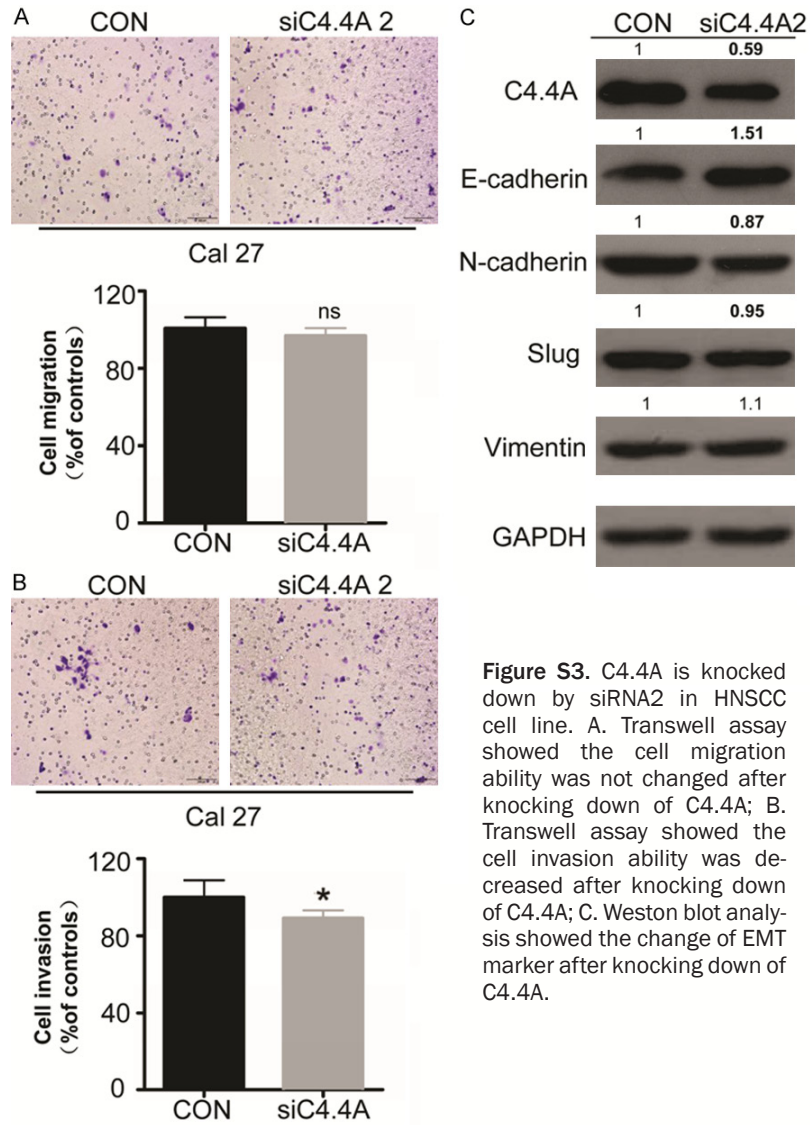
**Figure S1.** C4.4A expression was not correlated with TNM stages in HNSCC tissue array. A. C4.4A expression is not correlated with different pathological grades (I-III) of HNSCC; B. C4.4A expression was not correlated with T category of HNSCC; C. C4.4A expression was not correlated with lymph node metastasis of HNSCC; D. Expression of TGF-β1, Slug, and CD147 was increased in HNSCC when compared with normal oral mucosa (Mean ± SD; \*,  $P < 0.05$ , \*\*,  $P < 0.01$ , \*\*\*,  $P < 0.001$ ,  $t$  test).

## C4.4A correlates with EMT in HNSCC



**Figure S2.** Expression of C4.4A is correlated with expression of TGF- $\beta$ 1, Slug, and CD147. Quantification and correlation of C4.4A with TGF- $\beta$ 1 ( $P < 0.01$ ,  $r = 0.3623$ , one-way ANOVA), Slug ( $P < 0.01$ ,  $r = 0.3276$ , one-way ANOVA), and CD147 ( $P < 0.01$ ,  $r = 0.3810$ , one-way ANOVA) was performed in human HNSCC tissue array.

### C4.4A correlates with EMT in HNSCC



**Figure S3.** C4.4A is knocked down by siRNA2 in HNSCC cell line. A. Transwell assay showed the cell migration ability was not changed after knocking down of C4.4A; B. Transwell assay showed the cell invasion ability was decreased after knocking down of C4.4A; C. Weston blot analysis showed the change of EMT marker after knocking down of C4.4A.