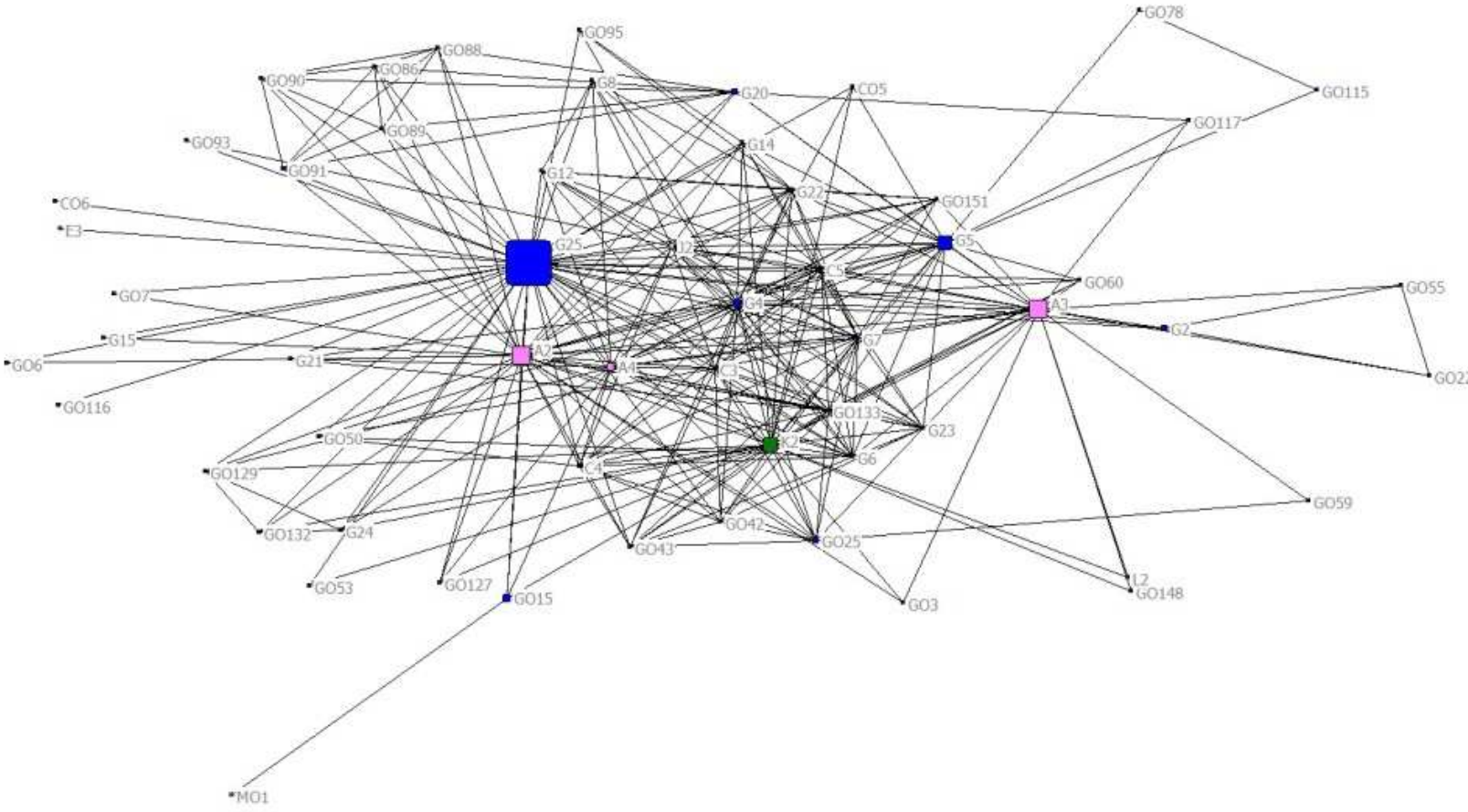


1 **Supplementary Figure 1: Subgroup analysis - By type of intervention (Clinical management [1a]; Biomedical prevention [1b];**
 2 **Behavioral prevention [1c]; and Health services [1d]). Node size is proportional to node betweenness centrality. Outcomes are**
 3 **labeled using their outcome codes.**

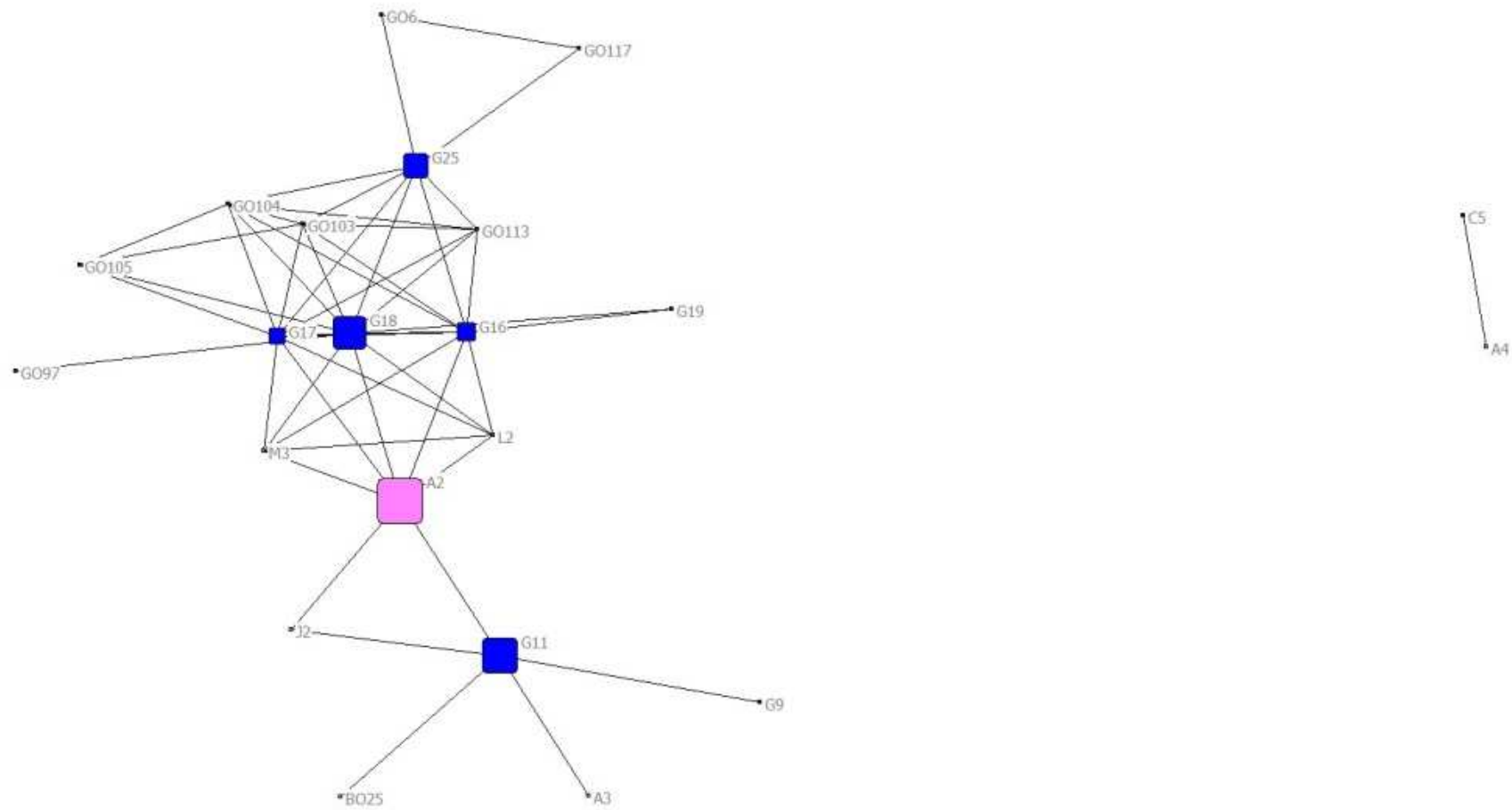
4 **Supplementary Figure 1a – Sub-network of outcomes in reviews assessing clinical management interventions**
 5



6
 7 Alphanumeric codes are provided next to each node to depict categories of each outcome and facilitate comparisons with Table 2, Figure 1,
 8 and Appendix 1. Each alphabet denotes a separate outcome category.

9

1 **Supplementary Figure 1b – Sub-network of outcomes in reviews assessing biomedical prevention interventions**



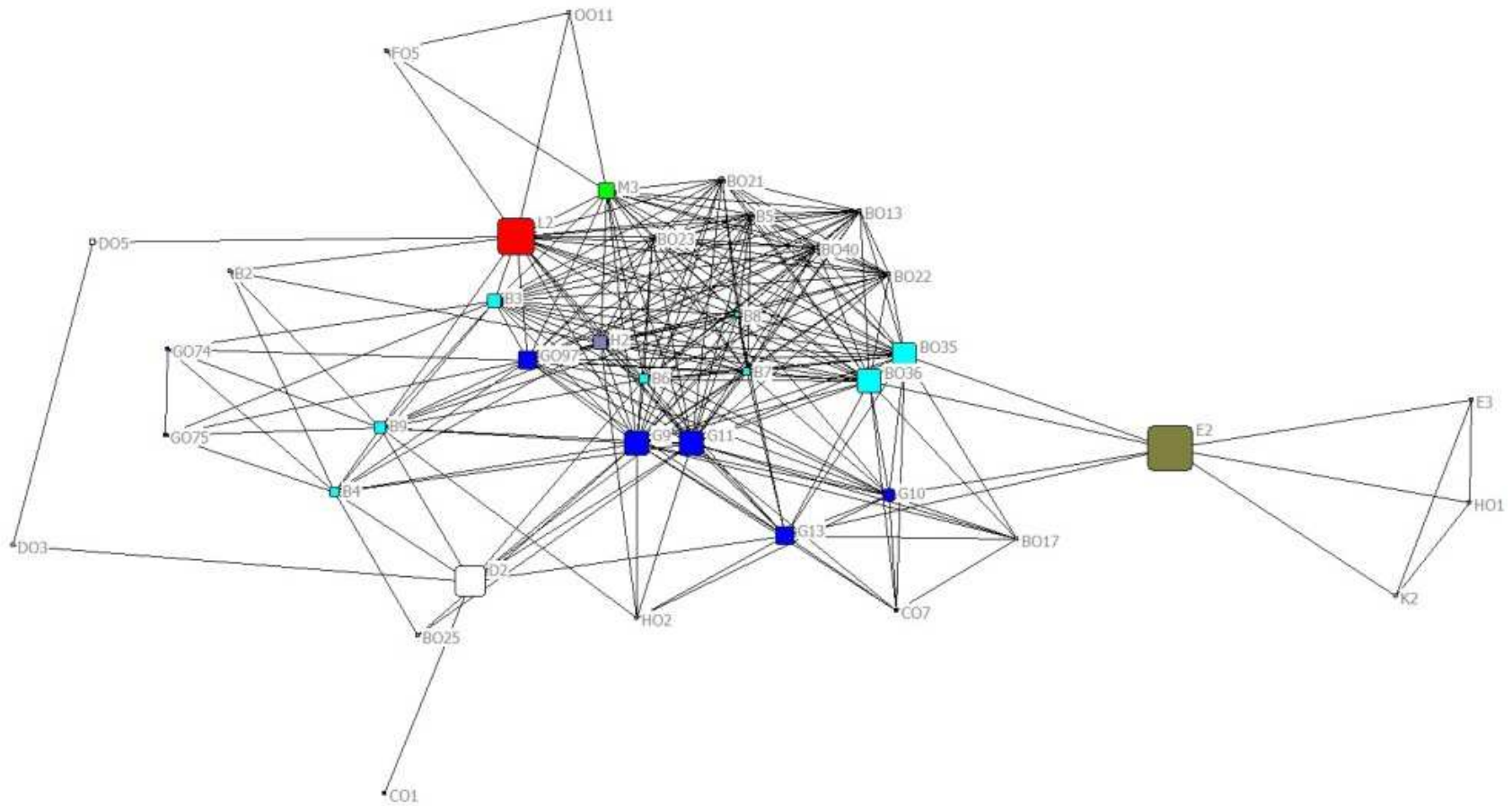
2

3

4 Alphanumeric codes are provided next to each node to depict categories of each outcome and facilitate comparisons with Table 2, Figure 1,
5 and Appendix 1. Each alphabet denotes a separate outcome category.

6

1 **Supplementary Figure 1c – Sub-network of outcomes in reviews assessing behavioral prevention interventions**



2

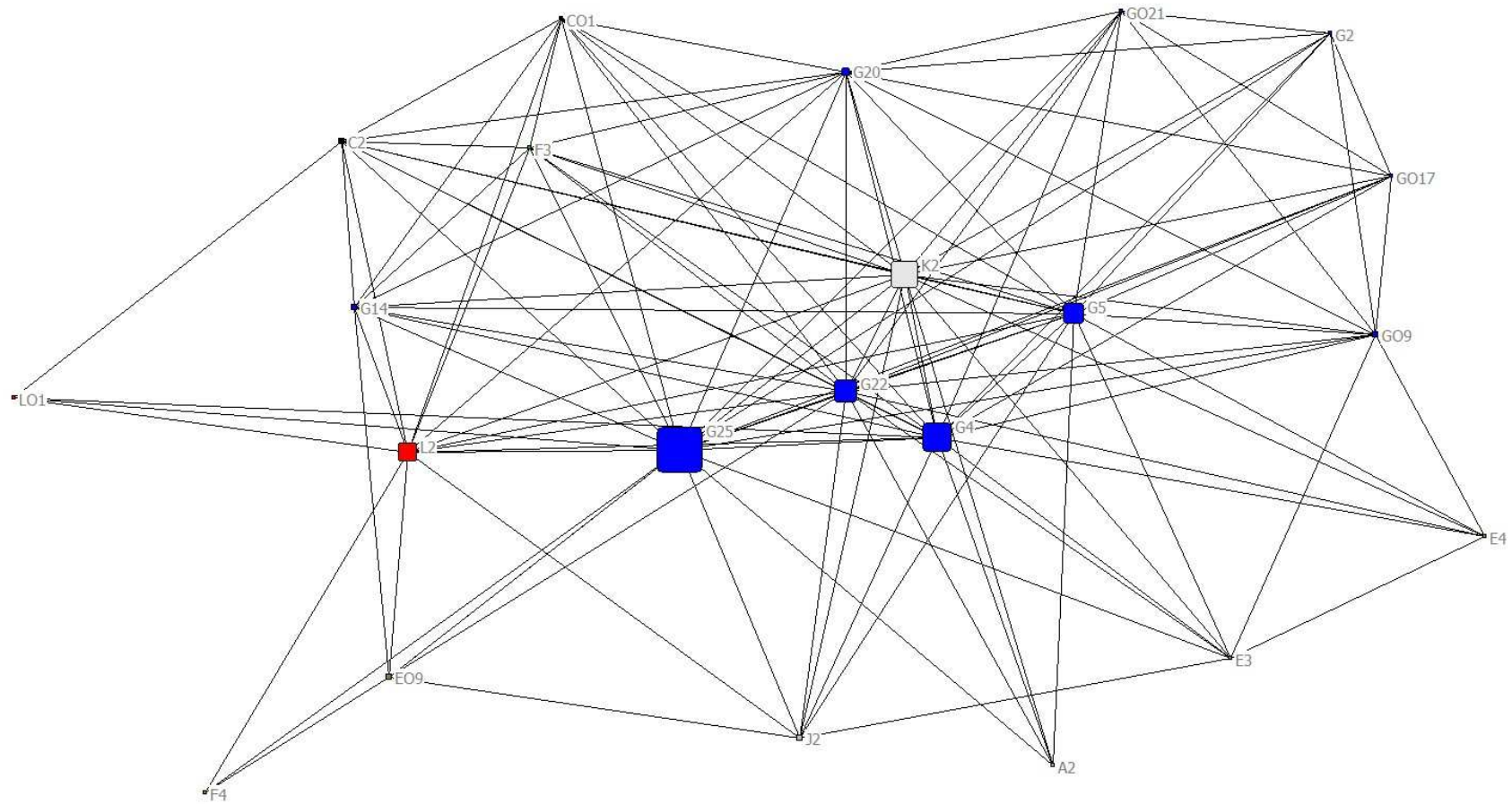
3

4 Alphanumeric codes are provided next to each node to depict categories of each outcome and facilitate comparisons with Table 2, Figure 1,
5 and Appendix 1. Each alphabet denotes a separate outcome category.

6

7

1 **Supplementary Figure 1d – Sub-network of outcomes in reviews assessing health services interventions**



2

3 Alphanumeric codes are provided next to each node to depict categories of each outcome and facilitate comparisons with Table 2, Figure 1,
4 and Appendix 1. Each alphabet denotes a separate outcome category.

5

6

Category (number of contained outcomes)	Sub-category (number of contained outcomes)	Outcomes	Alphanumeric outcome code	Number of systematic reviews named in
Behavioral (n=51)	Drug/Substance use-related (n=7)	<i>Drug/substance use behavior</i> <i>Alcohol risk behavior</i> <i>Tobacco risk behavior</i> <i>Marijuana risk behavior</i> <i>Injection drug/substance use behavior</i> <i>Needle sharing</i> <i>Needle changes</i>	B2 B01 B02 B03 B04 B05 B06	3 2 1 1 3 2 1
	Sexual risk behavior-related (n=40)	<i>Sexual risk behavior</i> <i>Sexual risk behavior - intention</i> <i>Abstinence</i> <i>Abstinence - intention</i> <i>Abstinence - duration</i> <i>Mutual monogamy</i> <i>Incidence of sexual debut</i> <i>Intergenerational sex</i> <i>Exchange of sex for favors (food, money, lodging, etc.)</i> <i>Alcohol use/intoxication before/with sex</i> <i>Type of sexual practice (vaginal, anal (receptive/insertive), oral)</i> <i>Unprotected sex (type unspecified)</i> <i>Unprotected vaginal sex</i> <i>Unprotected anal sex</i> <i>Unprotected oral sex</i> <i>Frequency of sexual encounters (unspecified)</i> <i>Frequency of sexual encounters - consensual</i> <i>Frequency of sexual encounters - nonconsensual</i> <i>Frequency of sexual encounters - vaginal sex</i> <i>Frequency of sexual encounters - anal sex</i> <i>Frequency of sexual encounters - oral sex</i> <i>Frequency of sexual encounters - unprotected sex</i> Partners-related (sub-category only) <i>Partner change</i> <i>Number of sexual partners</i> <i>Multiple sexual partners</i> <i>Sex with seroconcordant partners</i> <i>Sex with non-marital partners</i> <i>Sex with casual partners</i> <i>Sex with commercial sex workers (unspecified)</i> <i>Unprotected sex with commercial sex workers</i> <i>Type of partner (same gender/different gender)</i> <i>Contraception/family planning use/decisions</i> <i>Improved communication with partners about safer sex practices</i> Condoms-related (sub-category only) <i>Condom acquisition</i> <i>Condom use (unspecified)</i> <i>Condom use - male condoms</i> <i>Condom use - female condoms</i> <i>Condom use - intention to use</i> <i>Condom use - negotiation skills</i> <i>Condom use - refusal of intercourse with no condoms</i>	B07 B08 B3 B09 B010 B011 B013 B014 B015 B016 B017 B4 B5 B6 B7 B018 B019 B020 B021 B022 B023 B045 NA B024 B8 B025 B026 B027 B028 B029 B030 B031 B032 B033 NA B034 B9 B035 B036 B038 B039 B040	1 1 5 2 2 1 3 1 3 3 3 8 5 7 6 2 1 1 4 4 4 4 1 NA 1 8 5 1 1 3 1 3 1 NA 1 7 8 8 1 1 3
	Other behavioral outcome domains (n=4)	<i>Bed net use</i> <i>Increased criminal behaviors</i> <i>Breastfeeding behaviors</i> <i>Provider risk behaviors</i>	B041 B042 B043 B044	1 1 2 1
Anti-retroviral prophylaxis/treatment (n=10)	Antiretroviral prophylaxis-related (n=2)	<i>Antiretroviral prophylaxis (unspecified)</i> <i>Pre-exposure prophylaxis (PreP) or prophylaxis use/uptake</i>	CO1 CO2	6 1
	Antiretroviral treatment-related (n=7)	<i>Uptake of antiretroviral treatment</i> <i>Discontinuation of antiretroviral treatment</i> <i>Switching of antiretroviral treatment</i> <i>Resistance to antiretroviral treatment</i> <i>Antiretroviral drug levels</i> <i>Treatment of sexually transmitted infections</i> <i>Sexually transmitted infections - visiting a clinic</i>	C2 C3 C4 C5 C05 C07 C08	8 8 8 16 2 3 1
	Treatment-continuation-related (n=1)	<i>Loss to follow-up/withdrawals</i>	CO6	3

HIV counseling and testing (n=8)	HIV testing-related (n=2)	<i>Referral to HIV testing</i> <i>Uptake of HIV testing</i>	D01 D2	1 8
	Counseling-related (n=4)	<i>HIV test-related counseling (unspecified)</i> <i>Pre-test counseling</i> <i>Post-test counseling</i> <i>Partner counseling</i>	DO7 DO2 DO3 DO4	2 2 3 1
	HIV status-related (n=2)	<i>Patient notification of test results</i> <i>HIV status disclosure</i>	DO5 DO6	3 2
	Mental health/sociological (n=17)	<i>Mental health/psychosocial outcomes (unspecified)</i> <i>Mental health status - confidence</i> <i>Mental health status - well-being</i> <i>Mental health status - self-esteem</i> <i>Mental health status - mood</i> <i>Mental health status - self-efficacy/empowerment for protective behaviors</i> <i>Mental illness</i> <i>Depression/depressive symptoms</i> <i>Anxiety/stress</i> <i>Suicide</i>	EO1 EO2 EO3 EO4 EO5 E2 EO6 E3 E4 EO7	2 1 3 2 2 6 1 10 6 3
	Sociological (n=7)	<i>Family/friends support</i> <i>Negotiation skills</i> <i>Dependence/adverse sociological effects</i> <i>Stigma (unspecified)</i> <i>HIV-related stigma</i> <i>Coping strategies for dealing with HIV-related stigma</i> <i>Tolerance towards persons living with HIV/AIDS</i>	EO12 EO13 EO14 EO9 EO10 EO11 EO8	3 1 1 6 1 1 1
Clinical/biological (n=160)	Clinical symptoms (n=10)	<i>Appetite</i> <i>Pain</i> <i>Duration of pain</i> <i>Nausea</i> <i>Diarrhea</i> <i>Duration of diarrhea</i> <i>Fatigue</i> <i>Breathlessness/dyspnea</i> <i>Stiffness</i> <i>Symptom resolution</i>	GO2 GO3 GO4 GO5 GO6 GO7 GO9 GO10 GO11 GO15	2 5 1 1 5 2 3 2 1 6
	Clinical signs (n=7)	<i>Clinical lipodystrophy</i> <i>Heart rate</i> <i>Dehydration</i> <i>Oral ulcer healing</i> <i>Oral ulcer recurrence</i> <i>Strength</i> <i>Stamina</i>	GO25 GO41 GO8 GO13 GO14 GO34 GO36	4 2 1 1 1 2 1
	Anthropometric measures (n=19)	<i>Anthropometric measures (unspecified)</i> <i>Weight</i> <i>Height</i> <i>Body mass index (BMI)</i> <i>Weight-for-height</i> <i>Linear growth</i> <i>Body composition</i> <i>Lean body mass</i> <i>Percentage of body fat</i> <i>Fat free mass</i> <i>Girth</i> <i>Body cell mass</i> <i>Leg subcutaneous fat area</i> <i>Abdominal visceral adipose tissue</i> <i>Waist circumference</i> <i>Hip circumference</i> <i>Waist-to-hip ratio</i> <i>Skin fold thickness</i> <i>Subcutaneous/cross-sectional muscle area</i>	GO16 G2 GO152 GO17 GO18 GO19 GO20 GO21 GO22 GO23 GO24 GO26 GO27 GO28 GO29 GO30 GO31 GO32 GO33	2 6 1 4 1 2 2 5 3 1 1 1 1 1 1 1 1 3 2

Laboratory measures (n=28)	Blood/serum measures (sub-category only)	NA	
	Hematologic indicators	G052 1	
	Hemoglobin	G053 2	
	Hematocrit	G054 1	
	Glucose	G055 2	
	Insulin	G0149 1	
	Albumin/Pre-albumin	G056 1	
	Cholesterol	G057 1	
	Total cholesterol	G058 1	
	LDL cholesterol	G0147 1	
	Triglycerides	G059 3	
	White blood cells/CBC/immunologic outcomes	G060 3	
	T-cell/immune cells	G3 3	
	CD4 count	G4 42	
	HIV-specific CD4 count	G061 1	
	CD4 % of total lymphocytes	G062 2	
	CD8 count	G063 1	
	HIV-specific CD8 count	G064 1	
	CD4:CD8 ratio	G065 1	
	Virologic outcomes	G0144 1	
	Viral load	G5 24	
	HIV RNA	G6 10	
	Virologic success/suppression/undetectable viral load	G7 16	
	Clinical/treatment/virologic failure	G0151 6	
	Virologic response to antiretroviral/HAART treatment	G8 4	
	Cortisol	G069 1	
	Stool measures (sub-category only)	NA	
	Stool culture	G0150 1	
	Other laboratory measures (sub-category only)	NA	
	Bone mineral density	G037 1	
	Oxygen consumption	G040 2	
	Clinical diagnoses (n=51)	Cardiovascular diagnoses (sub-category only)	NA
		Coronary artery disease (unspecified)	G042 3
Myocardial infarction		G043 3	
Angina		G045 1	
Cerebrovascular accident/stroke		G046 1	
Infections-related diagnoses (sub-category only)		NA	
Sexually transmitted infections - visiting a clinic		G074 4	
Acquisition/incidence of sexually transmitted infections		G9 16	
Prevalence of sexually transmitted infections		G10 8	
HIV infection		G075 3	
Acquisition/incidence of HIV (seroconversion)		G11 26	
Incidence of HIV with viral isolates matched to index patient		G076 1	
Transmission of HIV		G12 6	
Prevalence of HIV		G13 9	
HIV viral shedding		G078 3	
HSV infection (category only)		NA	
Incidence of HSV		G079 1	
HSV viral shedding		G080 1	
Incidence of HPV		G081 1	
Incidence of influenza		G082 1	
Incidence of hepatitis B		G083 2	
Incidence of measles		G084 1	
Incidence of other vaginal infections (e.g.bacterial vaginosis, trachomonas, candidiasis)		G085 3	
Incidence of other bacterial infections		G086 2	
Incidence of opportunistic infections (unspecified)		G14 11	
Incidence of toxoplasmosis		G088 2	
Incidence of parasitic infections excluding toxoplasmosis		G089 3	
Incidence of pneumocystis carinii pneumonia		G090 2	
Incidence of tuberculosis		G15 5	
Incidence of drug-resistant tuberculosis		G092 1	
Tuberculosis negative-cultures/smears		G093 2	
Incidence of fungal infections excluding pneumocystis carinii pneumonia		G091 2	
Incidence of disseminated mycobacterium avium complex		G094 1	
Cryptococcal meningitis-free cultures		G0146 1	
Pneumonia diagnoses (sub-category only)		NA	
Pneumococcal pneumonia		G0120 1	
Pneumocystis jiroveci pneumonia		G0121 1	
Toxoplasma pneumonia		G0122 1	
Invasive cryptococcal disease (pneumonia/meningitis)		G0123 1	
Cancer/malignancy diagnoses (sub-category only)		NA	
Opportunistic cancers/malignancies		G095 4	
Cervical intraepithelial neoplasia (CIN)		G096 1	
Primary liver cell carcinomas		G0126 1	
Tumor response		G0129 5	
Tumor recurrence		G0130 1	
Hepato-biliary diagnoses (sub-category only)		NA	
Liver/hepatic failure		G0125 1	
Liver cirrhosis		G0124 1	
Neurologic disease (sub-unspecified)		G0127 3	
Post-herpetic neuralgia		G0128 1	
Bone-related diagnoses (sub-category only)		NA	
Fractures		G012 1	
Osteoporosis		G038 1	
Osteopenia		G039 1	
AIDS-related diagnoses (sub-category only)		NA	
Progression to AIDS		G22 20	
AIDS-defining illness/event		G23 16	
Other clinical diagnoses (sub-category only)		NA	
Acute retroviral syndrome		G049 1	
Immune Reconstitution Inflammatory Syndrome (IRIS)		G050 2	

Pregnancy, postpartum, and neonatal (n=15)	Pregnancy-related outcomes (sub-category only)	NA	
	<i>Pregnancy</i>	GO97	8
	<i>Pregnancy outcomes</i>	GO99	1
	<i>Information on prevention of mother to child transmission (PMTCT)</i>	GO100	1
	<i>Safe delivery, either at home or hospital</i>	GO101	1
	<i>Hospital deliveries among women living with HIV</i>	GO102	1
	<i>Premature deliveries</i>	GO103	5
	<i>Stillbirth</i>	GO104	4
	Postpartum and neonatal outcomes (sub-category only)	NA	
	Measures of postpartum morbidity	G16	4
	Measures of neonatal/infant/child morbidity	G19	3
	<i>Low birth weight</i>	GO105	4
	<i>Infant feeding counseling</i>	GO107	1
	<i>Mother-to-child transmission of HIV, including HIV status in offspring</i>	G18	12
<i>Infant received HIV test</i>	GO111	1	
<i>Neonatal sepsis</i>	GO112	1	
<i>Neonatal intensive care unit (NICU) admissions</i>	GO113	2	
Survival-related (n=4)	<i>Survival/overall survival</i>	G24	8
	<i>Infant/child survival</i>	GO154	1
	<i>HIV-free survival</i>	GO131	2
	<i>Cancer-free survival</i>	GO132	4
Death-related (n=13)	<i>Death/mortality/all-cause mortality</i>	G25	68
	<i>Neonatal/infant mortality</i>	G17	5
	<i>HIV/AIDS-related mortality</i>	GO133	13
	<i>HPV-related mortality</i>	GO134	1
	<i>Influenza-related mortality</i>	GO135	1
	<i>Hepatitis B-related mortality</i>	GO136	1
	<i>Pneumococcal-related mortality</i>	GO137	1
	<i>Pneumocystis jiroveci-related mortality</i>	GO138	1
	<i>Toxoplasma pneumonia-related mortality</i>	GO139	1
	<i>Toxoplasma encephalitis-related mortality</i>	GO140	1
	<i>Tuberculosis-related mortality</i>	GO141	1
	<i>Kaposi sarcoma-related mortality</i>	GO142	1
	<i>Diarrhea-related mortality</i>	GO143	1
Other clinical/biological outcome domains (n=13)	<i>Dietary intake</i>	GO1	1
	<i>Blood transfusion</i>	GO70	2
	<i>Packed red cell transfusion</i>	GO71	1
	<i>Hospitalization</i>	G20	12
	<i>Duration of hospitalization</i>	GO114	3
	<i>Functional status/disability</i>	GO115	4
	<i>Activities of daily living</i>	GO153	1
	<i>Cognitive function</i>	GO116	2
	<i>Disease progression (unspecified)</i>	G21	5
	<i>Vaccine failure</i>	GO145	1
	<i>Duration of skin lesions</i>	GO148	2
	<i>Respiratory/lung function</i>	GO117	5
	<i>Need for mechanical ventilation</i>	GO118	1

Health services access and uptake-related (n=9)	Health services access-related (n=4)	Access to/coverage of services	F2	3
		Access to/coverage of services for disadvantaged patients/populations	FO1	1
		Barriers to services	FO2	2
		Ease and timeliness of access to services	FO5	3
Health services uptake-related (n=3)	Health services uptake-related (n=3)	Utilization of healthcare	F3	5
		Quality of healthcare	F4	3
		Impact of male participation on health services	FO6	1
Other health services outcome domains	Other health services outcome domains	Retention in overall care	F5	3
		Referral to other services	FO3	2
Knowledge-related (n=8)	Knowledge-related (n=8)	Knowledge (unspecified)	HO1	3
		Sexually transmitted infections-related knowledge	HO2	3
		Knowledge of providers regarding sexually transmitted infections	HO3	1
		HIV-related knowledge	H2	8
		Risk behavior/prevention-related knowledge	HO4	1
		Sexual risk behavior-related knowledge	HO5	1
		Condom use-related knowledge	HO6	1
		HIV status knowledge	HO7	1
Attitudes-related (n=5)	Attitudes-related (n=5)	Attitudes (unspecified)	IO1	2
		Risk behavior/prevention-related attitudes	IO2	2
		Condom use-related attitudes	IO3	1
		Sexual risk behavior-related attitudes	IO4	1
		Provider attitudes	IO5	1
Adherence-related (n=1)	Adherence-related (n=1)	Adherence	J2	26
Quality-of-life-related (n=1)	Quality-of-life-related (n=1)	Quality-of-life	K2	39
Economic (n=3)	Economic (n=3)	Cost/cost-effectiveness for patients	L2	20
		Cost/cost-effectiveness for providers	LO1	3
		Economic empowerment/improvement in economic well-being for patients	LO2	1
Preference/satisfaction (n=5)	Patient or partner preference-related (n=3)	Patient preferences	MO1	3
		Patient satisfaction with intervention	M2	4
		Patient intervention acceptability	M3	10
	Provider preference-related (n=2)	Provider preferences	MO3	1
Provider satisfaction	MO4	2		
Adverse effects-related (n=5)	Adverse effects-related (n=5)	Adverse events/complications (unspecified)	A2	50
		Adverse events/complications (specified)	A3	17
		Major/severe/serious adverse events	A4	25
		Allergic reactions to latex	AO3	1
		Harm for false positives	AO4	1
Other outcomes (n=11)	Other outcome domains (n=11)	Socioeconomic status	O2	1
		Employment/employment loss	OO3	1
		School attendance	OO4	1
		Illness intrusiveness	OO6	2
		Violence - physical/psychological/sexual	OO7	1
		Domestic violence/intimate partner violence	OO8	2
		Marital conflict	OO9	1
		Breach of confidentiality	OO10	2
		Misinterpretation of information	OO11	3
		Diagnostic accuracy	OO15	1
		Education	OO17	1