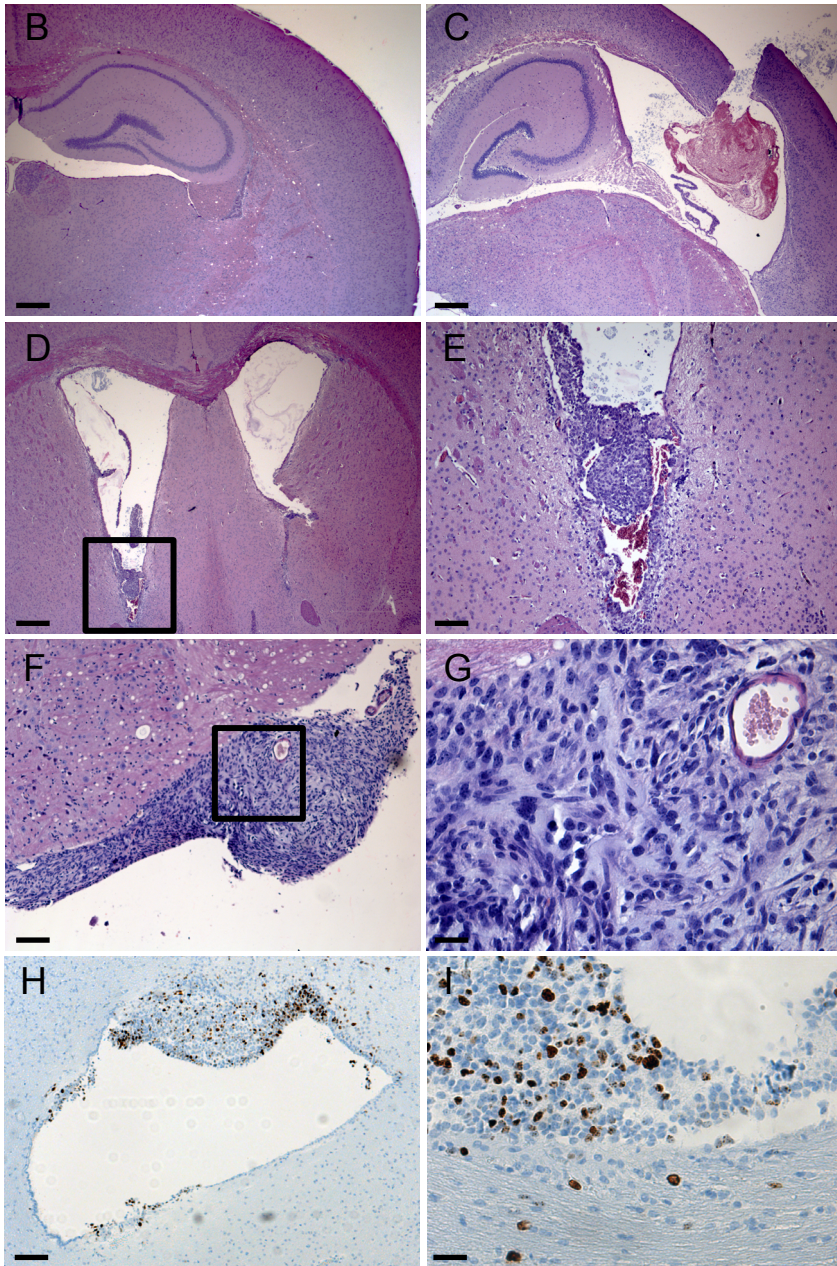
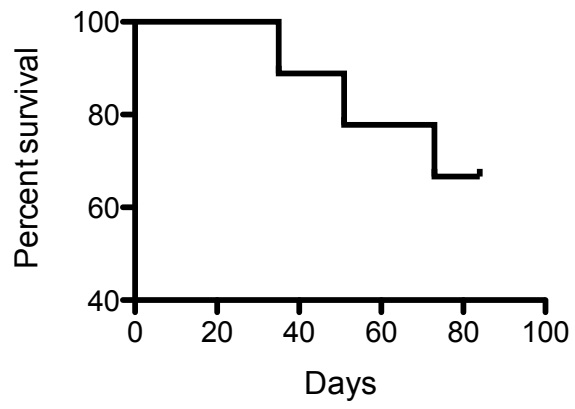


A



**Figure S5. Induction of leptomeningeal lesions in the cerebral cortex of Pax3-Tv-a mice.** (A) Kaplan-Meier survival curve of Ptv-a;p53<sup>fl/fl</sup> mice injected with RCAS-PDGF-B and RCAS-Cre into the cerebral cortex at postnatal day 3, n=9. (B-C) H&E staining of a normal lateral ventricle (B) and an enlarged ventricle containing blood due to hydrocephalus (C), 2.5x magnification. (D-E) Small lesion lining the lateral ventricle (D), 2.5x, black box enlarged to 10x in (E). (F-G) Small lesion lining the lateral ventricle, 10x, black box enlarged to 40x in (G). (H-I) Ki67 staining of small lesions lining the lateral ventricle, 10x (H) and 40x (I). Scale bar for 2.5x is 400  $\mu$ m, 10x is 100  $\mu$ m, 40x is 25  $\mu$ m.