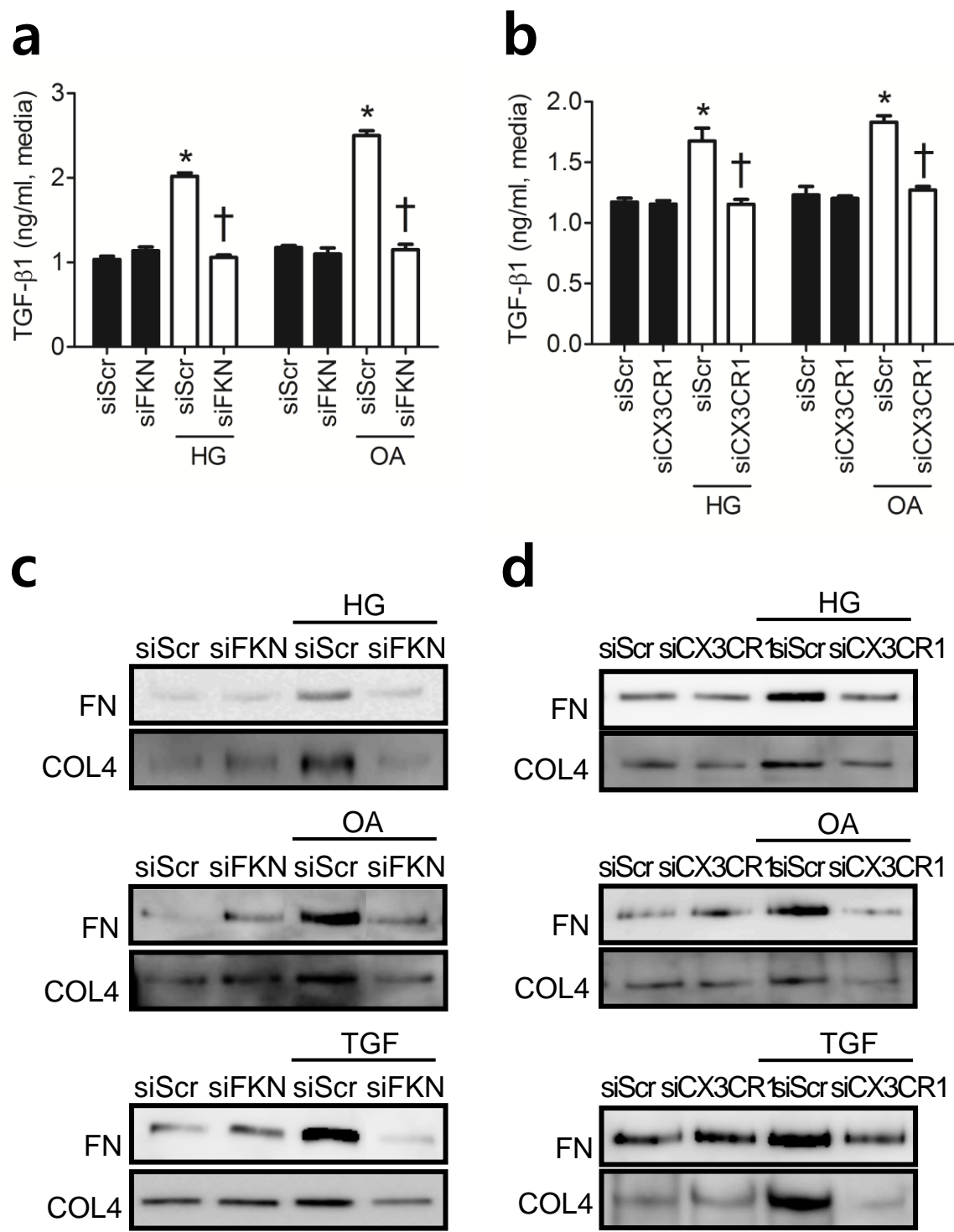


ESM Figure 5. FKN/CX3CR1 inhibited diabetes-induced ECM synthesis in MMCs. TGF- β 1 (a, b), FN, and COL4 (c, d) protein secretion were assessed by ELISA or Western blot analysis. Data are mean \pm SE or representative Western blots of four experiments. * $p < 0.05$ vs. siScr without other treatments, † $p < 0.05$ vs. siScr with HG or OA; siScr, negative siRNA; siFKN, *Fkn* siRNA; siCX3CR1, *Cx3cr1* siRNA; HG, 30 mmol/l D-glucose; OA, 100 μ mol/l oleic acid; TGF, 10 ng/ml transforming growth factor- β 1.



Song et al. ESM Figure 5.