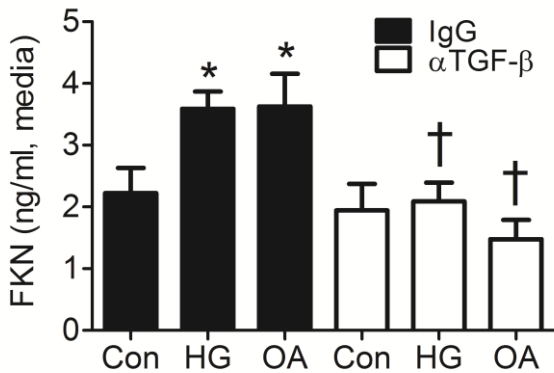
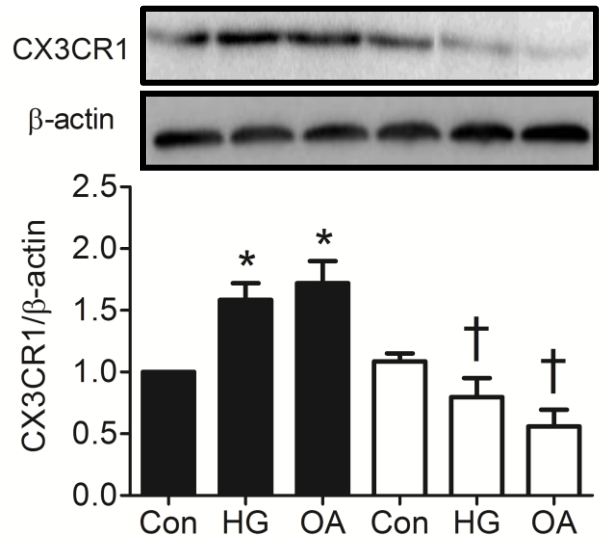


ESM Figure 6. Inhibition of diabetic stimuli-induced FKN/CX3CR1 protein production and FKN-induced ECM secretion in MMCs treated with TGF- β neutralizing antibody. FKN (a) and CX3CR1 (b) protein levels were measured in MMCs exposed to HG and OA with or without a TGF- β neutralizing antibody. ECM markers such as FN (c) and COL4 (d) protein production were assessed in MMCs incubated with a TGF- β neutralizing antibody before stimulation with FKN. Data are mean \pm SE or representative Western blots of four experiments. * $p < 0.05$ vs. Con, † $p < 0.05$ vs. HG, OA or FKN; Con, control; HG, 30 mmol/l D-glucose; OA, 100 μ mol/l oleic acid; α TGF- β , 5 μ g/ml anti-TGF- β neutralizing antibody; FKN, 50 ng/ml fractalkine.

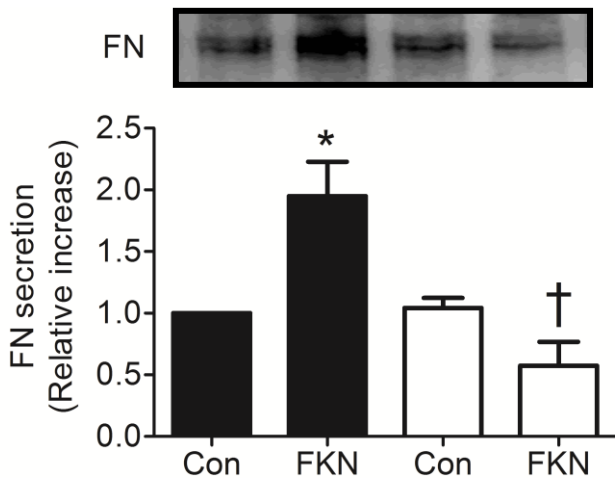
a



b



c



d

