

fluorescence intensity) of reactivity to the citrullinated peptide minus the value obtained from native peptide (corrected value).

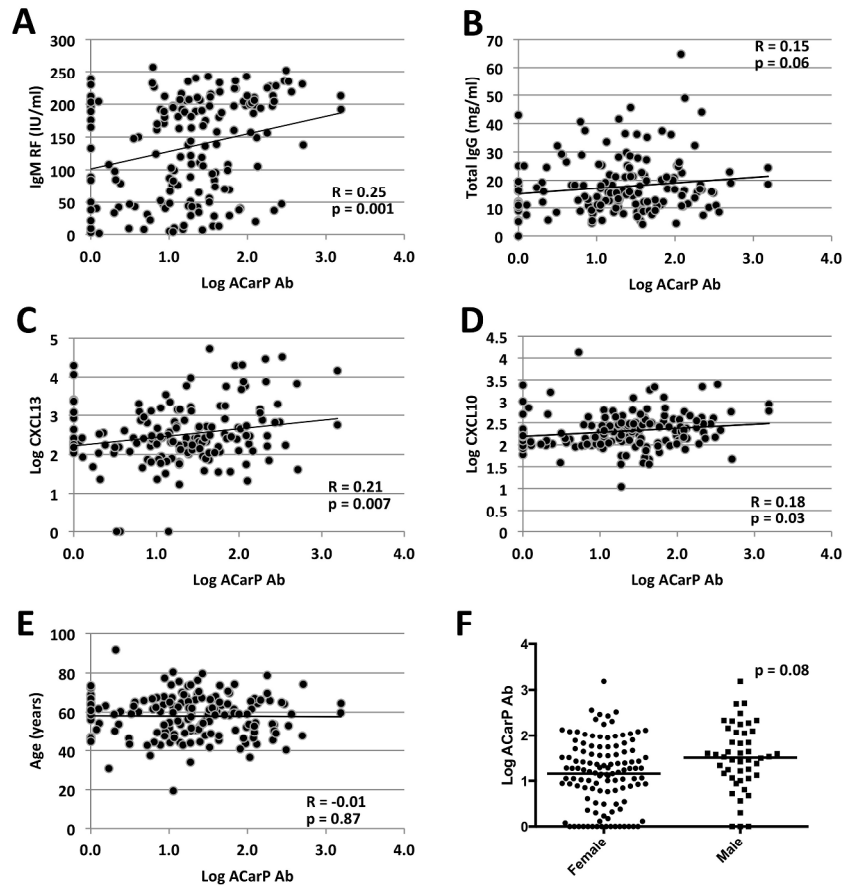
Supplementary Figure 1. Among seropositive RA patients in the Dartmouth cohort, ACarP reactivity shows a relationship with (A) IgM RF, (C) CXCL13, and (D) CXCL10, but not with (B) total IgG, (E) age, or (F) gender.

Supplementary Figure 2. Among seropositive RA patients in the Sherbrooke cohort, a relationship to ACarP reactivity was not identified with (A) IgM RF, (B) total IgG, (C) CXCL13, (D) CXCL10, (E) age, or (F) gender.

Supplementary Figure 3. Among seropositive RA patients in the Sherbrooke cohort, there was no relationship identified between ACarP reactivity and (A) DAS28-CRP, (B) CRP, or (C) baseline erosions. D. ACarP reactivity is more prevalent in current and former smokers than non-smokers.

Supplementary Figure 4. Combining the Dartmouth and Sherbrooke cohorts shows a preserved relationship between ACarP reactivity and (A) anti-CCP titers and (B) IgM RF levels.

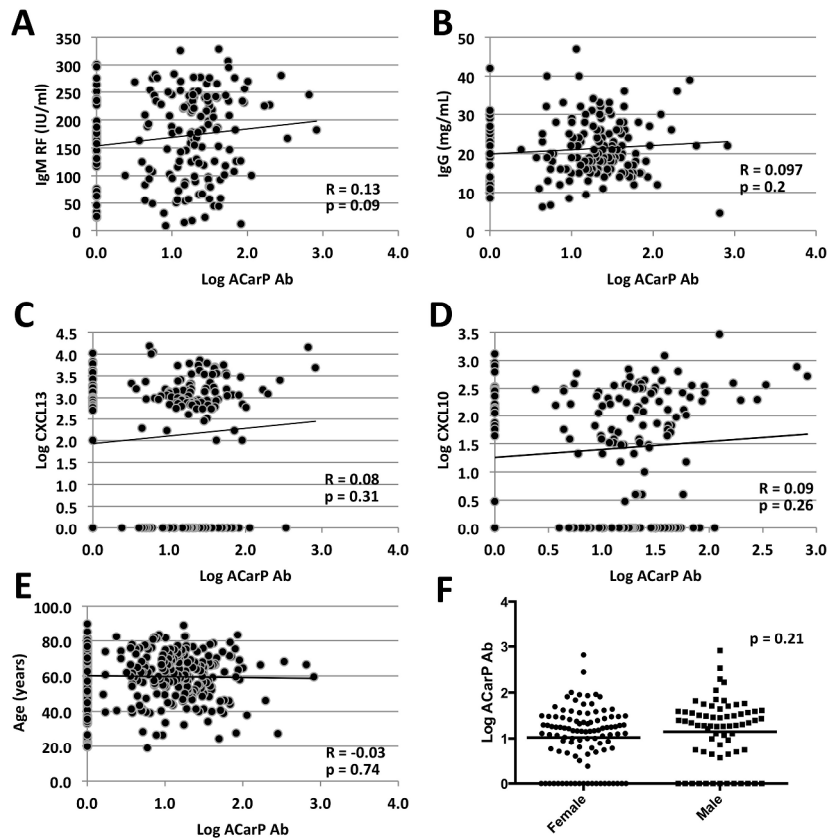
Supplementary Figure 1



Supplementary Figure 1. Among seropositive RA patients in the Dartmouth cohort, ACarP reactivity shows a relationship with (A) IgM RF, (C) CXCL13, and (D) CXCL10, but not with (B) total IgG, (E) age, or (F) gender.

114x152mm (1200 x 1200 DPI)

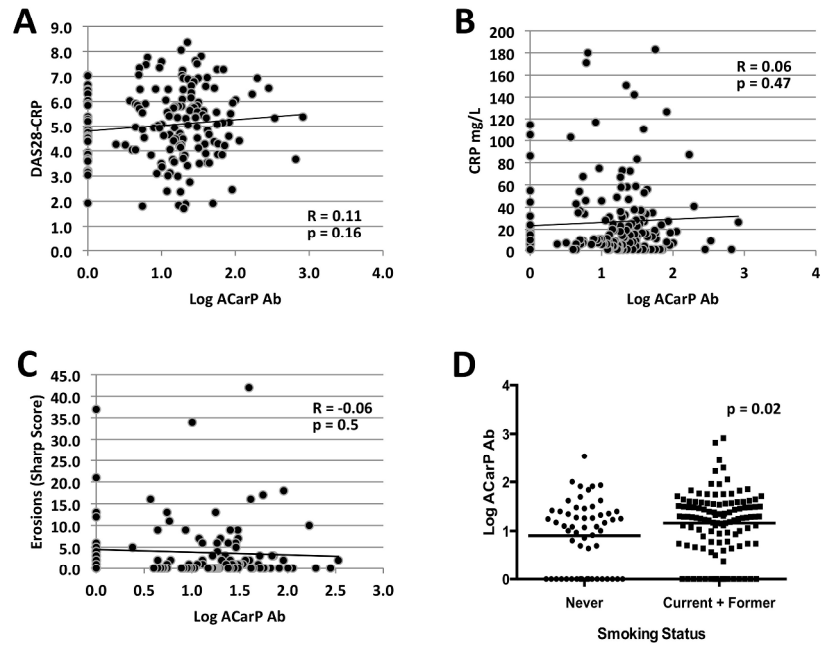
Supplementary Figure 2



Supplementary Figure 2. Among seropositive RA patients in the Sherbrooke cohort, a relationship to ACarP reactivity was not identified with (A) IgM RF, (B) total IgG, (C) CXCL13, (D) CXCL10, (E) age, or (F) gender.

114x152mm (1200 x 1200 DPI)

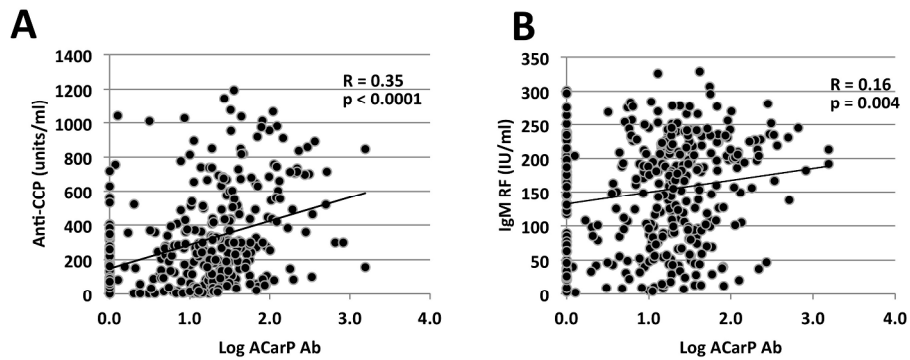
Supplementary Figure 3



Supplementary Figure 3. Among seropositive RA patients in the Sherbrooke cohort, there was no relationship identified between ACP reactivity and (A) DAS28-CRP, (B) CRP, or (C) baseline erosions. D. ACP reactivity is more prevalent in current and former smokers than non-smokers.

114x152mm (1200 x 1200 DPI)

Supplementary Figure 4



Supplementary Figure 4. Combining the Dartmouth and Sherbrooke cohorts shows a preserved relationship between ACarP reactivity and (A) anti-CCP titers and (B) IgM RF levels.

162x107mm (1200 x 1200 DPI)