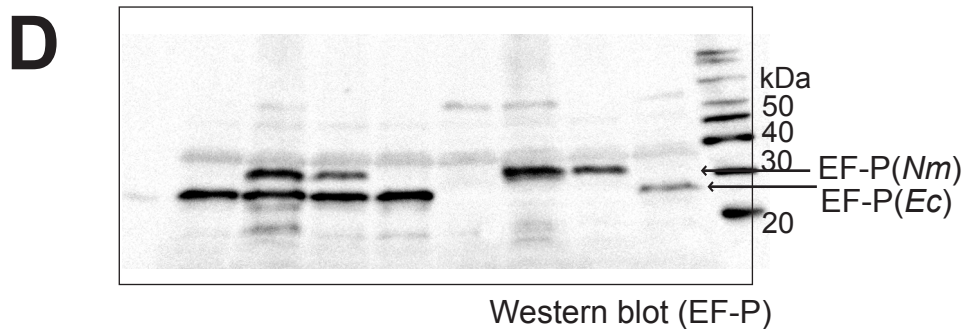
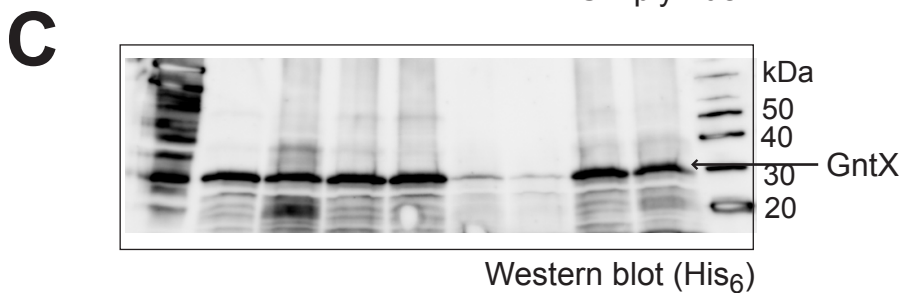
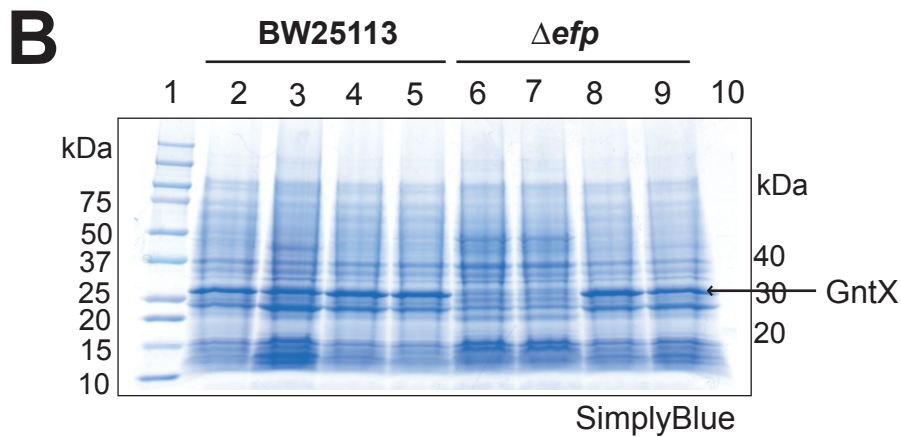


Yanagisawa *et al.*, Fig.S7

A *E. coli* GntX (Calcd.mass 27731)

MRGSHHHHHHTDPALRP

MLTVPGLCWLCRMPLALGHWGICSVCSRATR
TDKTLCPQCGLPATHSHLPCGRCLQKPPPWQ
RLVTVADYAPPLSPLIHQLKFSRRSEIASALSRL
LLEVLHARRTTGLQLPDRIVSVPLWQRRHWR
RGFNQSDLLCQPLSRWLHCQWDSEAVTRTRA
TATQHFLSARLRKRNLKNAFRLELPVQGRHMV
IVDDVTTGSTVAEIAQLLLRNGAAAVQVWCLC



1 **Fig. S7. Restoration of production of the *E. coli* GntX protein, containing proline**
2 **stretches, in *efp*-deficient cells.**

3 (A) Amino acid sequence of *E. coli* GntX. Proline stretches in GntX are colored red. (B)
4 Plasmids pMW119, pMW-*NmE*, pMW-*NmED*, and pMW-*EcEGY* were cotransformed
5 with the GntX plasmid into *E. coli* BW25113 and JW4107 (BW25113 Δ *efp::kan*) cells.
6 Whole-cell proteins were subjected to SDS-PAGE, and analyzed for the production of
7 the full-length GntX protein. Lane 1: molecular mass standards; lane 2:
8 BW25113/pMW119; lane 3: BW25113/pMW-*NmE*; lane 4: BW25113/pMW-*NmED*;
9 lane 5: BW25113/pMW-*EcEGY*; lane 6: JW4107/pMW119; lane 7:
10 JW4107/pMW-*NmE*; lane 8: JW4107/pMW-*NmED*; lane 9: JW4107/pMW-*EcEGY*;
11 lane 10, MagicMark molecular mass standards. (C) The GntX protein was recognized
12 by an anti-His₆-antibody. (D) Detection of the expressed *N. meningitidis* EF-P using an
13 anti-EF-P antibody.

14