

Supplementary figures

Depletion of LINC complex disrupts cytoskeleton dynamics and meiotic resumption in mouse oocytes

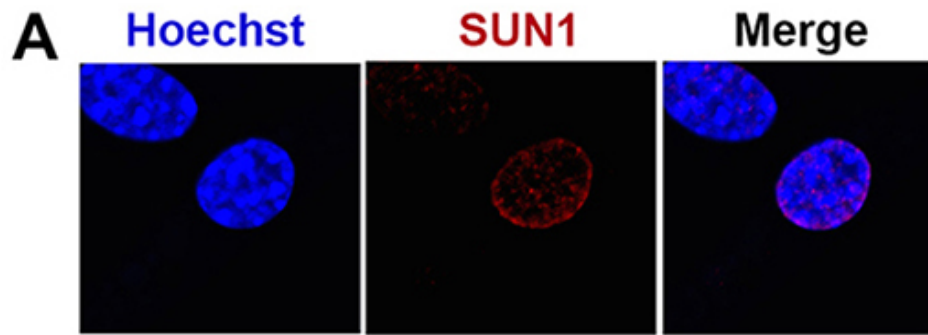
Yibo Luo, In-Won Lee, Yu-Jin Jo, Suk Namgoong and Nam-Hyung Kim*
Department of Animal Science, Chungbuk National University, Cheongju, Korea

*Correspondence: Nam-Hyung Kim.

Tel: +82-43-261-2546

Fax: +82-43-272-8853

E-mail: nhkim@chungbuk.ac.kr



Supplementary
Figure S1

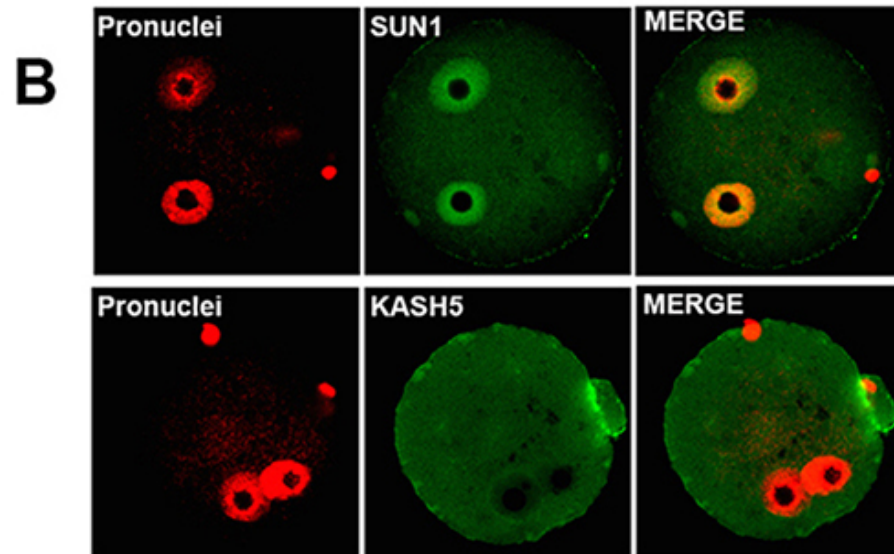
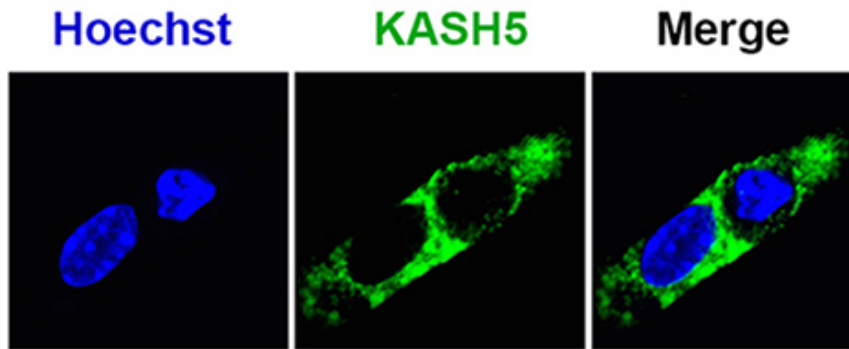


Figure S1. Localization of SUN1 and KASH5 in (A) mouse embryonic fibroblasts (MEF) and (B) zygotes at pronuclei stage. Bar=20 μ m.

Supplementary
Figure S2

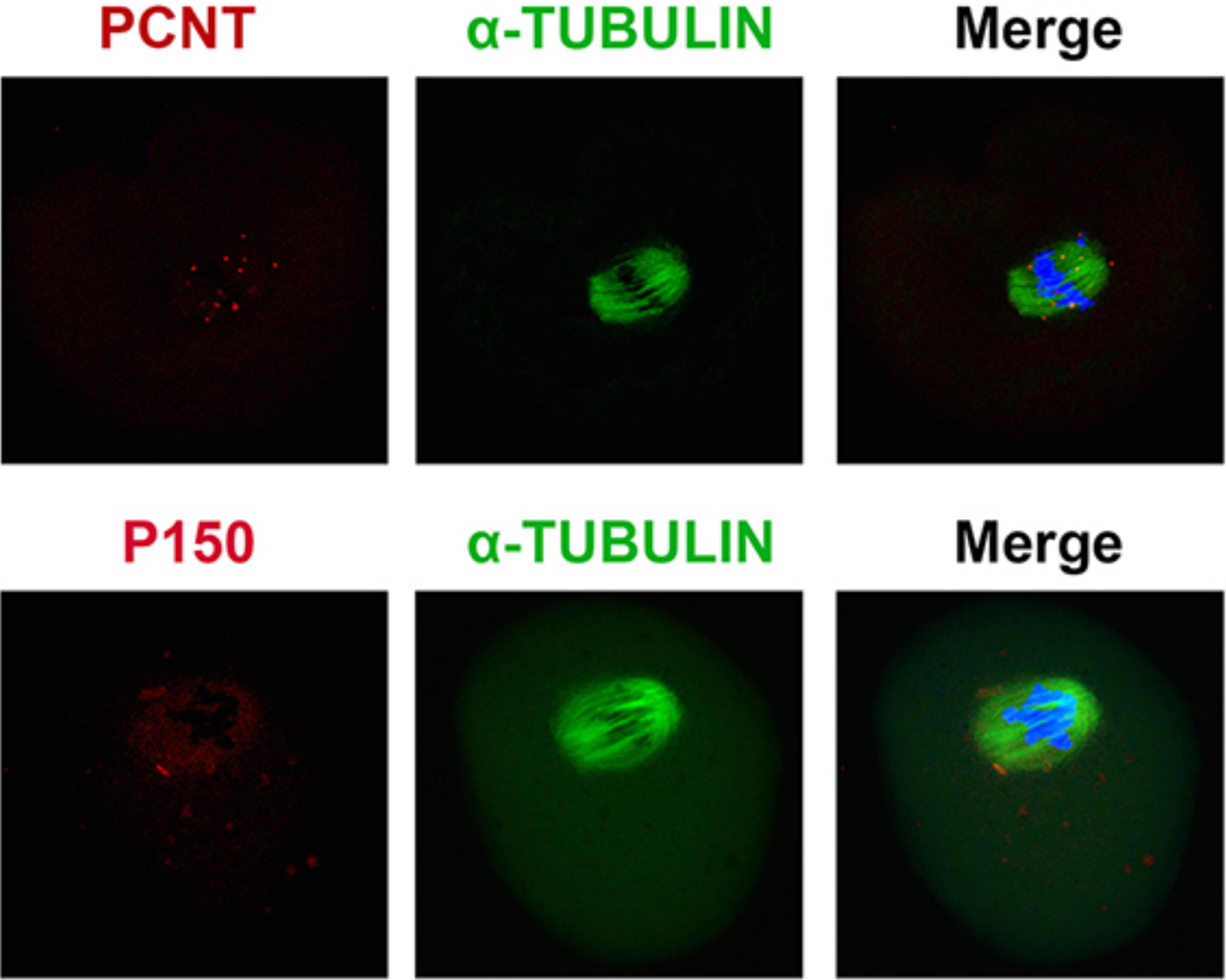


Figure S2. Localization of (A) PCNT and (B) P150 at MI stage. PCNT and P150 both show dot signals around the spindle at MI stage. Bar=20 μ m.

Supplementary
Figure S3

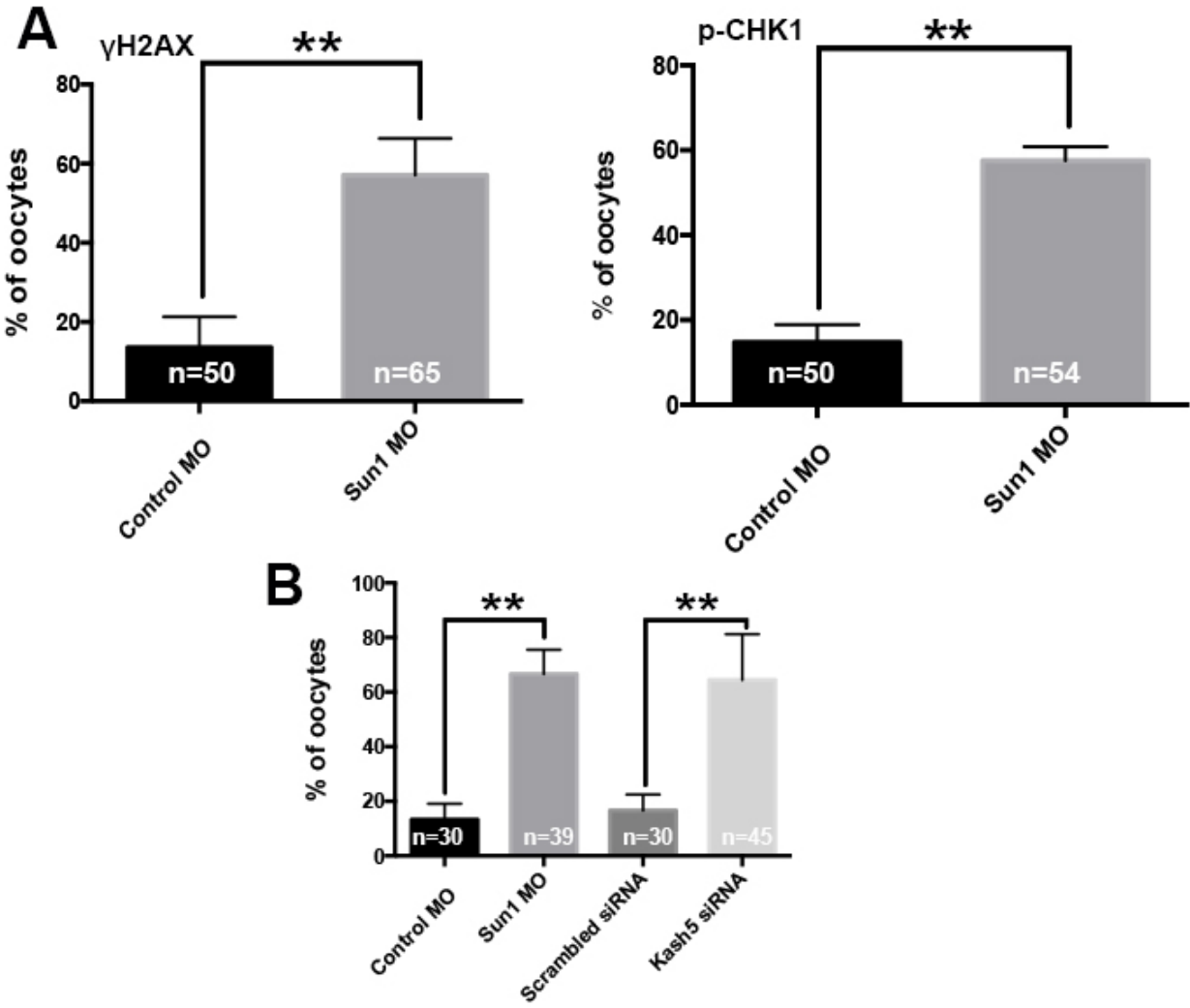


Figure S3. A, The statistical results of oocytes with positive γ H2AX and p-CHK1 signals. B, The statistical results of oocytes with migrated spindle after cultured for 7h. ** means $p < 0.001$.