



STRUCTURAL BIOLOGY
COMMUNICATIONS

Volume 72 (2016)

Supporting information for article:

**Crystal structure of microtubule affinity-regulating kinase 4 catalytic domain
in complex with a pyrazolopyrimidine inhibitor**

**John S. Sack, Mian Gao, Susan E. Kiefer, Joseph E. Myers, John A. Newitt, Sophie Wu and
Chunhong Yan**

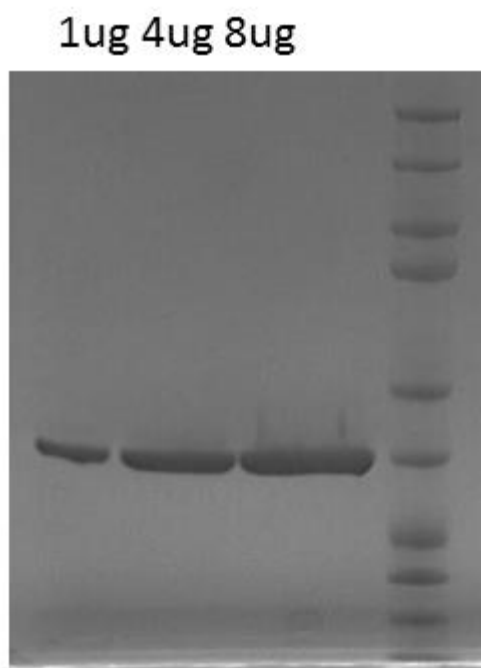


Figure S1 SDS-PAGE analysis of purified MARK4

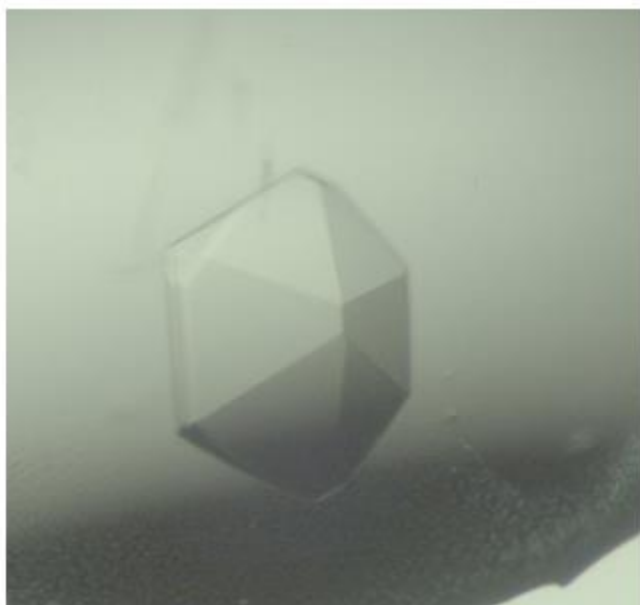


Figure S2 Crystal of MARK4 in complex with Compound 1 grown in 20% (w/v) PEG 6000, 0.2M MgCl₂, 0.1 M Tris, pH 8.5.