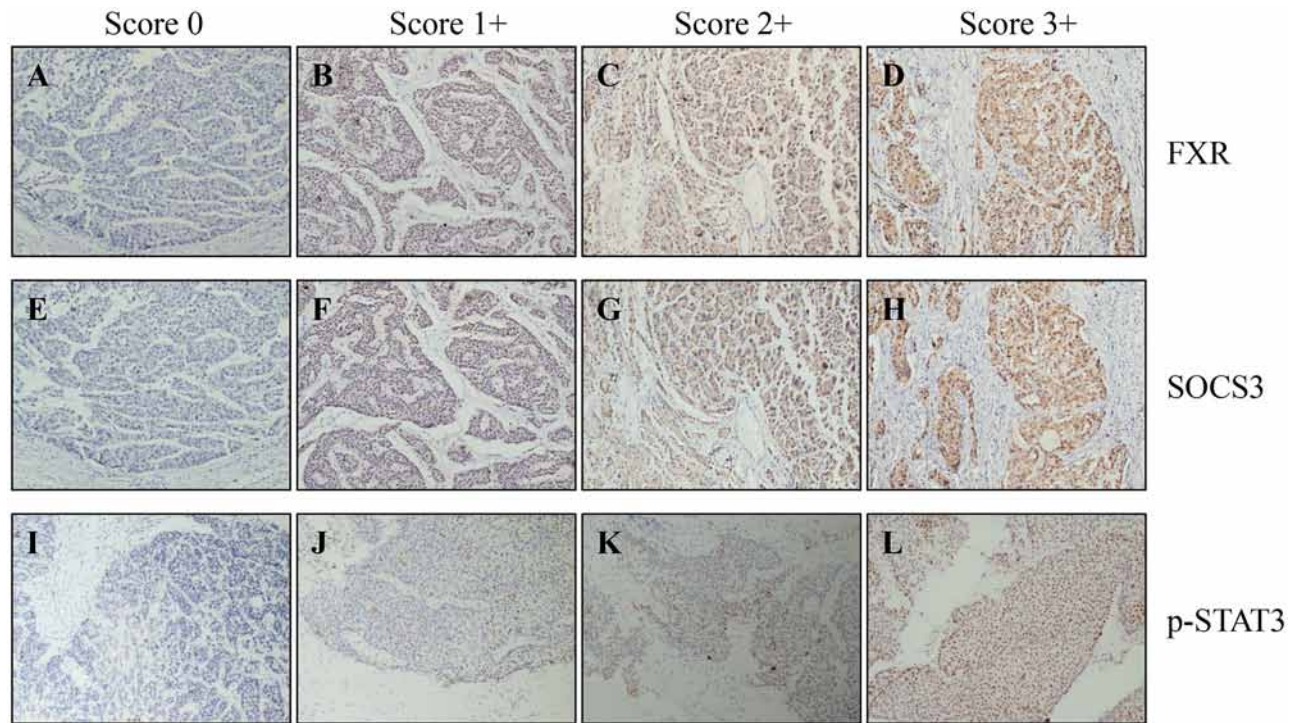


SUPPLEMENTARY FIGURE



Supplementary Figure S1: Scoring systems for immunohistochemical staining. Scores 0–3+ represent no, weak, moderate and strong expression, respectively. **A–D.** Representative immunohistochemical stainings for FXR in HCC tumoral tissues. **E–H.** Representative immunohistochemical stainings for SOCS3 in HCC tumoral tissues. **I–L.** Representative immunohistochemical stainings for phosphorylated STAT3 (p-STAT3) in HCC tumoral tissues.