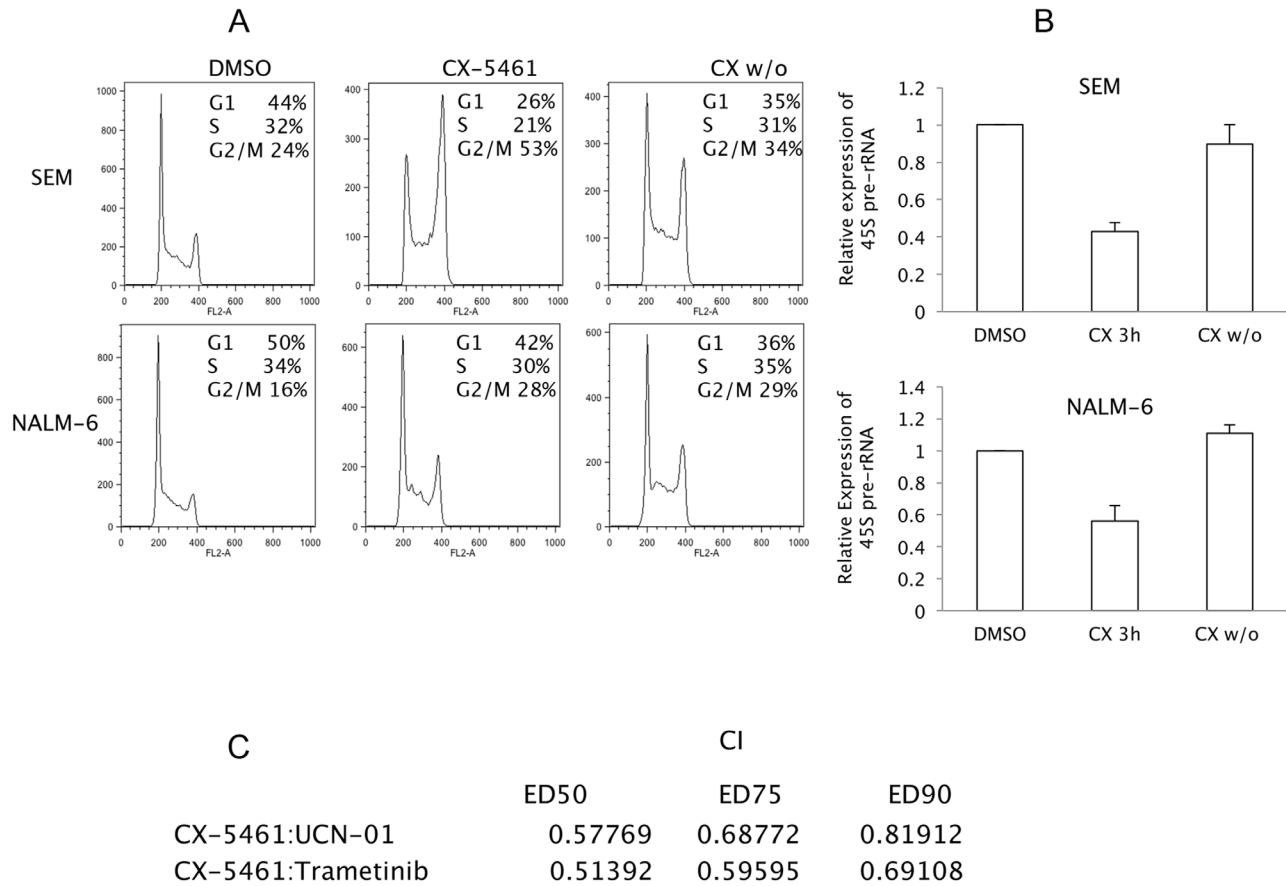


SUPPLEMENTARY FIGURE



Supplementary Figure S1: Experiment was performed as in figure 2a. Middle panel shows 24 hours continuous CX-5461 drug treatment. Representative flow cytometry data is shown from one of the three experiments. **b.** 45S pre-rRNA transcript levels were measured using quantitative PCR and normalized to the expression of GAPDH and Actin. 3 hours CX-5461 treatment substantially reduced the levels of 45S transcript while drug washout cells (CX w/o) show complete recovery of rRNA synthesis at 24 hours. **c.** Combination indices for drug treated NALM-6 cells were calculated using the method of Chou and Talalay (1).

REFERENCE

1. Chou TC, Talalay P. Quantitative analysis of dose-effect relationships: the combined effects of multiple drugs or enzyme inhibitors. *Adv Enzyme Regul.* 1984; 22:27–55