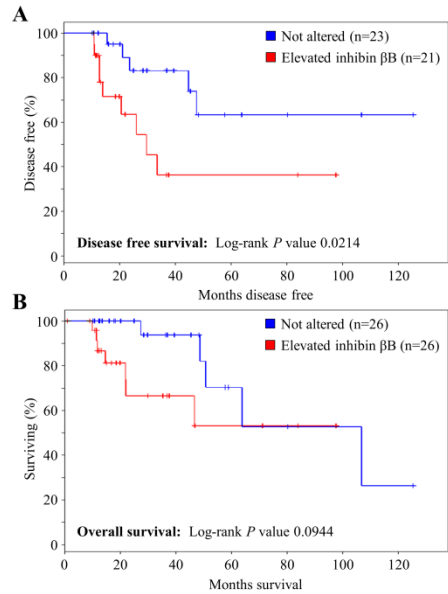


Activin B induces human endometrial cancer cell adhesion, migration and invasion by up-regulating integrin $\beta 3$ via SMAD2/3 signaling

Supplementary Material



Supplementary Figure 1. Elevated inhibin βB is associated with reduced disease free survival and a trend towards reduced overall survival in serous endometrial cancers. The cBioPortal for Cancer Genomics was used to query endometrial carcinomas with serous histology from The Cancer Genome Atlas (n=53) for up-regulation of inhibin βB subunit mRNA above the median. Disease free (A) and overall (B) survival differences between unaltered samples and those with elevated inhibin βB are displayed as Kaplan-Meier survival curves with a P value from a Log-rank test.