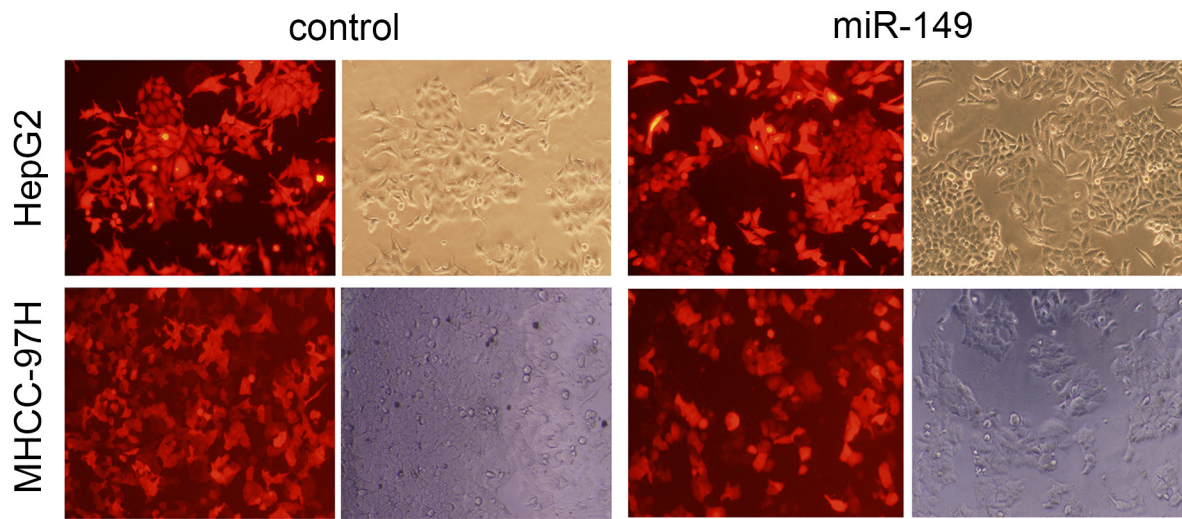
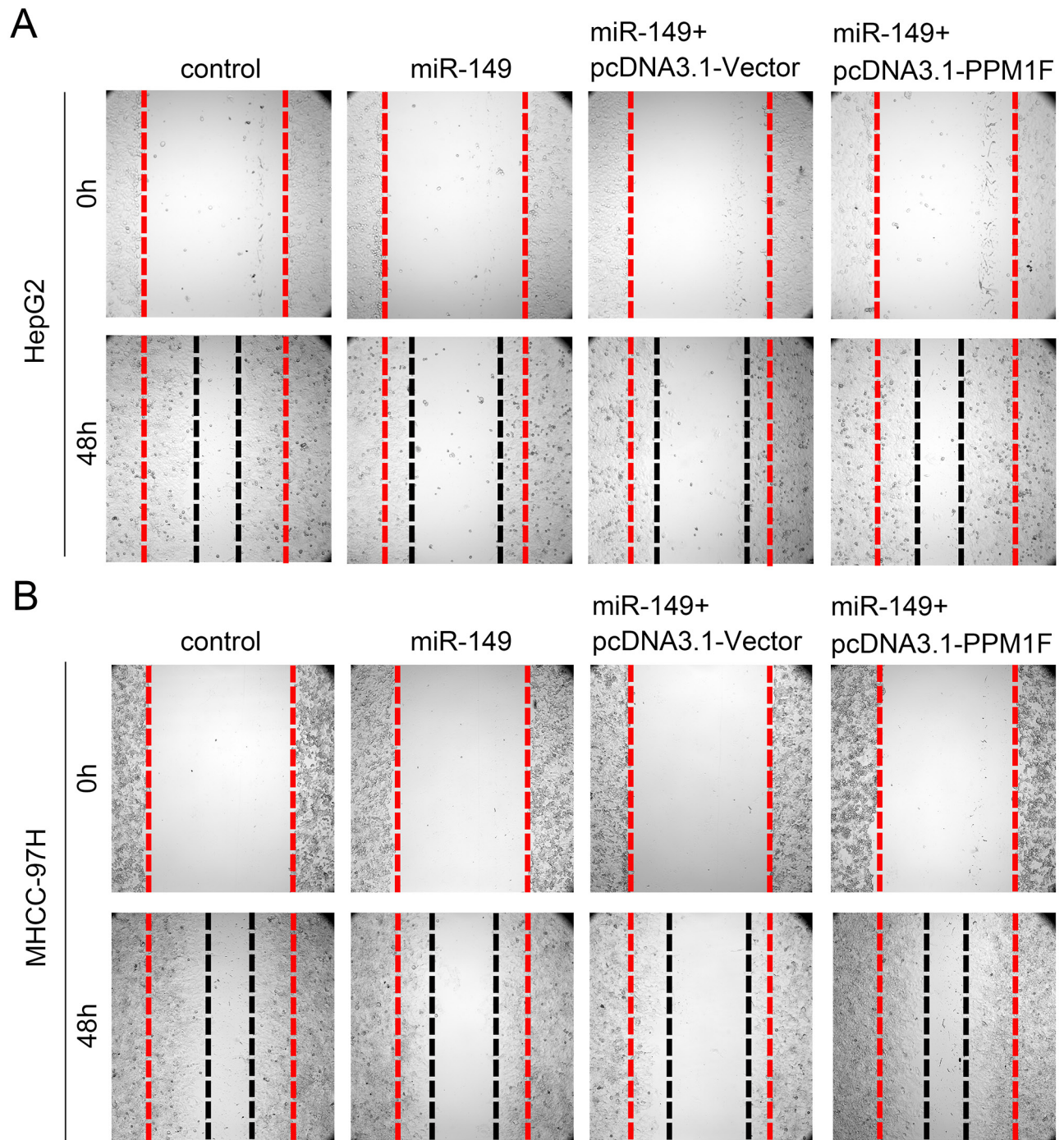


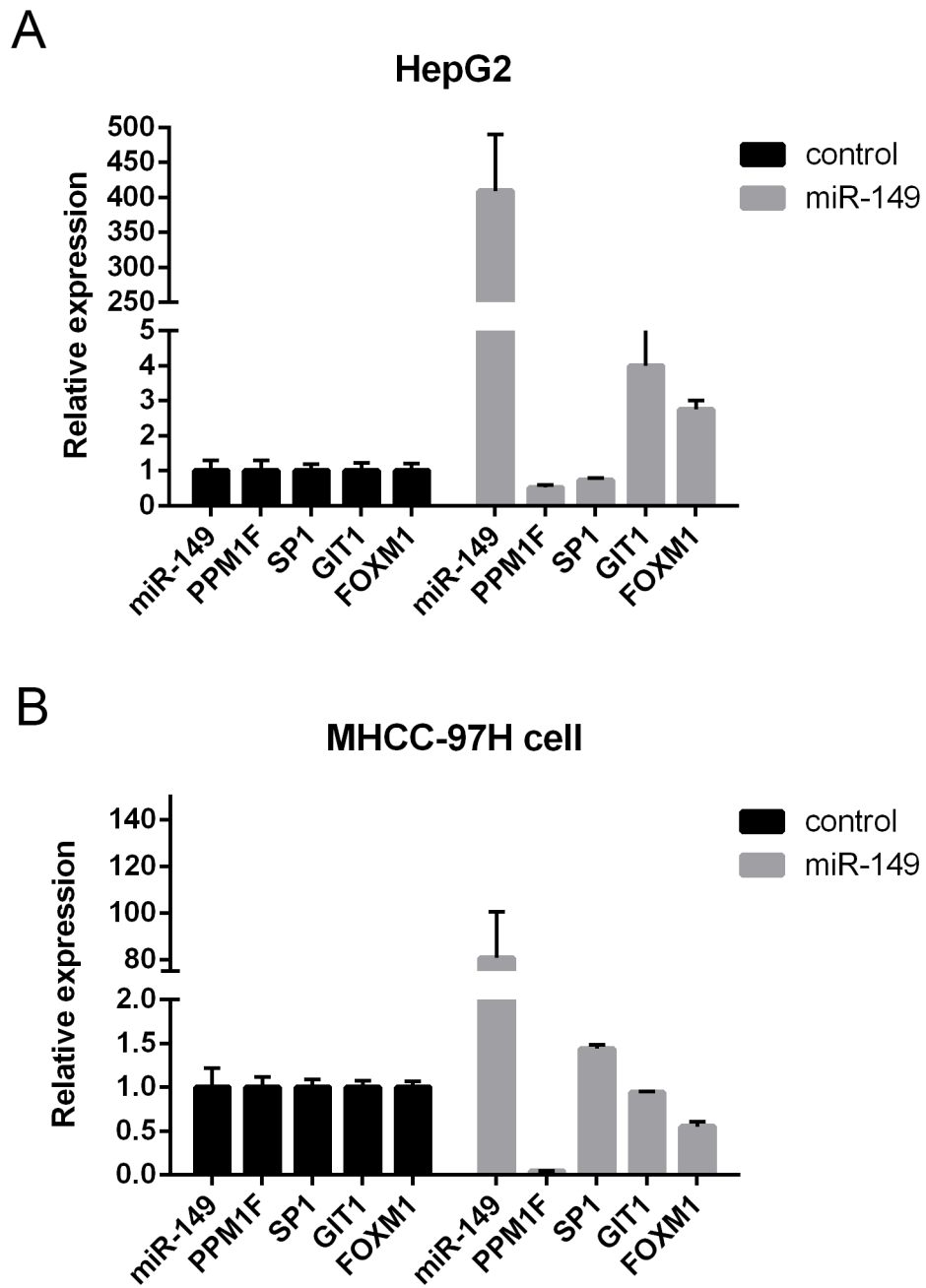
SUPPLEMENTARY FIGURES AND TABLES



Supplementary Figure S1: HepG2 and MHCC-97H cells transduced with miR-149 over-expression or negative control lentivirus were used in the study; the lentivirus was labeled with red fluorescence protein (RFP).



Supplementary Figure S2: Wound healing assay was performed in HepG2 A. and MHCC-97H B. cells after transduction with miR-149 or negative control lentivirus, and transfection with pcDNA3.1-Vector or pcDNA3.1-PPM1F plasmid.



Supplementary Figure S3: qRT-PCR was performed in HepG2 A. and MHCC-97H B. cells to analyze the effect of miR-149 overexpression on the expression of PPM1F and other putative target genes (SP1, GIT1, FOXM1).

Supplementary Table S1: Sequences of primers used for qRT-PCR

Transcript	Sequence	Size
PPM1F	5'-GGAGGAGGACGATGACGAGGAG-3'	82 bp
	5'-GCGGTTAAAGAAACTCTGTGCCAG-3'	
SP1	5'-ATTGGGTACTTCAGGAATCCAGGTG-3'	115 bp
	5'-TCCATCACCACCAGCCCCAT-3'	
GIT1	5'-TAAAGCCAACCCCAAGACAAAG-3'	116 bp
	5'-CGGTGACTCCATCATCGTCCC-3'	
FOXM1	5'-CAAAGGACAGAAGTGACCCTGGAG-3'	116 bp
	5'-CACCATCACAGGTCTCCCGTTTC-3'	
GAPDH	5'-CATGAGAAGTATGACAACAGCCT-3'	113 bp
	5'-AGTCCTTCCACGATAACCAAAGT-3'	
miR-149	5'-ATTCTCTCATCTGGCTCCGTGT-3'	72 bp
	5'-TATGGTTGTTCTGCTCTCTGTGTC-3'	
U6	5'-CAGCACATATACTAAAATTGGAACG-3'	76 bp
	5'-ACGAATTGCGTGTCAATCC-3'	

Supplementary Table S2: List of antibodies used for western blotting

Antibody	Host	Supplier	Product No.	Working Dilution
anti-PPM1F	Mouse	Santa Cruz Biotechnology	J1311	1:1000
anti-MLC2	Rabbit	Cell Signaling Technology	#3672	1:1000
anti-pMLC2 (Thr18/Ser19)	Rabbit	Cell Signaling Technology	#3674	1:1000
anti-PDGFR α	Rabbit	Epitomics	#3938-1	1:1000
anti-SP1	Rabbit	Epitomics	#5407-1	1:1000
anti-YWHAZ	Rabbit	Epitomics	#5175-1	1:10000
anti-RAP1	Rabbit	Epitomics	#2291-1	1:500
anti-CD47	Rabbit	Epitomics	#3847-1	1:1000
HRP-coupled anti-mouse IgG	Goat	Santa Cruz Biotechnology	sc-2055	1:10,000
HRP-coupled anti-rabbit IgG	Goat	Santa Cruz Biotechnology	sc-2005	1:10,000