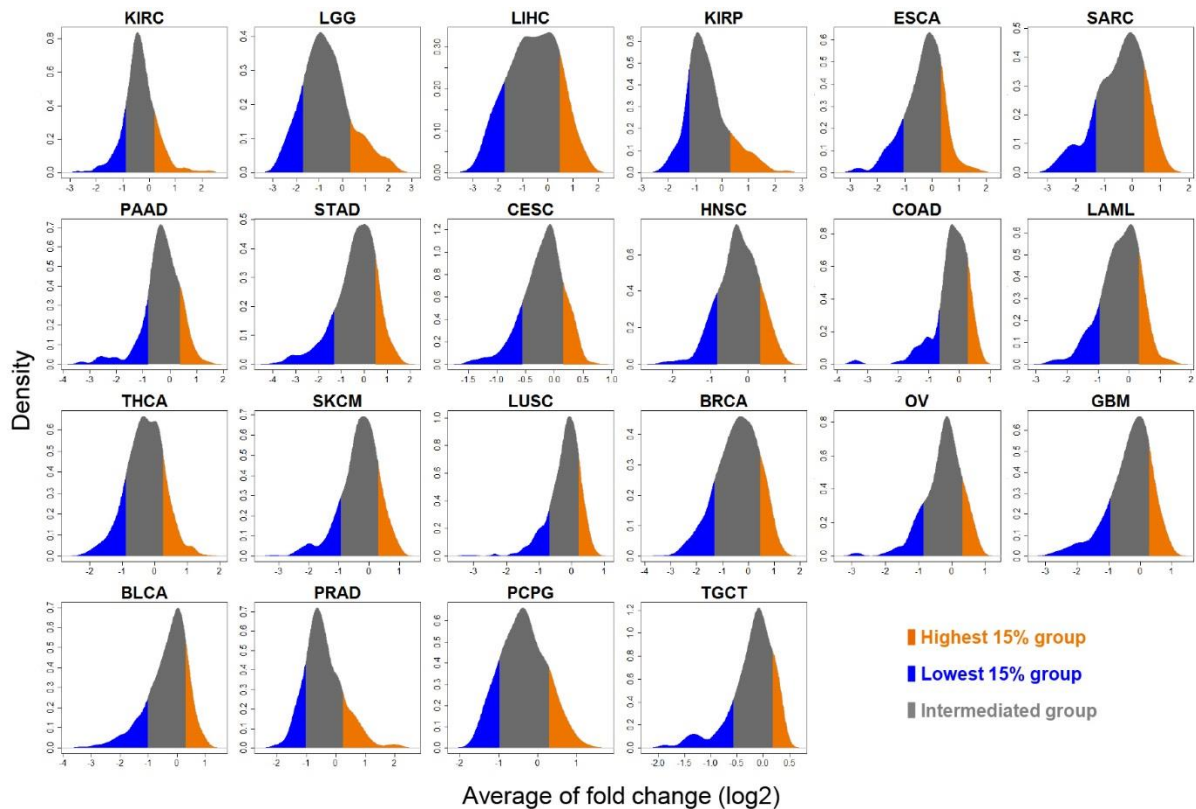


## **SUPPLEMENTARY INFORMATION**

### **Expressional Subpopulation of Cancers Determined by G64, a Co-regulated Module**

**Jae-Woong Min, Sun Shim Choi\***

Department of Medical Biotechnology, College of Biomedical Science, and Institute of Bioscience & Biotechnology, Chuncheon 24341, Korea



**Supplementary Fig. 2.** Density plots of the average of the G64 expressions in each 22 cancer. BLCA, bladder urothelial carcinoma; BRCA, breast invasive carcinoma; CESC, Cervical squamous cell carcinoma and endocervical adenocarcinoma; COAD, colon adenocarcinoma; ESCA, esophageal carcinoma; GBM, glioblastoma multiforme; HNSC, head and neck squamous cell carcinoma; KIRC, kidney renal clear cell carcinoma; KIRP, kidney renal papillary cell carcinoma; LAML, acute myeloid leukemia; LGG, brain lower grade glioma; LIHC, liver hepatocellular carcinoma; LUSC, lung squamous cell carcinoma; OV, ovarian serous cystadenocarcinoma; PAAD, pancreatic adenocarcinoma; PCPG, pheochromocytoma and paraganglioma; PRAD, prostate adenocarcinoma; SARC, sarcoma; SKCM, skin cutaneous melanoma; STAD, stomach adenocarcinoma; TGCT, testicular germ cell tumors; THCA, thyroid carcinoma.