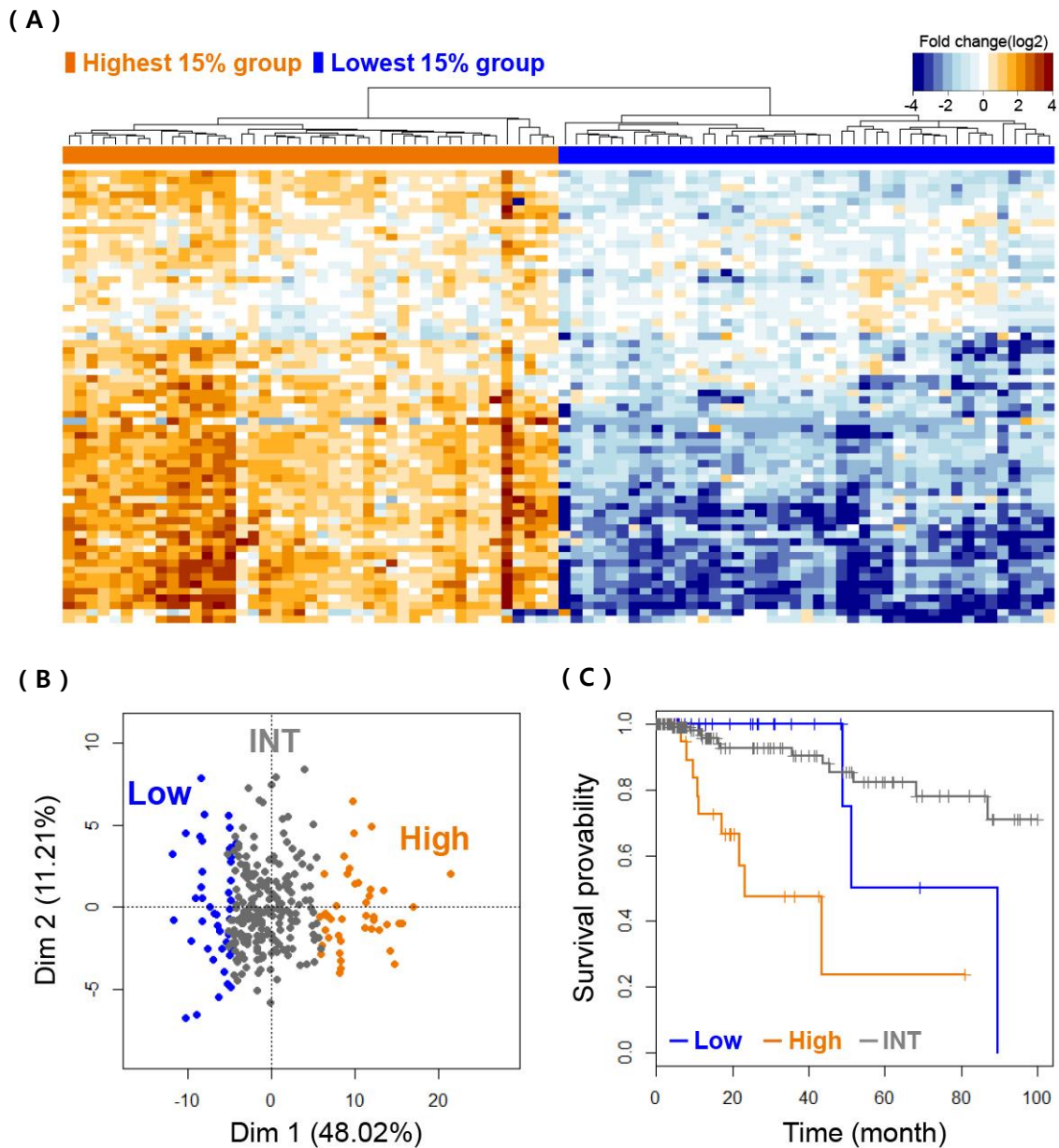


## **SUPPLEMENTARY INFORMATION**

### **Expressional Subpopulation of Cancers Determined by G64, a Co-regulated Module**

**Jae-Woong Min, Sun Shim Choi\***

Department of Medical Biotechnology, College of Biomedical Science, and Institute of Bioscience & Biotechnology, Chuncheon 24341, Korea



**Supplementary Fig. 5.** Heat map analysis using the 86 samples corresponding to the highest 15% and the lowest 15% of the G64 expression among the total 289 kidney renal papillary cell carcinoma samples. Low, the lowest 15% group; INT, intermediate group; High, the highest 15% group.