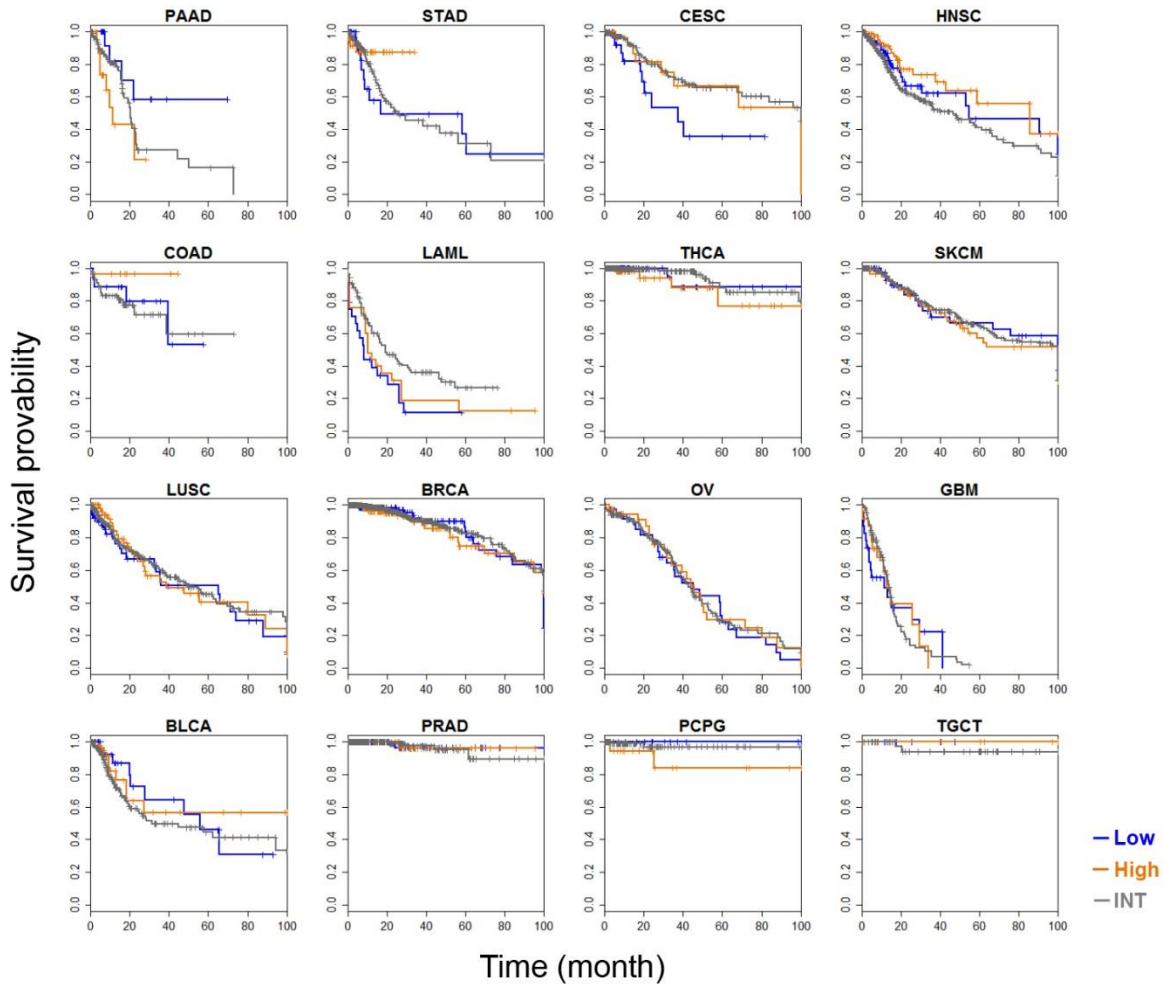


## **SUPPLEMENTARY INFORMATION**

### **Expressional Subpopulation of Cancers Determined by G64, a Co-regulated Module**

**Jae-Woong Min, Sun Shim Choi\***

Department of Medical Biotechnology, College of Biomedical Science, and Institute of Bioscience & Biotechnology, Chuncheon 24341, Korea



**Supplementary Fig. 8.** KM analysis of the 16 survival-non-differentiating cancers based on the G64 expression. BLCA, bladder urothelial carcinoma; BRCA, breast invasive carcinoma; CESC, Cervical squamous cell carcinoma and endocervical adenocarcinoma; COAD, colon adenocarcinoma; GBM, glioblastoma multiforme; HNSC, head and neck squamous cell carcinoma; LAML, acute myeloid leukemia; LUSC, lung squamous cell carcinoma; OV, ovarian serous cystadenocarcinoma; PAAD, pancreatic adenocarcinoma; PCPG, pheochromocytoma and paraganglioma; PRAD, prostate adenocarcinoma; SKCM, skin cutaneous melanoma; STAD, stomach adenocarcinoma; TGCT, testicular germ cell tumors; THCA, thyroid carcinoma; Low, the lowest 15% group; INT, intermediate group; High, the highest 15% group.