

Stem cell-derived tissue-associated regulatory T cells ameliorate the development of autoimmunity

Mohammad Haque^{1, #}, Jianyong Song^{2, #}, Kristin Fino¹, Praneet Sandhu¹, Xinmeng Song¹, Fengyang Lei¹, Songguo Zheng³, Bing Ni², Deyu Fang⁴, and Jianxun Song¹

¹ Department of Microbiology and Immunology, The Pennsylvania State University College of Medicine, Hershey, PA 17033, USA

² Institutes of Irradiation/Immunology, The Third Military Medical University, Chongqing 400038, China

³ Department of Medicine, The Pennsylvania State University College of Medicine, Hershey, PA 17033, USA

⁴ Department of Pathology, Northwestern University Feinberg School of Medicine, Chicago, IL 60611, USA

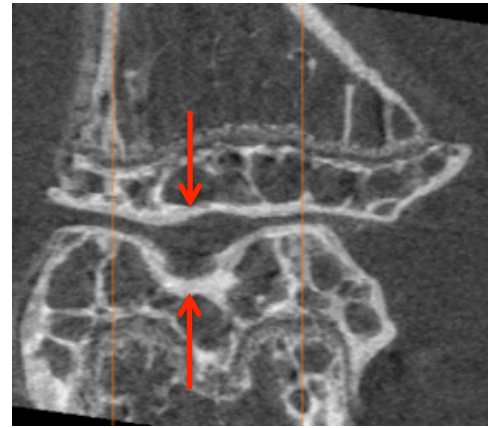
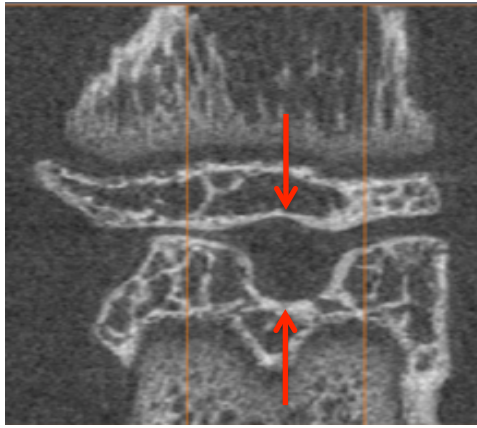
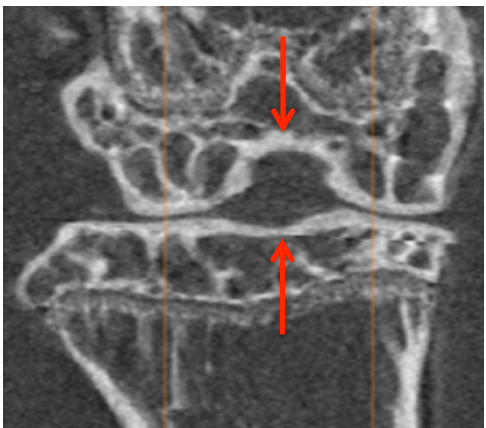
These authors contributed equally to this work

Normal (left knee)

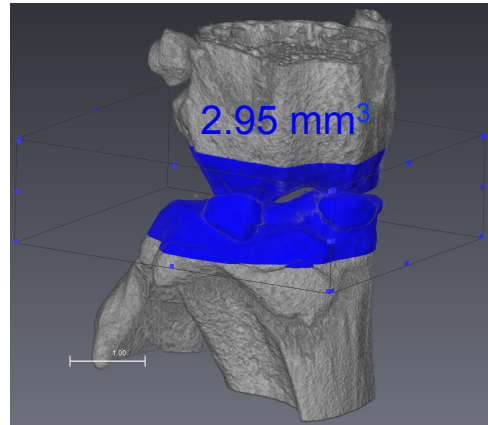
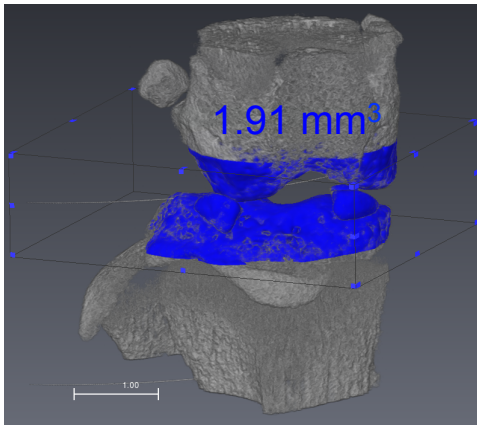
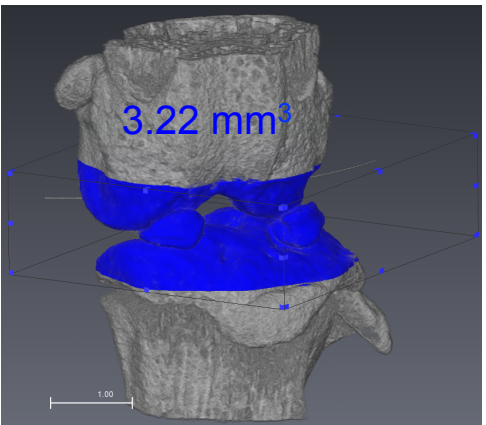
MIDR (arthritis induced)

MiDR-TCR-FoxP3 (treated)

A



B



***In vivo* imaging of the bone architecture around the mouse knees by the high-resolution micro-computed tomography (micro-CT) system. (A)** The scans were performed with 2.2 mm length, and images were captured after further image processing (volume rendering and transformation). **(B)** Bone volume around knee joint was evaluated using three dimensional reconstruction of micro-CT images, and bone volume inside the volume of interest was calculated.