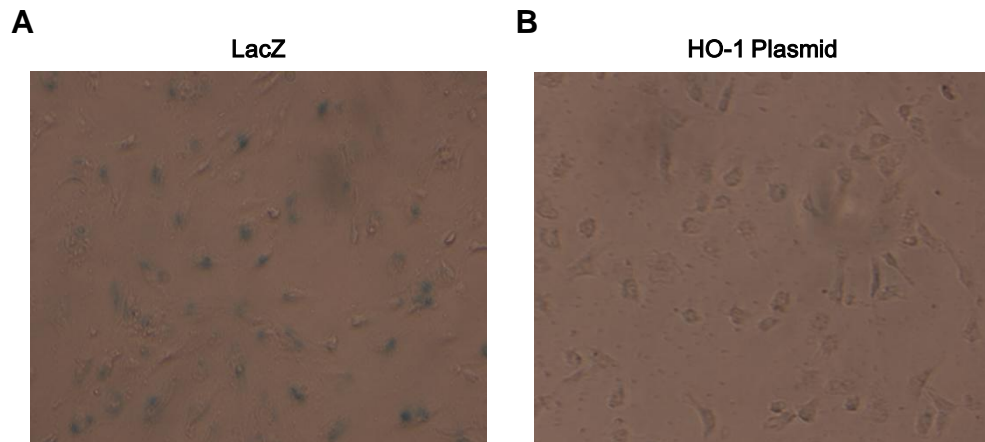


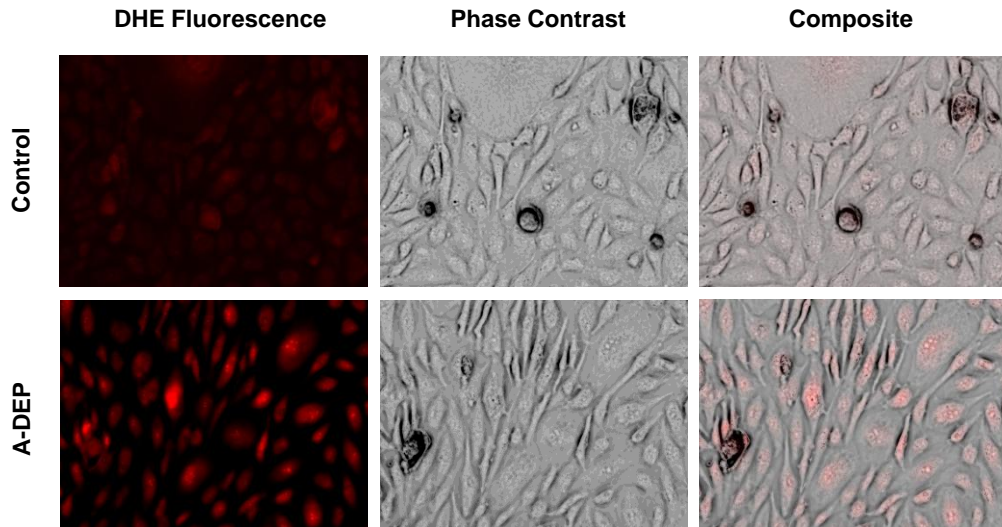
# Supplementary Figure 1



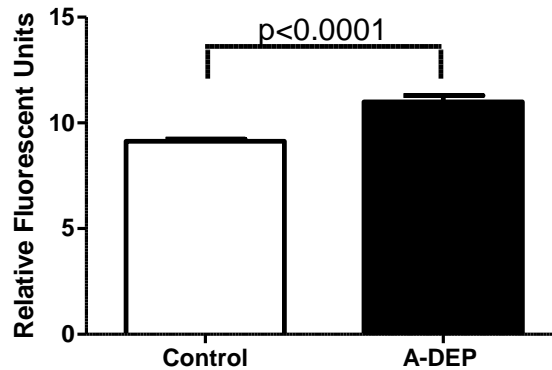
Transfection of HMEC cells with A) pcDNA 3.1D/V5-His/lacZ, plasmid expressing LacZ and B) pcDNA 3.1D/V5-HO-1 for 5 hr. Cells were stained with X-Gal staining solution and examined under the microscope. Notice that more than 50% of the all cells stained positively for LacZ (blue) in A.

## Supplementary Figure 2

**A**



**B**



**DEP induces ROS generation in BAECs.** A) DEP and ROS generation. BAECs were treated with media alone (Top row) or A-DEP at 50  $\mu\text{g}/\text{ml}$  (bottom row) for 4 hours. Representative images for DHE fluorescence (left columns), phase contrast (middle columns) and Composite (right columns), obtained by overlay of fluorescence and light microscopy images, were taken out of mosaic pictures. B) Fluorescence was quantified from whole mosaic pictures as indicated in the Materials and Methods.

## Supplementary Table 1. Primers

Genes	Sequence
$\beta$ -actin	Forward: CCAACCGCGAGAAGATGACC Reverse: GATCTTCATGAGGTAGTCAGT
HO-1	Forward: GTGGAAACGGTTCACGTAGCGC Reverse: CTTTCAGAAGGGCCAGGTGACC
IL-8	Forward: TGTCAGCACAACATGGTCTTG Reverse: TGAGGTTTTGATTGTTTCATGTCTT
ATF4	Forward: TCTCCAGCGACAAGGCTAA Reverse: CAATCTGTCCCGGAGAAGG
ICAM	Forward: CCTTCCTCACCGTGTACTGG Reverse: AGCGTAGGGTAAGGTTCTTGC
VCAM	Forward: TGGACATAAGAACTGGAAAAGG Reverse: CCACTCATCTCGATTTCTGGA
MCP-1	Forward: TGCTCATAGCAGCCACCTTCATTC Reverse: GACACTTGCTGCTGGTGATTCTTC