

SUPPLEMENTAL MATERIAL

Supplement Table 1: Descriptive statistics of stent thrombosis, gender, race, and age by stent type

Stent Type	Stent Thrombosis	Gender	Race	Age (mean± SD)
BMS (n=446)	ST (n =15)	Male (n=15)	Caucasian (n=11)	64.00 ± 8.72
			Black (n=3)	59.00 ± 7.00
			Hispanic (n=1)	60.00 ± ---
		Female (n=0)	Caucasian (n=0)	---
			Black (n=0)	---
			Hispanic (n=0)	---
	No ST (n =431)	Male (n=351)	Caucasian (n=232)	65.28 ± 8.68
			Black (n=89)	60.61 ± 9.46
			Hispanic (n=28)	66.28 ± 10.51
			Other (n=2)	54.00 ± 4.24
		Female (n=80)	Caucasian (n=39)	65.56 ± 12.04
			Black (n=30)	60.23 ± 7.78
			Hispanic (n=10)	64.80 ± 10.36
	Other (n=1)	71.00 ± ---		
Supera™ (n=43)	ST (n =3)	Male (n=3)	Caucasian (n=2)	67.00 ± 8.48
			Black (n=1)	62.0 ± ---
			Hispanic (n=0)	---
			Other (n=0)	---
		Female (n=0)	Caucasian (n=0)	---
			Black (n=0)	---
			Other (n=0)	---
			Hispanic (n=0)	---
	ST (n =40)	Male (n=3)	Caucasian (n=29)	67.24 ±9.36
			Black (n=5)	67.00 ± 4.89
			Hispanic (n=2)	77.00 ± 11.31
			Other (n=0)	---
		Female (n=4)	Caucasian	61.00 ± 7.07

			(n=2)	
			Black (n=2)	62.00 ± 8.48
			Other (n=0)	---
			Hispanic (n=0)	---
Viabahn™ (n=47)	ST (n =5)	Male (n=5)	Caucasian (n=4)	59.00 ± 4.69
			Black (n=1)	65.00 ± ---
			Hispanic (n=0)	---
			Other (n=0)	---
		Female (n=0)	Caucasian (n=0)	---
			Black (n=0)	---
			Hispanic (n=0)	---
			Other (n=0)	---
	No ST (n =41)	Male (n=6)	Caucasian (n=27)	65.00 ± 5.44
			Black (n=10)	64.90 ± 10.13
			Hispanic (n=1)	57.00 ± ---
			Other (n=0)	---
Female (n=3)		Caucasian (n=3)	59.33 ± 17.67	
		Black (n=0)	---	
		Hispanic (n=0)	---	
		Other (n=0)	---	
Zilver PTX™ drug coated Stents (n=68)	ST (n =3)	Male (n=2)	Caucasian (n=1)	56.00 ±
			Black (n=1)	65.00 ± ---
			Hispanic (n=0)	---
			Other (n=0)	---
		Female (n=1)	Caucasian (n=0)	---
			Black (n=1)	61.00 ± ---
			Hispanic (n=0)	---
			Other (n=0)	---
	No ST (n=65)	Male (n=48)	Caucasian (n=33)	65.81 ± 10.69
			Black (n=9)	59.33 ± 5.500
			Hispanic (n=4)	65.75 ± 4.03
			Other (n=2)	56.50 ± 3.53
		Female (n=17)	Caucasian (n=11)	62.09 ± 12.24
			Black (n=3)	65.00 ± 10.81
Hispanic (n=3)			65.66 ± 11.93	

			Other (n=0)	---
--	--	--	-------------	-----

Supplemental Figure 1: Kaplan-Meier curves: Stent Thrombosis (ST) by stent type (post 12 months)

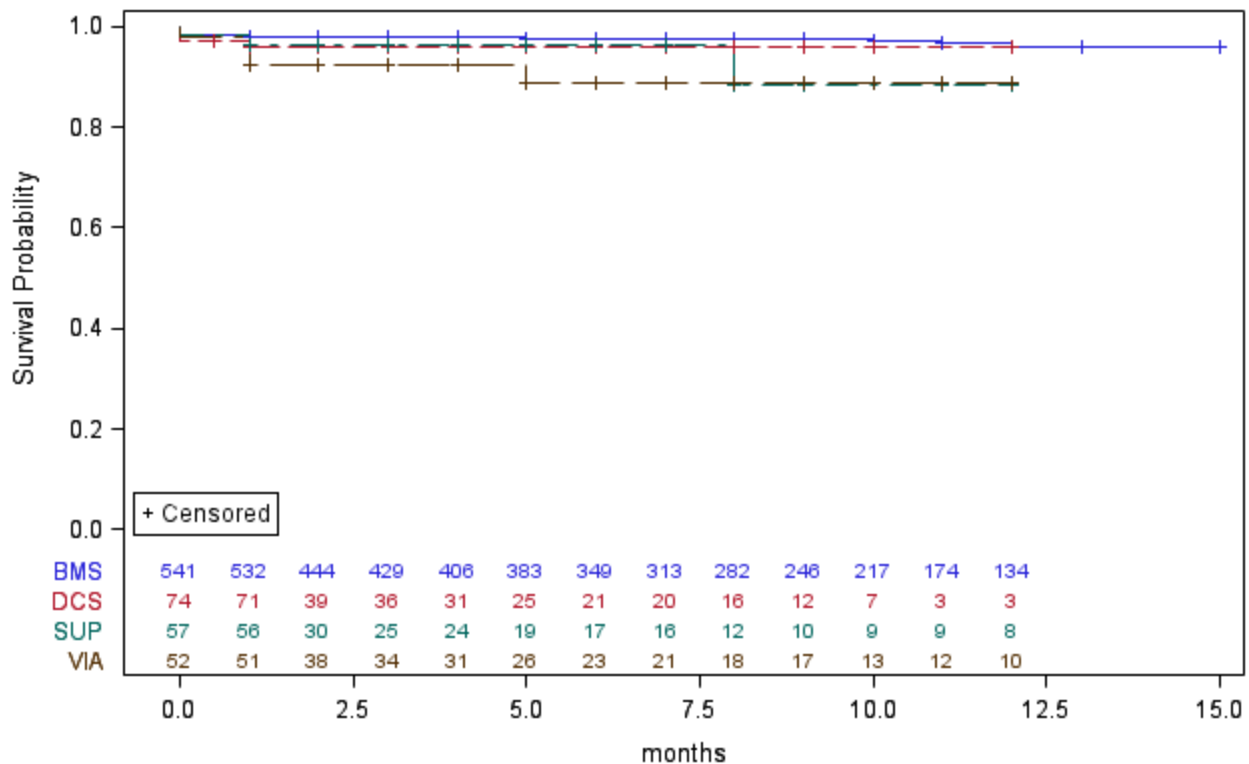
Censored at death and follow up months < 12 year; BMS= Bare metal stent; DCS= Drug coated stent; SUP= Supera vascular mimetic stent; VIA= Viabahn™ self-expanding stent graft. Frailty model adjusted for age, ABI, diabetes mellitus ,CLI, CAD, smoking status; DCS vs. BMS HR=1.06 p=0.9317; SUP vs. BMS HR=1.10 p=0.9005; VIA Vs BMS HR=1.28 p=0.7341

Supplemental Figure 2: Kaplan-Meier curves: Stent Thrombosis (ST) by CTO (post 12 months)

Censored at death and follow up months < 12 year; CTO = Chronic total occlusion
Frailty model adjusted for age, ABI, diabetes mellitus ,CLI, CAD, smoking status;
CTO vs. No CTO HR=1. 22 p=0.6467

Kaplan-Meier Curves: ST by stent types

With Number of Subjects at Risk



Stent Types — BMS — DCS — SUP — VIA

Kaplan-Meier Curves: ST between CTO and No CTO groups

With Number of Subjects at Risk

