

Figure S1.

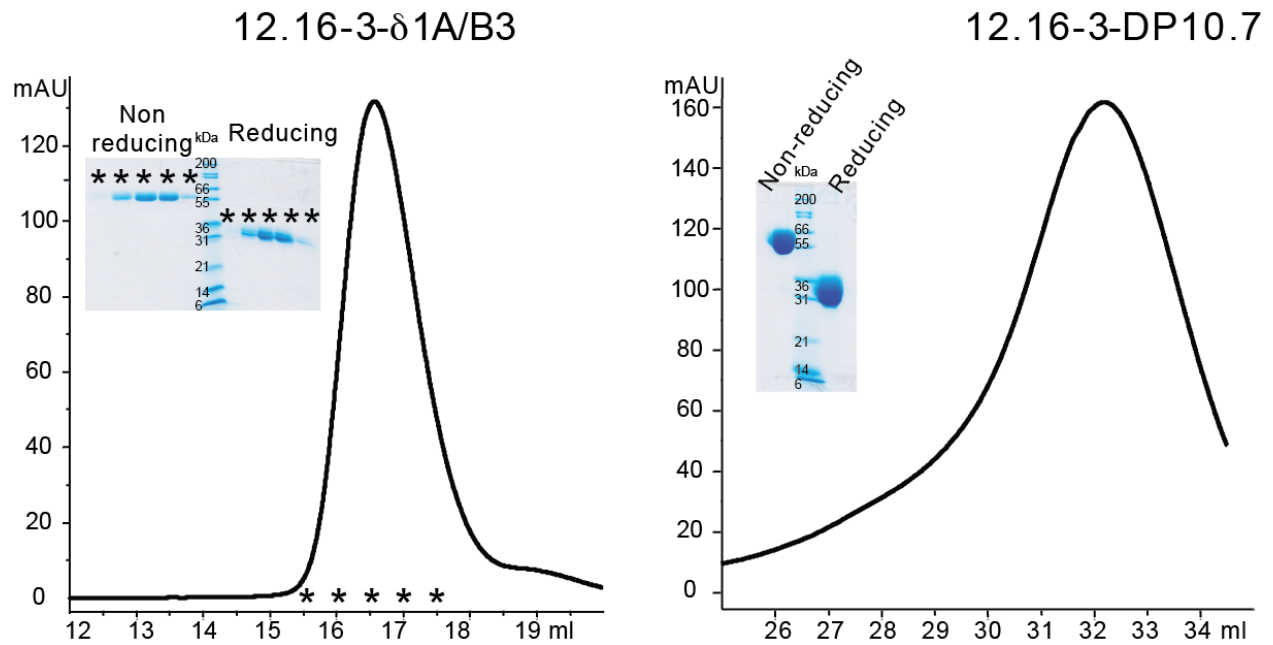


Figure S1: Expression and size exclusion chromatography purification of CDR3 δ loop swapped TCRs. Superdex S200 gel filtration purification profiles of chain swapped TCRs are shown with SDS-PAGE (non-reducing and reducing conditions).

Figure S2.

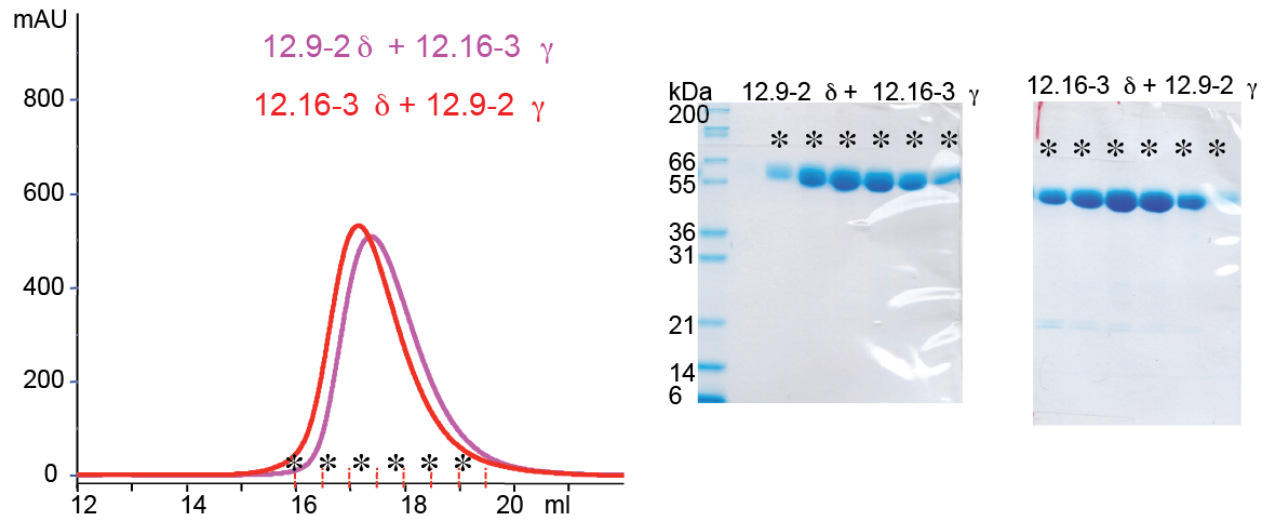


Figure S2: Expression and size exclusion chromatography of γ -chain swapped TCRs. Superdex S200 gel filtration purification profiles of chain swapped TCRs are shown with SDS-PAGE (non-reducing condition).

Figure S3.

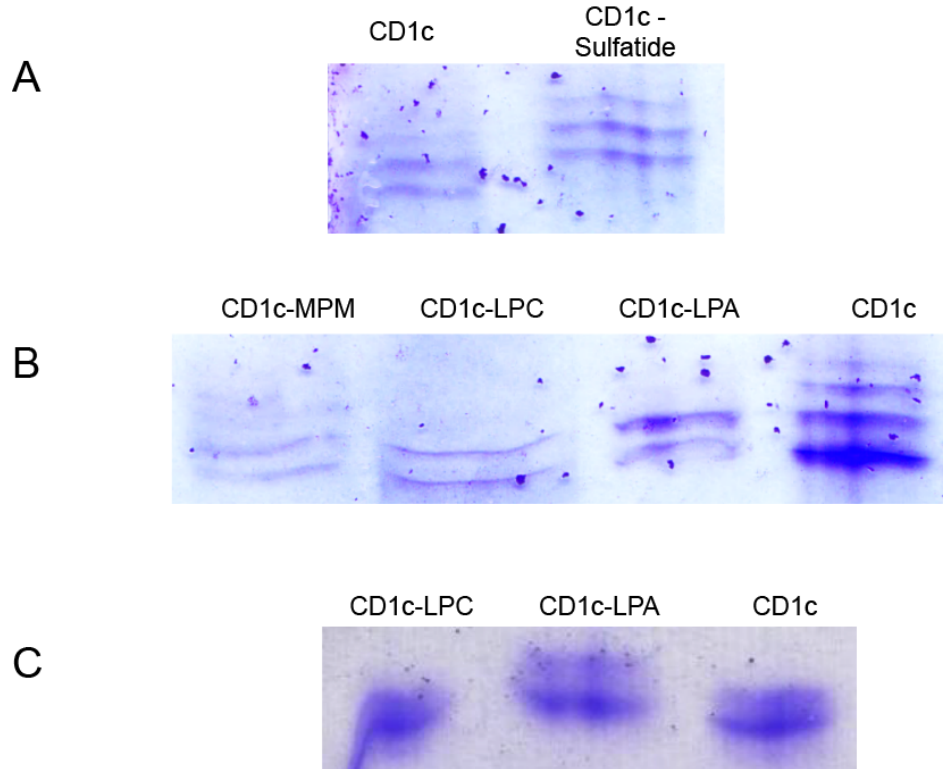


Figure S3: Loading of CD1c molecule with lipids. CD1c loaded with mixed sulfatide and run on isoelectric focusing (IEF) gel 3-9 (A), CD1c loaded with MPM and then incubated with LPC and run on IEF 3-9 (B), CD1c loaded with LPA and run on IEF 3-9 (B), CD1c loaded with LPC, LPA and run on IEF 3-9 (C).