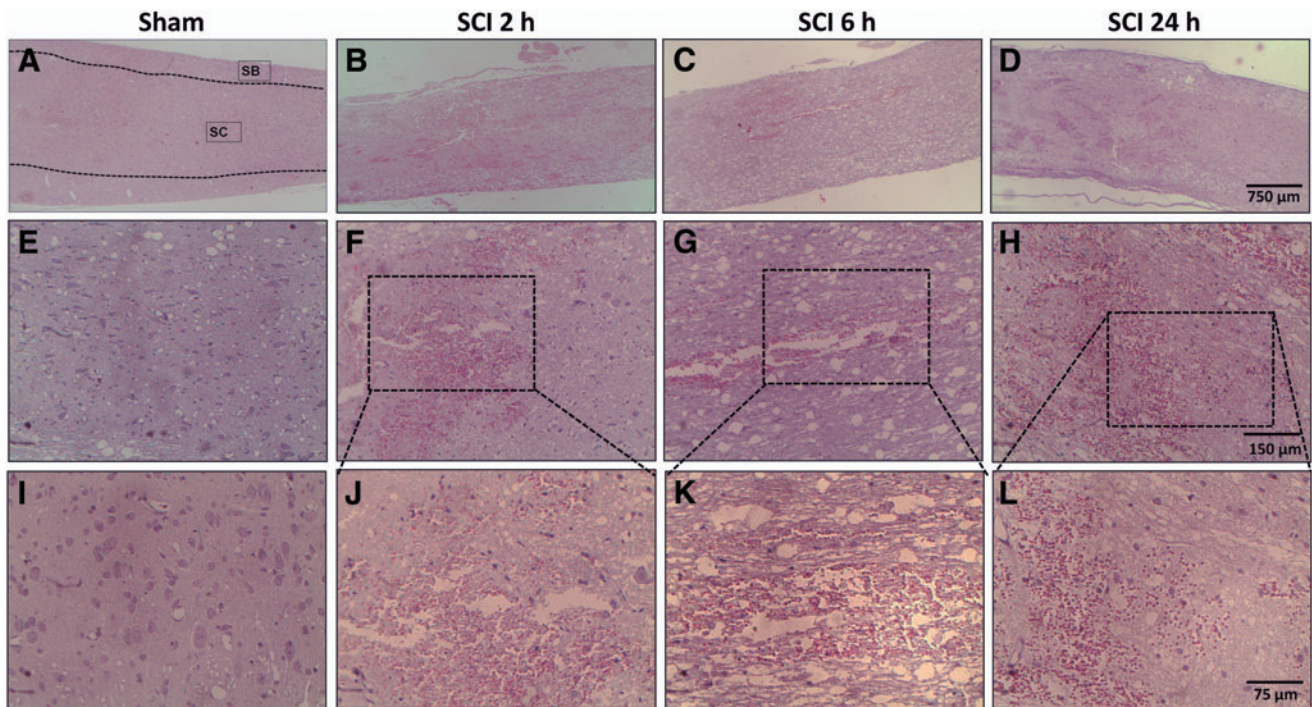


## Supplementary Data



**SUPPLEMENTARY FIG. 1.** Spinal cord histological analysis of animals submitted to acute SCI. Spinal cord longitudinal sections were stained with hematoxylin and eosin (H&E). (A) Representative image of spinal cord of sham-operated group; the gray matter is delimited by the dashed lines and is surrounded by white matter. (E and I) Magnified images of the gray matter clear of histological alterations. (B–D) Representative images of SCI animals assessed 2 h (B), 6 h (C), or 24 h (D) after surgery. (F–H) Presence of cellular debris, extravasated erythrocytes and cavitated areas within the injured gray matter. (J–L) Magnified images of areas highlighted in F–H, where it is possible to observe liquefactive necrosis characterized by amorphous background without cells and the presence of marked hemorrhage. SCI, spinal cord injury. (A–D original magnification 20 $\times$ ; E–H original magnification 100 $\times$ ; I–L original magnification 400 $\times$ .)