

Fig. S1

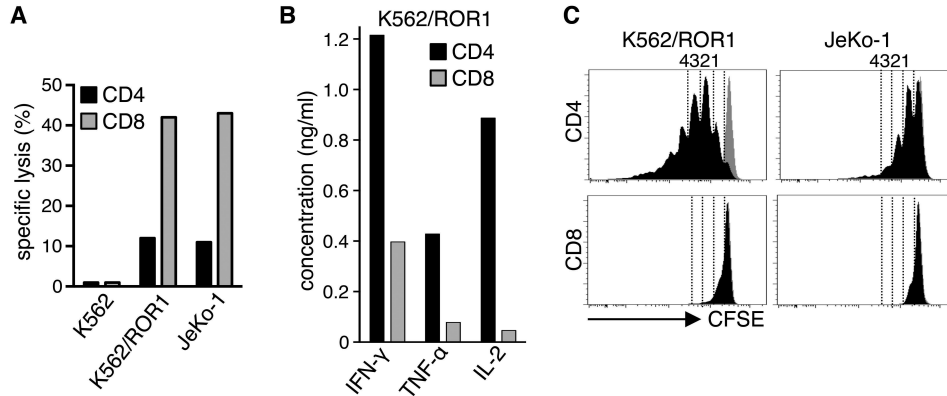


Figure S1: CD4⁺ and CD8⁺ ROR1-CAR-T-cells differ in effector function. (A) Cytolytic activity of ROR1 CAR-T-cells against ROR1⁺ (K562/ROR1, JeKo-1) and control (K562) target cells at an E:T ratio of 30:1 analyzed by a standard 4 h chromium release assay. (B) Cytokine production by ROR1-CAR-T-cells after co-culture with K562/ROR1 cells for 24 h. (C) Proliferation of ROR1 CAR-T-cells after stimulation with K562/ROR1 and JeKo-1 cells for 72 h. Stimulation with K562 cells is shown as a comparison in each histogram (gray graph). Data are representative of two independent experiments with T-cells prepared from different donors. Analysis of normalized values for cytokine production from purified CD4⁺ and CD8⁺ T-cells stimulated with K562/ROR1 or JeKo-1 cells showed that CD4⁺ T-cells produced significantly greater IFN- γ , TNF- α , and IL-2 than CD8⁺ T-cells.