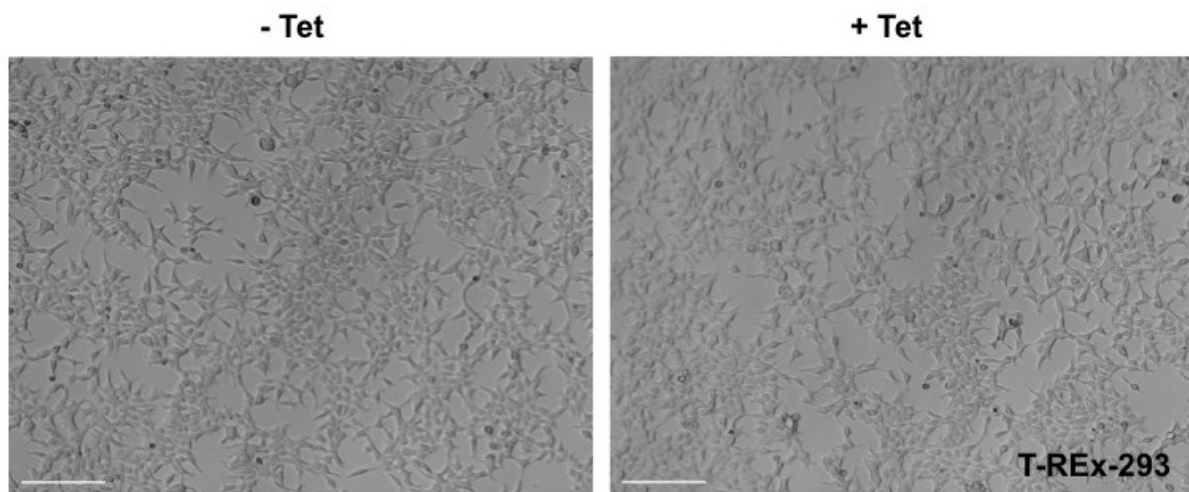


## 2- and 3-dimensional synthetic large-scale de novo patterning by mammalian cells through phase separation.

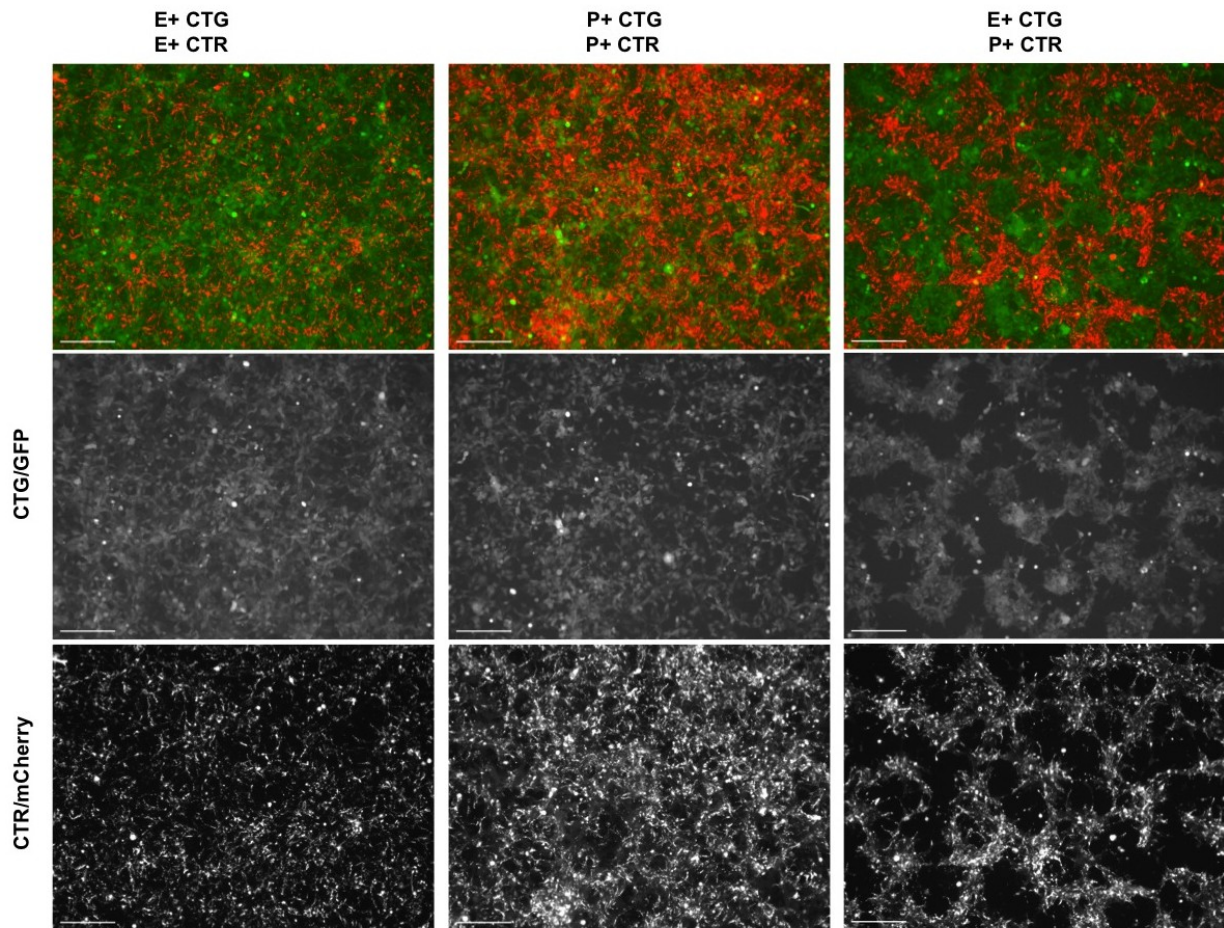
Elise Cachat, Weijia Liu, Kim C. Martin, Xiaofei Yuan, Huabing Yin, Peter Hohenstein & Jamie A. Davies.

### SUPPLEMENTARY FIGURES



#### Supplementary Figure 1

Wild-type T-Rex-293 cells with or without tetracycline induction. T-Rex-293 cells did not show morphological changes in response to 48 h culture in the presence of 1  $\mu\text{g}/\text{mL}$  tetracycline. Scale bars: 200  $\mu\text{m}$ .



### Supplementary Figure 2

Homomixes do not form patterns after tetracycline induction.

For each cadherin-expressing clone, cells were split in two subpopulations and marked with CellTracker CMFDA (Green, CTG) and CellTracker CM-Dil (red, CTR). Homomix cultures were set up after combining subpopulations expressing the same cadherin but marked with different colour dyes (i.e. E+CTG/E+CTR and P+CTG/P+CTR). After 48 h of culture under tetracycline induction, no patterns were observed in these homomixes in comparison to a heteromix (E+CTG/P+CTR) cultured under the same conditions.