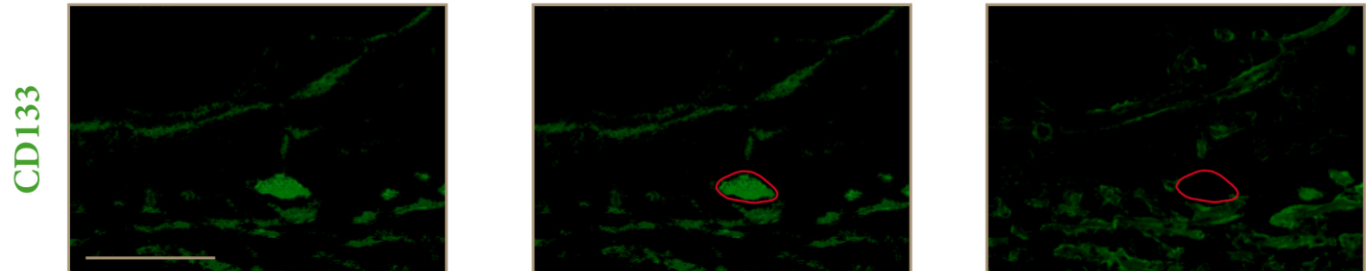


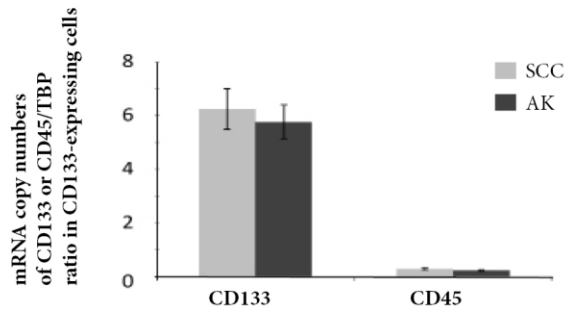
Donor-derived stem-cells and epithelial mesenchymal transition in squamous cell carcinoma in transplant recipients

Supplementary Material

A Laser-microdissection

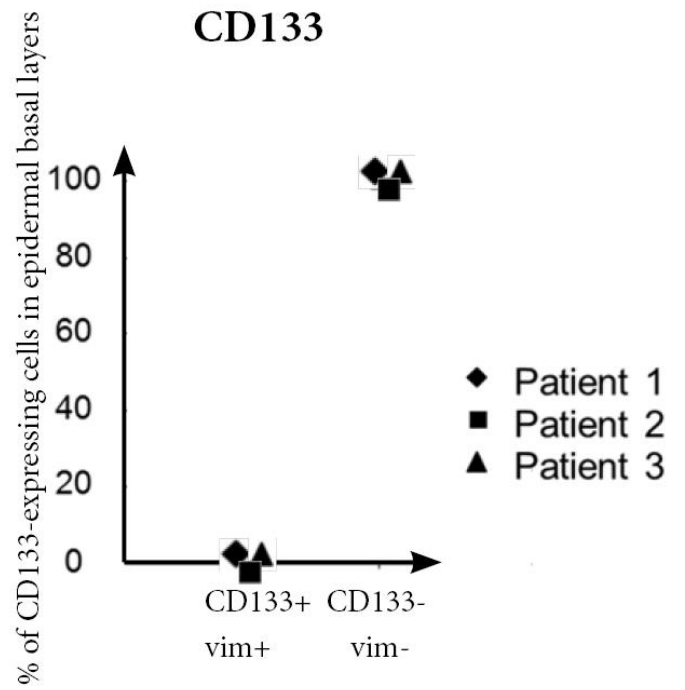
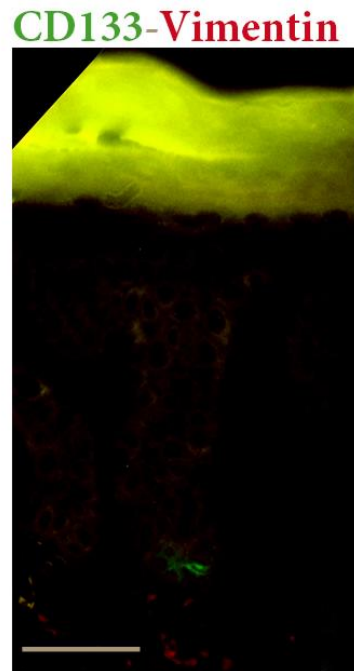


B



supplementary figure 1: Laser microdissection of a CD133-expressing epidermal cell (bar=30 μ m). Droplet digital PCR analyses show that laser-microdissected cells express CD133 (prominin 1) and not CD45

Actinic Keratosis



supplementary figure 2: Epidermal cells expressing CD133 but not vimentin in actinic keratoses