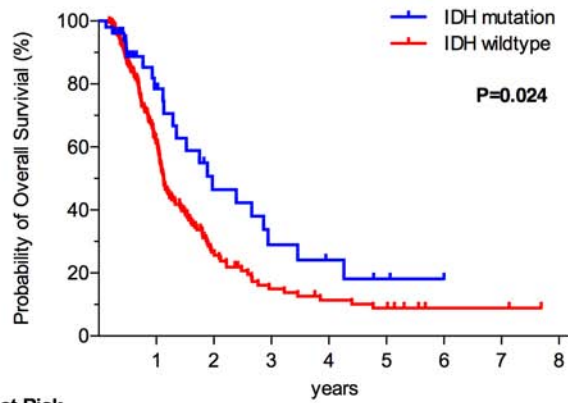


SUPPLEMENTARY FIGURES AND TABLES

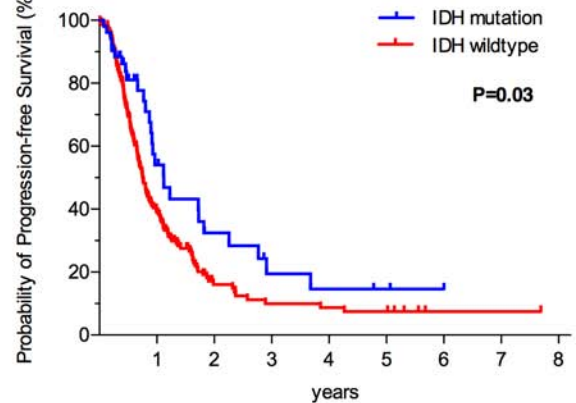
A



No. at Risk

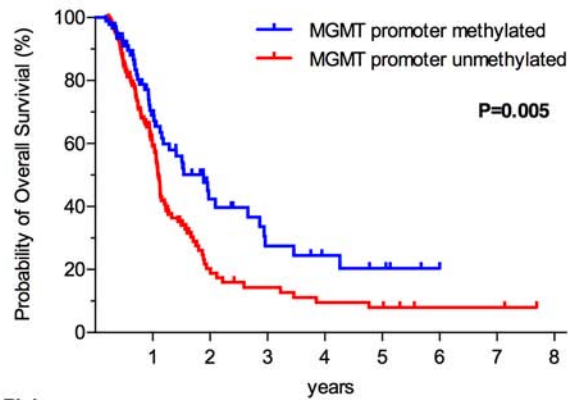
| | | | | | | | | | |
|----------|-----|----|----|----|---|---|---|---|---|
| Mutation | 52 | 23 | 12 | 6 | 4 | 2 | 1 | 0 | 0 |
| Wildtype | 213 | 96 | 24 | 12 | 9 | 7 | 2 | 2 | 0 |

B



| | | | | | | | | | |
|----------|-----|----|----|----|---|---|---|---|---|
| Mutation | 52 | 23 | 12 | 6 | 4 | 2 | 1 | 0 | 0 |
| Wildtype | 213 | 96 | 24 | 12 | 9 | 7 | 2 | 2 | 0 |

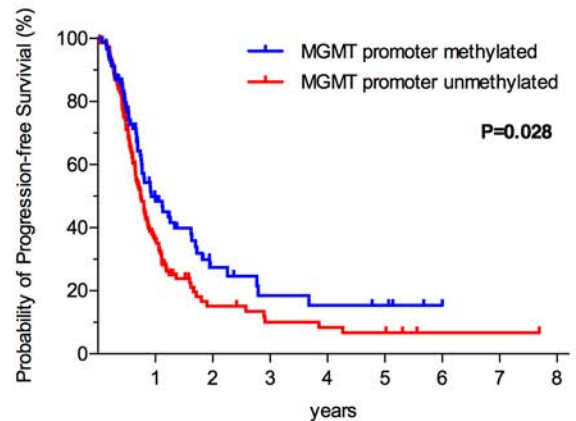
C



No. at Risk

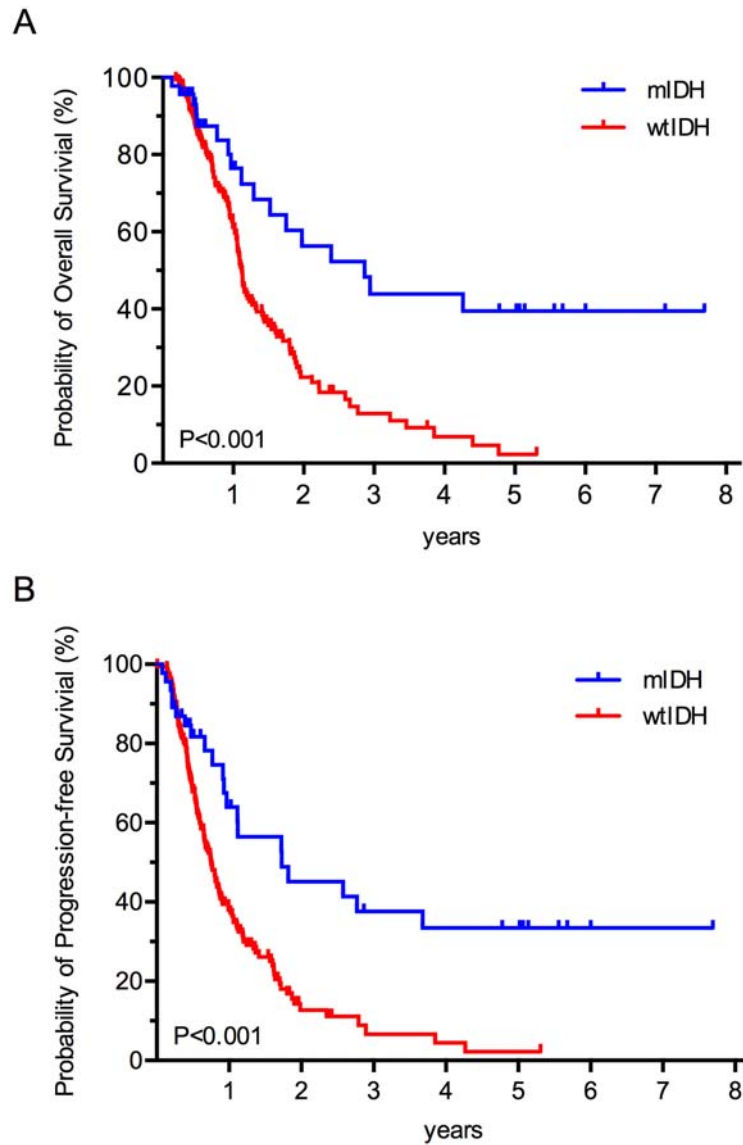
| | | | | | | | | | |
|--------------|-----|----|----|---|---|---|---|---|---|
| Methylated | 92 | 42 | 17 | 9 | 6 | 4 | 1 | 0 | 0 |
| Unmethylated | 146 | 61 | 14 | 9 | 6 | 5 | 2 | 2 | 0 |

D

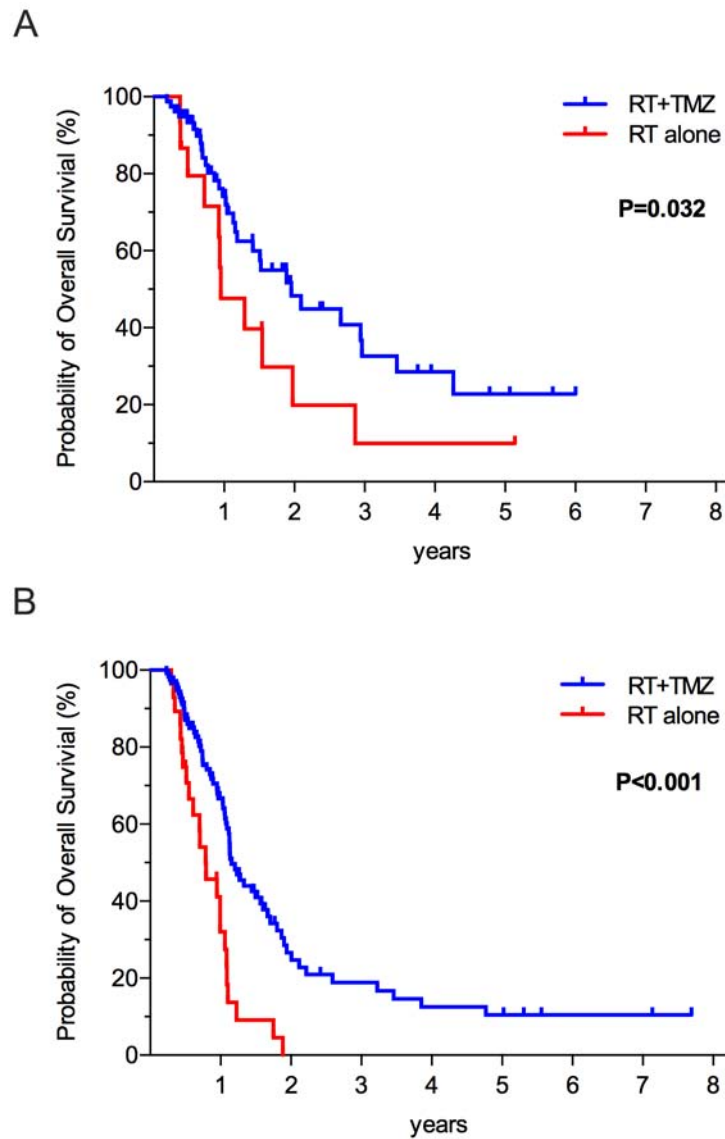


| | | | | | | | | | |
|--------------|-----|----|----|---|---|---|---|---|---|
| Methylated | 92 | 34 | 10 | 6 | 5 | 4 | 1 | 0 | 0 |
| Unmethylated | 146 | 38 | 10 | 6 | 5 | 4 | 1 | 1 | 0 |

Supplementary Figure S1: Kaplan–Meier curves showing that IDH mutation was prognostic of longer overall survival A. and progression-free survival B. among the GBM patients. Meanwhile, MGMT promoter methylation was also a prognostic factor for both longer overall survival C. and progression-free survival D. among GBM patients.



Supplementary Figure S2: A. The Kaplan–Meier estimates for overall survival indicated that the group of GBM patients with IDH1 mutation who underwent RT plus TMZ treatment exhibited a longer survival time than the patients with IDH mutation that received RT only treatment. **B.** The GBM patients with IDH wild type who underwent RT plus TMZ treatment also exhibited a better prognosis than those with IDH1 wild type receiving RT only.



Supplementary Figure S3: A. The Kaplan–Meier estimates for overall survival indicated that the group of GBM patients with MGMT promoter methylation who underwent RT plus TMZ treatment exhibited a longer survival time than the patients with MGMT promoter methylation that received RT only treatment. **B.** The GBM patients with unmethylated MGMT promoters who underwent RT plus TMZ treatment also exhibited a better prognosis than those with unmethylated MGMT promoters receiving RT only.

Supplementary Table S1: Survival According to Treatment

| Treatment group | Glioblastoma | | |
|--------------------|--------------|--------------|------|
| | Total | RT/TMZ → TMZ | RT |
| No. of patients | 274 | 229 | 45 |
| Median OS (month) | 14.5 | 17.8 | 11.4 |
| at 6-month (%) | 85 | 89 | 70 |
| at 1-year (%) | 65 | 69 | 34 |
| at 3-year (%) | 17 | 22 | 3 |
| at 5-year (%) | 10 | 12 | 3 |
| Median PFS (month) | 9.8 | 10.7 | 6.5 |
| at 6-month (%) | 67 | 71 | 47 |
| at 1-year (%) | 39 | 43 | 20 |
| at 3-year (%) | 11 | 13 | 4 |
| at 5-year (%) | 8 | 9 | 4 |

Supplementary Table S2: Survival According to IDH, MGMT and Treatment

| MGMT | IDH | Treatment group | No. of patients | Median OS (days) | P value | Median PFS (days) | P value |
|------------------------------------|---------------------|-----------------|-----------------|------------------|---------|-------------------|---------|
| MGMT promoter methylation | IDH mutation | RT+TMZ | 26 | 1074 | 0.082 | 824 | 0.065 |
| | | RT alone | 6 | 720 | | 409 | |
| | IDH wildtype | RT+TMZ | 46 | 514 | 0.04 | 296 | 0.061 |
| | | RT alone | 8 | 338 | | 157 | |
| MGMT promoter unmethylation | IDH mutation | RT+TMZ | 14 | 1080 | NA | 365 | NA |
| | | RT alone | 1 | NA | | NA | |
| | IDH wildtype | RT+TMZ | 101 | 449 | <0.001 | 292 | 0.001 |
| | | RT alone | 27 | 287 | | 239 | |