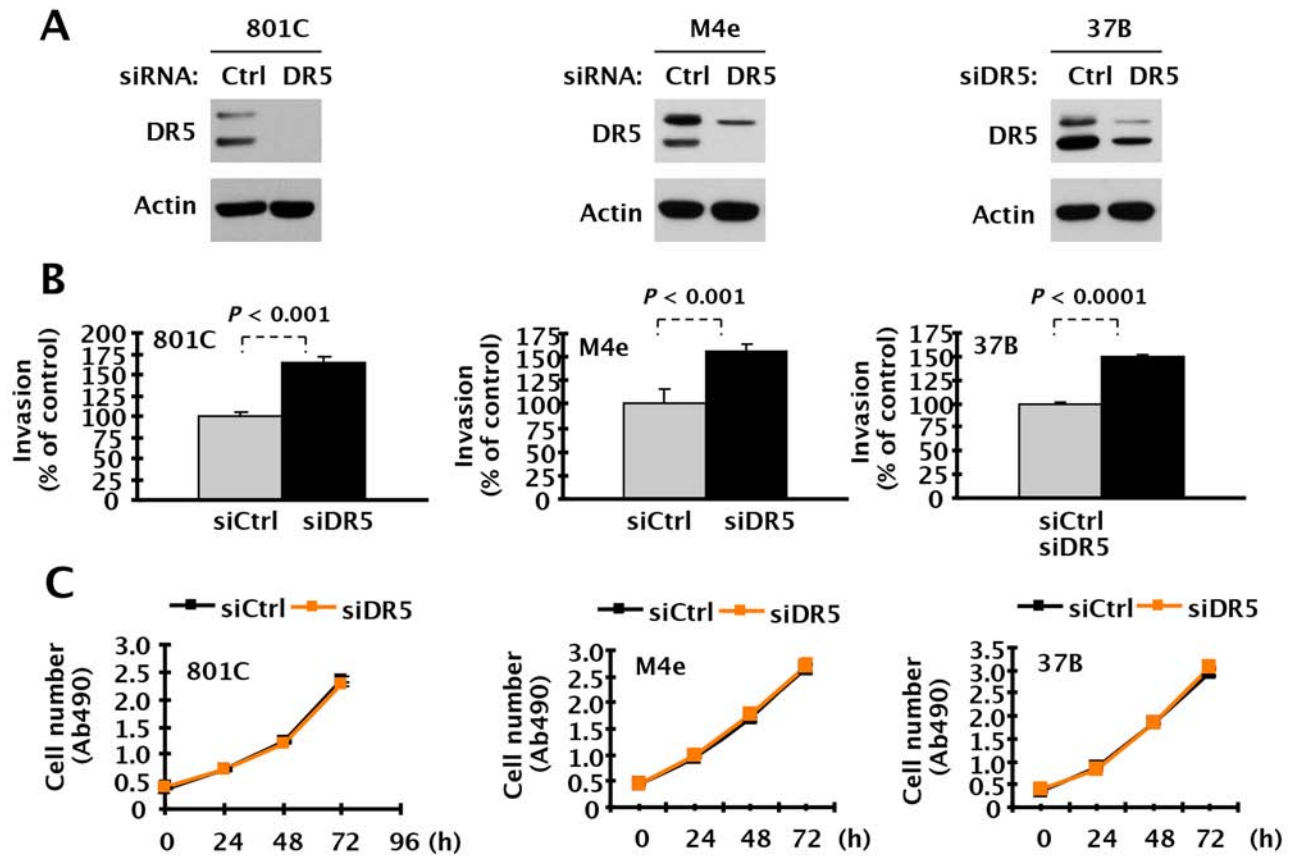


## SUPPLEMENTARY FIGURE



**Supplementary Figure S1: DR5 knockdown increases invasion of cancer cells without affecting cell growth.** 801C, M4e or 37B cells transiently transfected with control (Ctrl) or DR5 siRNA were plated in 12-well plates for evaluating DR5 expression with Western blotting **A**, in the Matrigel invasion chambers for invasion assay **B**, and in 96-well plates for cell growth measurement with the MTS assay **C**, after approximately 48 h incubation. The data are means  $\pm$  SDs of triplicate determinations.