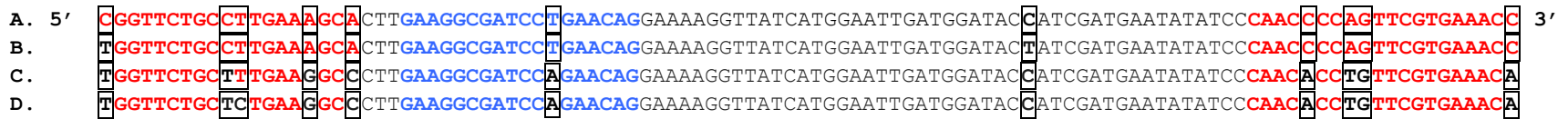


Figure S2. *Lactobacillus* species tuf-gene alignment used to design *Lactobacillus rhamnosus* specific tuf-gene assay



Taxonomic Key

- A. *Lactobacillus rhamnosus* GG (ATCC 53103, NC_017482.1), *L. rhamnosus* LOCK908 (NC_017491.1), *L. rhamnosus* ATCC 8530 (NC_017491.1), *L. rhamnosus* LMS2-1, (NZ_GG692960.1), *L. rhamnosus* Lc 705 (NC_013199.1)
- B. *L. rhamnosus* LOCK900, (NC_021723.1)
- C. *L. casei* ATCC 334 (NC_008526.1)
- D. *L. paracasei* subsp. *paracasei* 8700:2 (NC_022112.1), *L. casei* LOCK919, (NC_021721.1), *L. casei* W56, (NC_018641.1), *L. casei* BD-II, (NC_017474.1), *Lactobacillus casei* LC2W (NC_017473.1), *Lactobacillus paracasei* subsp. *paracasei* ATCC 25302 (NZ_GG670152.1), *Lactobacillus casei* str. Zhang (NC_014334.1), *Lactobacillus casei* BL23 (NC_010999.1)

Forward and reverse primer sequences are indicated in red, the probe sequence in blue. Mismatches are indicated as **N**.

Forward-*L. rhamnosus* tuf -222F: CGGTTCTGCCTTGAAAGCA
 Reverse-*L.rhamnosus*tuf-327R: GGTTTCACGAACTGGGGTTG
 Probe-*L.rhamnosus* tuf-261revT(MGB): CTGTTTCAGGATCGCCTTC