

Supporting Information

Melampodium leucanthum, a Source of Cytotoxic Sesquiterpenes with Antimitotic Activities

Andrew J. Robles,[†] Jiangnan Peng,^{*,†,‡,⊥} Rachel M. Hartley,^{†,⊥} Brigitte Lee,[†] and Susan L. Mooberry^{*,†,‡,§}

[†]Department of Pharmacology, [‡]Cancer Therapy & Research Center, and [§]Department of
Medicine, The University of Texas Health Science Center at San Antonio, San Antonio, Texas
78229-3900, United States

Table of Contents

Fig. S1	Concentration-response curves for (1)	Page S3
Fig. S2	¹ H and COSY NMR spectra of meleucanthin (1)	Page S4
Fig. S3	HSQC and HMBC spectra of meleucanthin (1)	Page S5

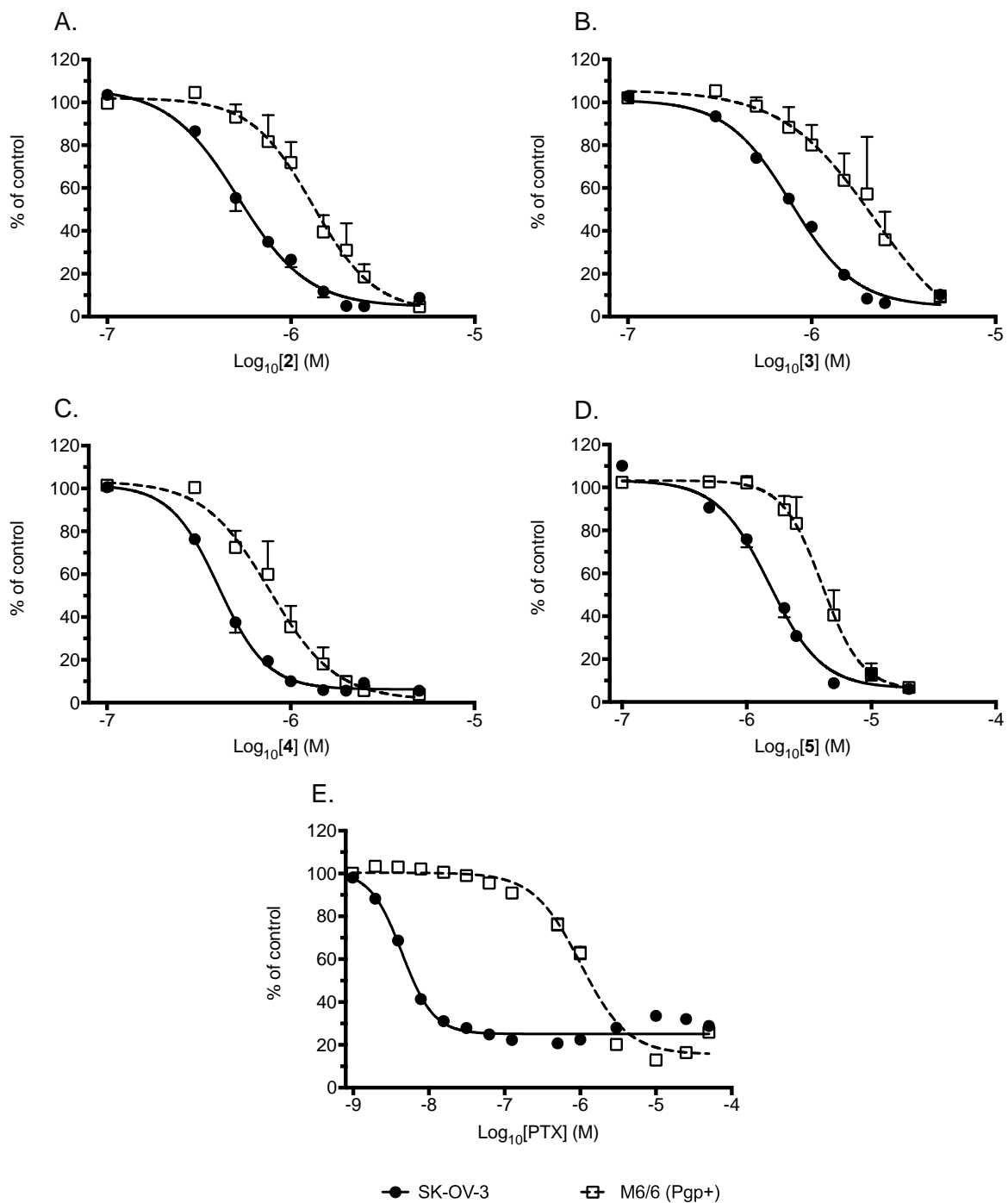


Fig S1. Concentration-response curves for growth inhibition of SK-OV-3 and SK-OV-3/MDR-1-M6/6 (M6/6) cells by compounds 2–5 or paclitaxel (PTX), measured with the SRB assay. Results represent n = 2–9 independent experiments, with each concentration tested in triplicate.

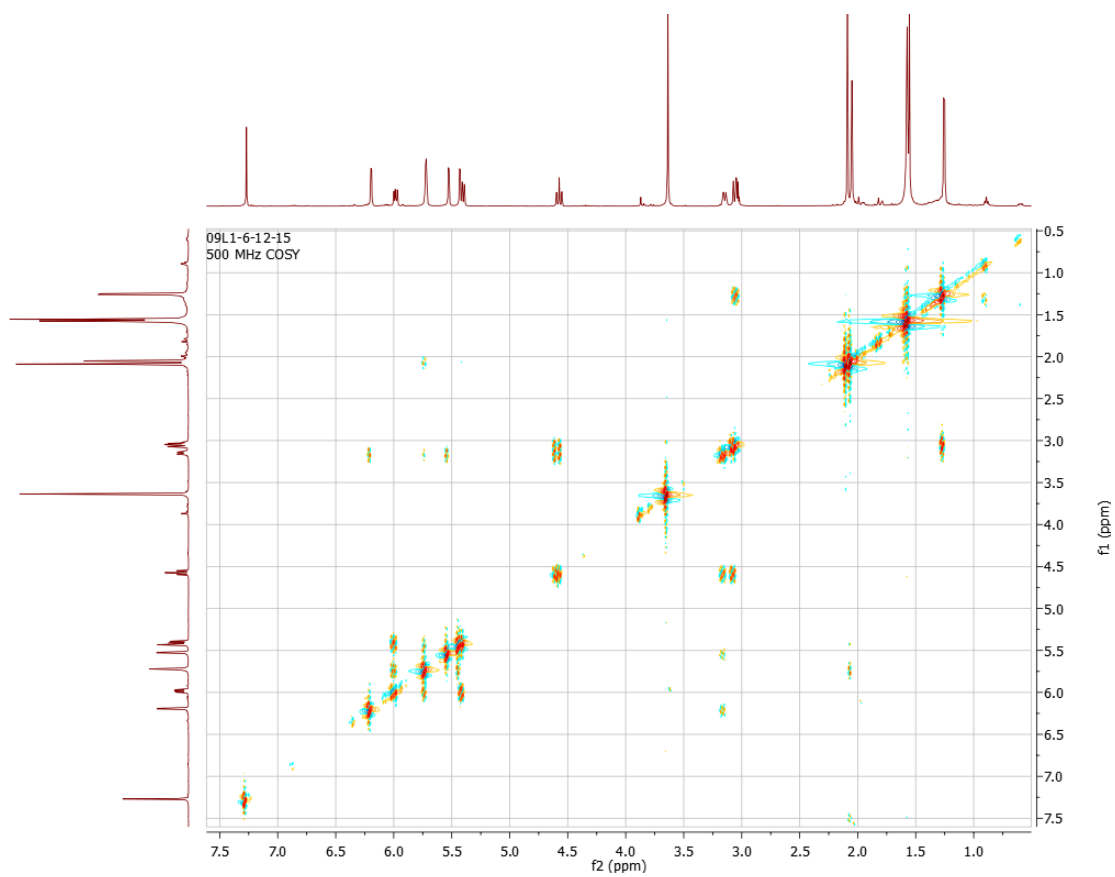
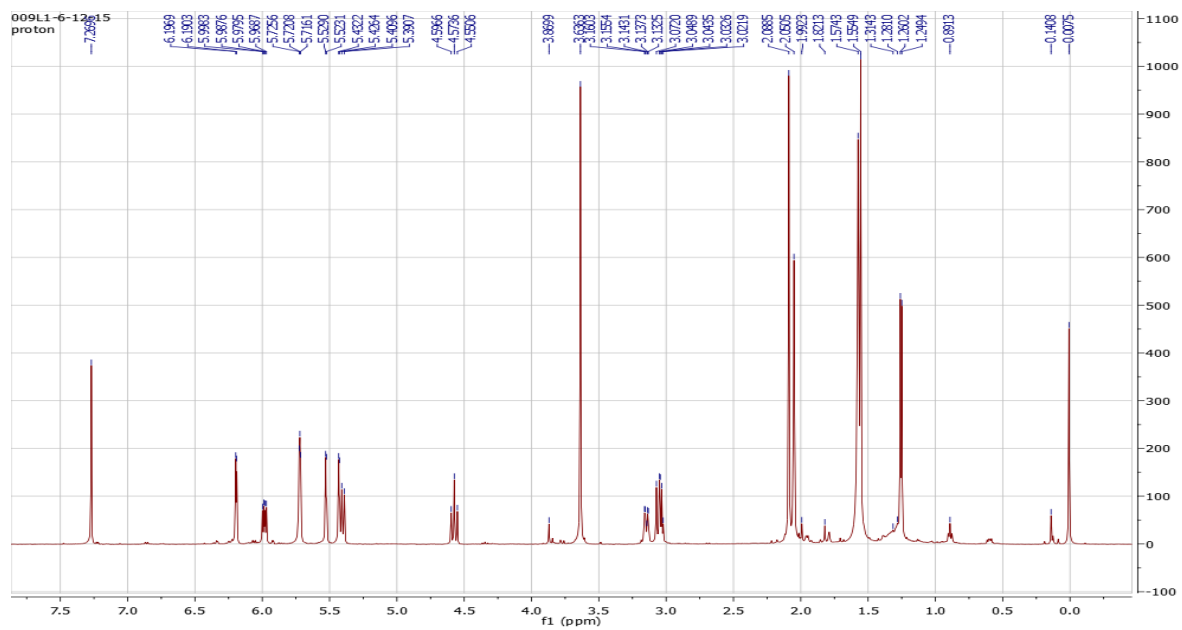


Fig S2. ^1H NMR (Top) and COSY (Bottom) spectra for meleucanthin (**1**).

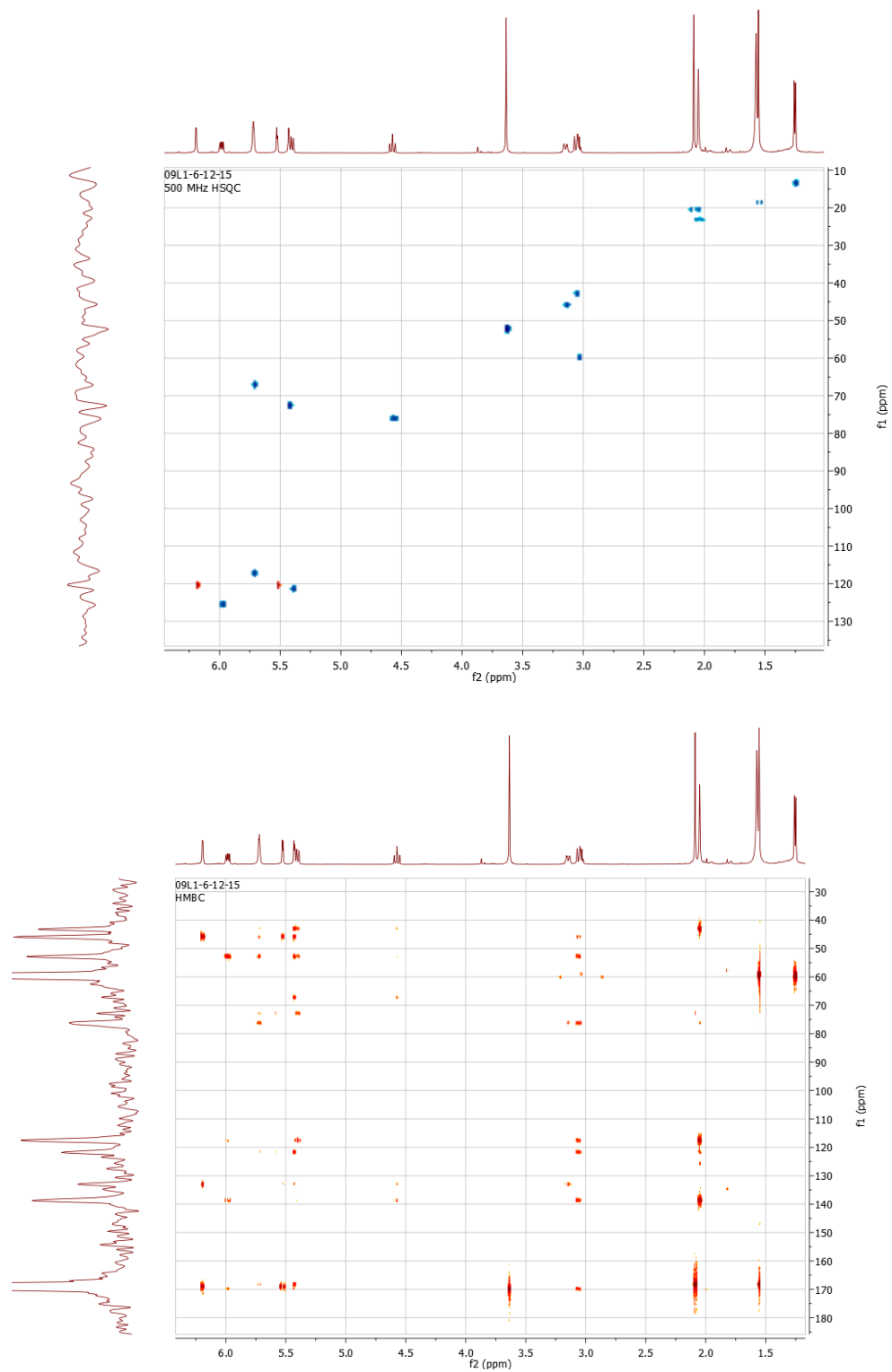


Fig S2. HSQC NMR (Top) and HMBC (Bottom) spectra for meleucanthin (**1**).