

Supplementary Material

8-Hydroxyquinoline-Based Inhibitors of the Rce1 Protease Disrupt Ras Membrane Localization in Human Cells

Idrees Mohammed,^{a,†} Shahienaz E. Hampton,^{a,†} Louise Ashall,^{a,†} Emily R. Hildebrandt,^{c,†} Robert A. Kutlik,^b Surya P. Manandhar,^c Brandon J. Floyd,^b Haley E. Smith,^a Jonathan K. Dozier,^d Mark D. Distefano,^d Walter K. Schmidt,^c and Timothy M. Dore^{a,b,*}

^aNew York University Abu Dhabi, PO Box 129188, Abu Dhabi, United Arab Emirates

^bDepartment of Chemistry, University of Georgia, Athens, GA 30602

^cDepartment of Biochemistry & Molecular Biology, University of Georgia, Athens, GA 30602

^dDepartment of Chemistry, University of Minnesota, Minneapolis, MN 55455

Table of Contents

Figure S1. Rce1 inhibitor toxicity in human cells	S2
Figure S2. ORTEP diagram for compound 28	S3
Figure S2. ORTEP diagram for compound 36	S3
Proteolysis assay IC ₅₀ determinations for selected compounds	S4
¹ H and ¹³ C NMR Spectra	S6

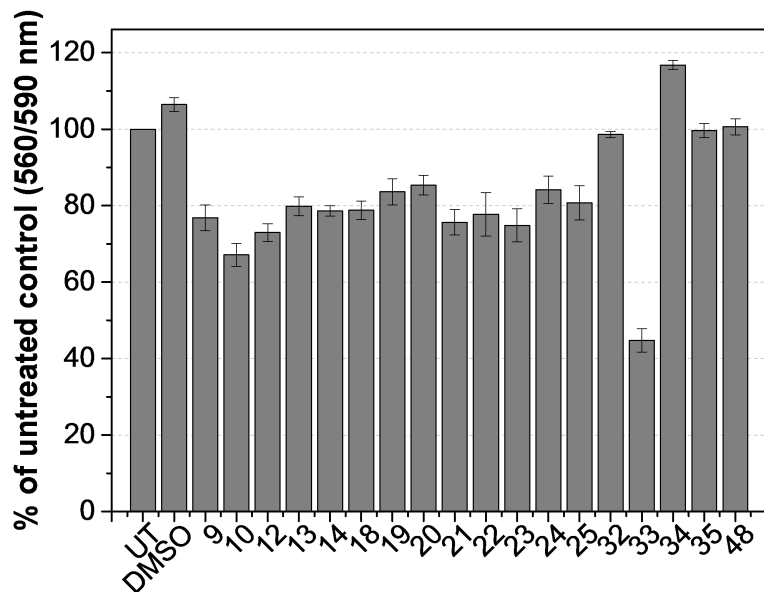


Figure S1. Rce1 inhibitor toxicity in human cells. Compounds were added to HCT-116 cells at 25 μ M then incubated for 20 h. U= untreated, DMSO= DMSO (0.4%) treated cells. Cell viability was measured using the CellTiter-Blue assay (Promega). Average of three independent experiments. Error bars indicate SEM.

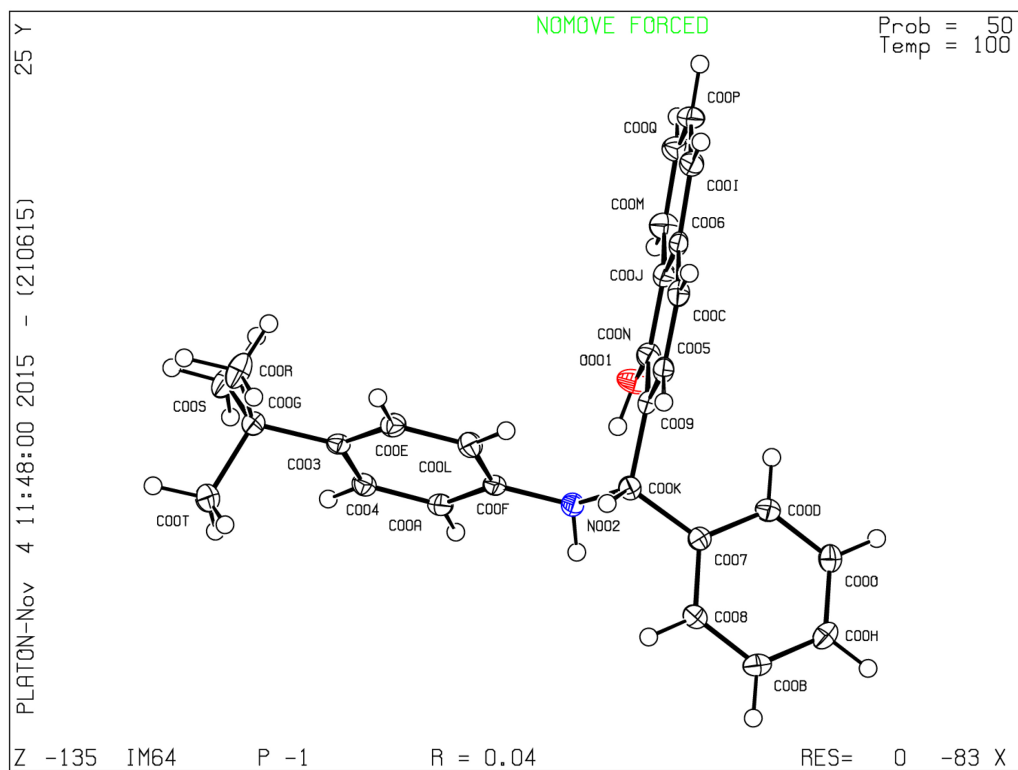


Figure S2. ORTEP diagram of compound **28** generated by uploading .cif file at <http://checkcif.iucr.org/>

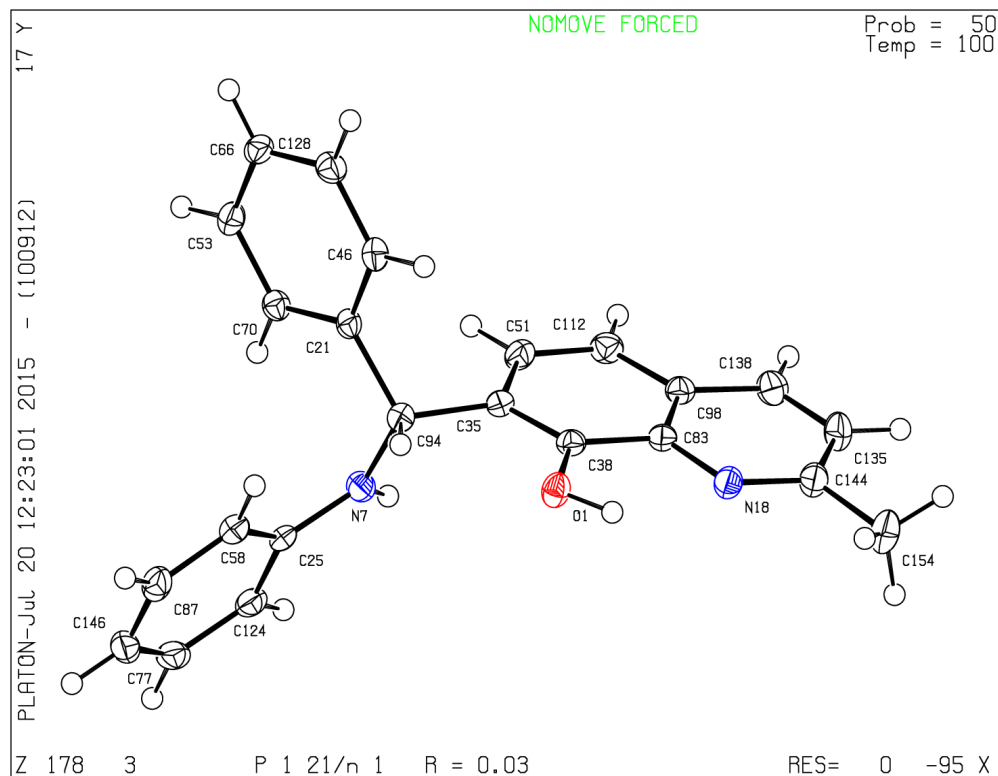
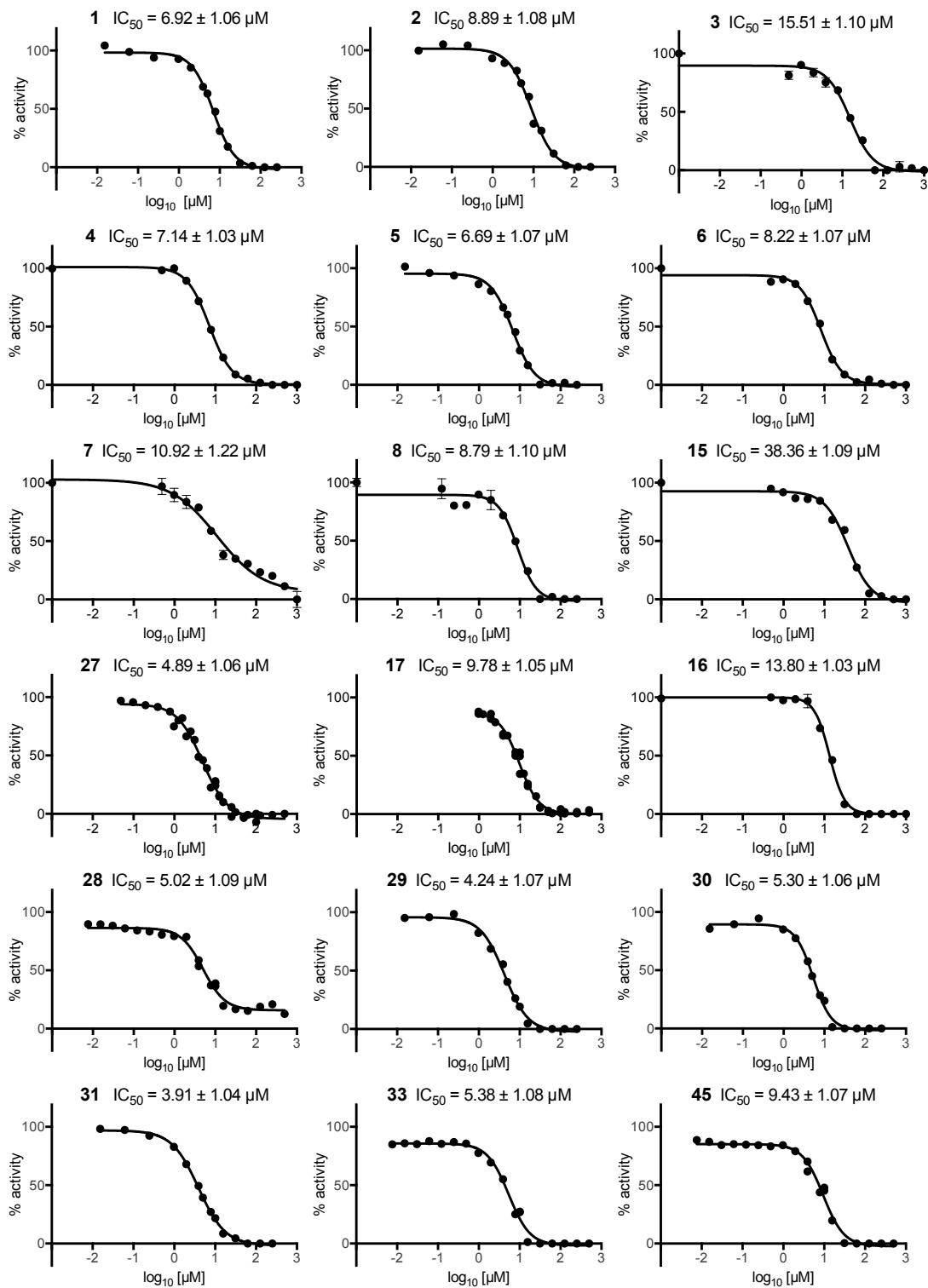
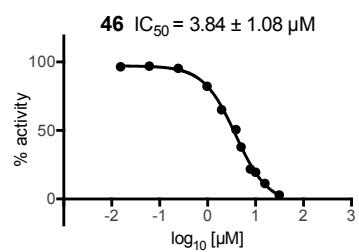


Figure S3. ORTEP diagram of compound **36** generated by uploading .cif file at <http://checkcif.iucr.org/>

Proteolysis assay IC₅₀ determinations for selected compounds



Proteolysis assay IC₅₀ determinations for selected compounds (continued)



^1H and ^{13}C NMR Spectra

