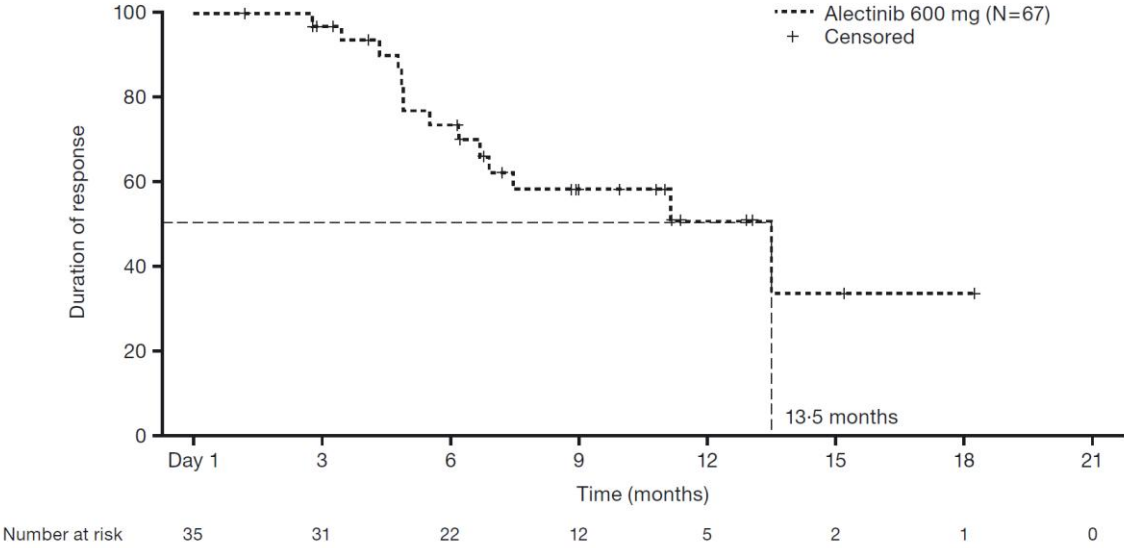


**Phase 2 prospective analysis of alectinib in *ALK*-positive, crizotinib-resistant non-small-cell lung cancer**

All investigators in the phase 2 NCT01871805 alectinib study

<b>Principal Investigator</b>	<b>Institution</b>	<b>Number of patients recruited</b>
Alice Shaw	Massachusetts General Hospital, Boston, MA	9
Sai-Hong Ou	University of California Irvine, Orange, CA	9
Gregory Riely	Memorial Sloan-Kettering Cancer Center, New York City, NY	6
Jeremy Centar	Oregon Health and Science University, Portland, OR	6
Leena Gandhi	Dana Farber Cancer Institute, Boston, MA	6
Howard West	Swedish Cancer Institute, Seattle, WA	5
Ross Camidge	University of Colorado Cancer Center, Aurora, CO	5
Mark Socinski	University of Pittsburgh Cancer Pavillion, Pittsburgh, PA	5
Alberto Chiappori	Moffitt Cancer Center, Tampa, FL	4
Tarek Mekhail	Florida Hospital Cancer Institute, Orlanda, FL	4
Ticiana Leal	University of Wisconsin, Madison, WI	3
Keisuke Shirai	MUSC Hollings Cancer Center, Charleston, SC	3
Bo Chao	Ohio State University Comprehensive Cancer Center	3
Jennifer Ejen Tseng	UF Health Orlando, Orlando, FL	2
Hossein Borghaei	Fox Chase Cancer Center, Philadelphia, PA	2
Lyudmila Bazhenova	UCSD Moores Cancer Center, La Jolla, CA	2
Jonathan Goldman	UCLA, Los Angeles, CA	2
Kathryn Gold	MD Anderson Cancer Center, Houston, TX	2
Victor Cohen	McGill University, Sir Mortimer B Davis Jewish General Hospital, Montreal, Quebec	1
Shirish Gadgeel	Wayne State University and Karmanos Cancer Center, Detroit, MI	1
Hongbin Chen	Roswell Park Cancer Institute, Buffalo, NY	1
Jimmy Ruiz	Wake Forest University Health Sciences, Winston-Salem, NC	1
Laurie Carr	National Jewish Health, Denver, CO	1
Russell Devore III	Center for Biomedical Research, Knoxville, TN	1
Neil Belman	St Luke's Hospital, Bethlehem, PA	1
Edward Santos	Lynn Regional Cancer Center West, Boca Raton, FL	1
Chandra Belani	Penn State Hershey Cancer Institute, Hershey, PA	1

**Supplementary Figure S1: Duration of response**



**Supplementary Figure S2: Patient reported outcomes. (A) Global health status (B) Fatigue.**  
 Shown in each plot are means with 95% CIs.

