

D- β -aspartyl residue exhibiting uncommon high resistance to spontaneous peptide bond cleavage

Kenzo Aki and Emiko Okamura

Supplement

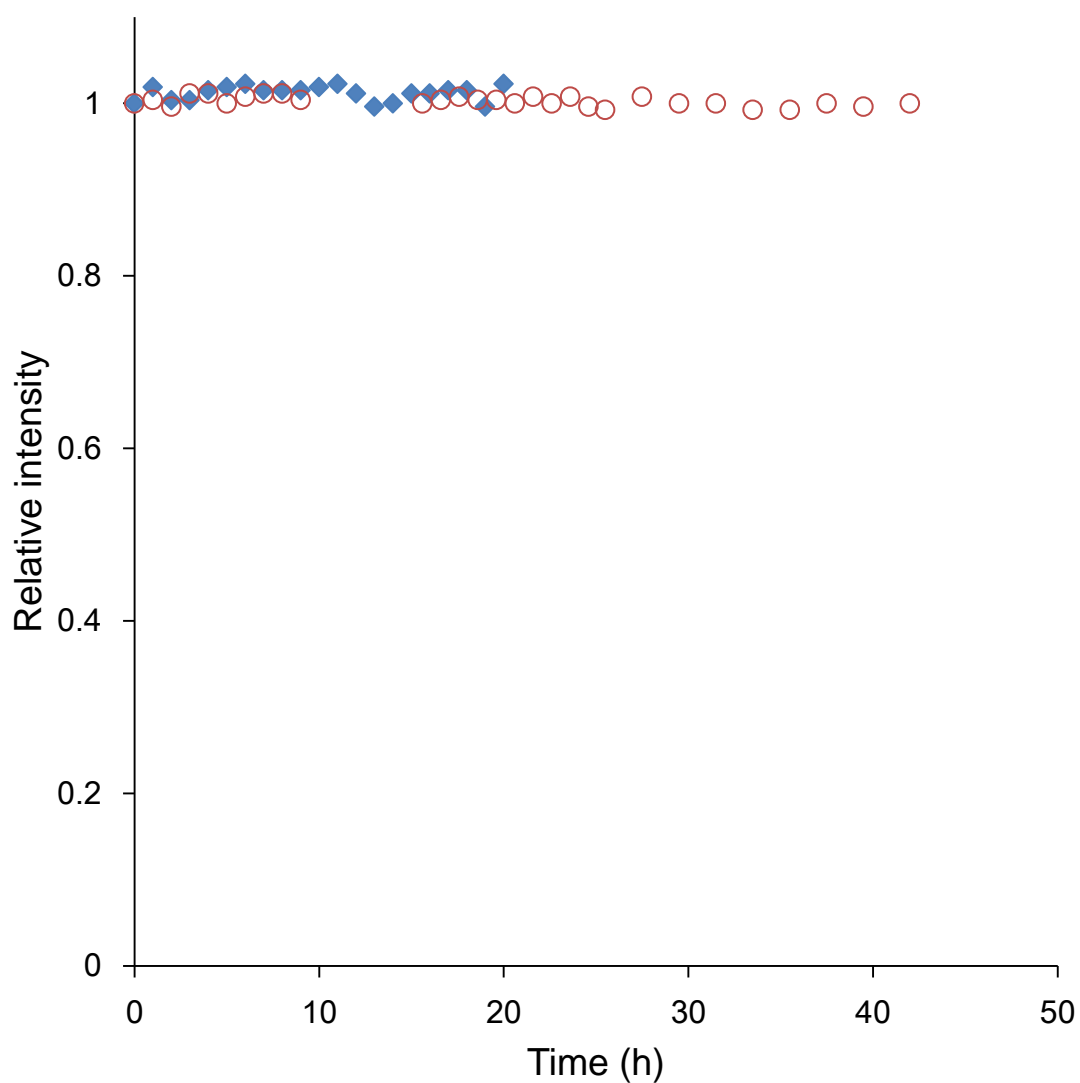


Figure S1. Real-time signal intensity change of Phe53 ring proton in α A-crystallin fragment, S⁵¹LFRTVLD⁵⁸SG⁶⁰ during the bond cleavage reaction at L- α - (◆) and D- β -Asp58 (○). The intensities are the ones relative to the initial value at time 0.