

Effect of TGF- β 1 on the Migration and Recruitment of Mesenchymal Stem Cells after Vascular Balloon Injury: Involvement of Matrix Metalloproteinase-14

Wei Zhao^{#1}, Chengyan Wang^{#1}, Ruixue Liu¹, Cuilei Wei¹, Juncang Duan², Kejian Liu², Shugang Li³, Hong Zou¹, Jin Zhao¹, Lianghai Wang¹, Yan Qi¹, Weihua Liang¹, Jinfang Jiang¹, Wenjie Zhang¹, Lijuan Pang^{*1}, Feng Li^{*1}

¹Department of Pathology and Key Laboratory of Xinjiang Endemic and Ethnic Diseases (Ministry of Education), Shihezi University School of Medicine, 59 North 2nd Road, Shihezi, Xinjiang 832002, China

²Department of Cardiology, the First Affiliated Hospital of Shihezi city, 45 North 3rd Road, Shihezi, Xinjiang 832002, China

³Department of Public Health, Shihezi University School of Medicine, 59 North 2nd Road, Shihezi, Xinjiang 832002, China

#Co-first authors:

Wei Zhao, E-mail: 18599046455@163.com

Chengyan Wang, E-mail: 513935508@qq.com

Both authors contributed equally to this work

*Corresponding authors:

Lijuan Pang, MD, PhD E-mail: ocean123456@163.com

Feng Li, MD, PhD E-mail: lifeng7855@126.com Fax: +86-0993-205-713

Supplement Figure Legends

Supplement Figure 1. Immunohistochemical analysis of Ki-67, CD31, and CD34 expression in injured arteries.

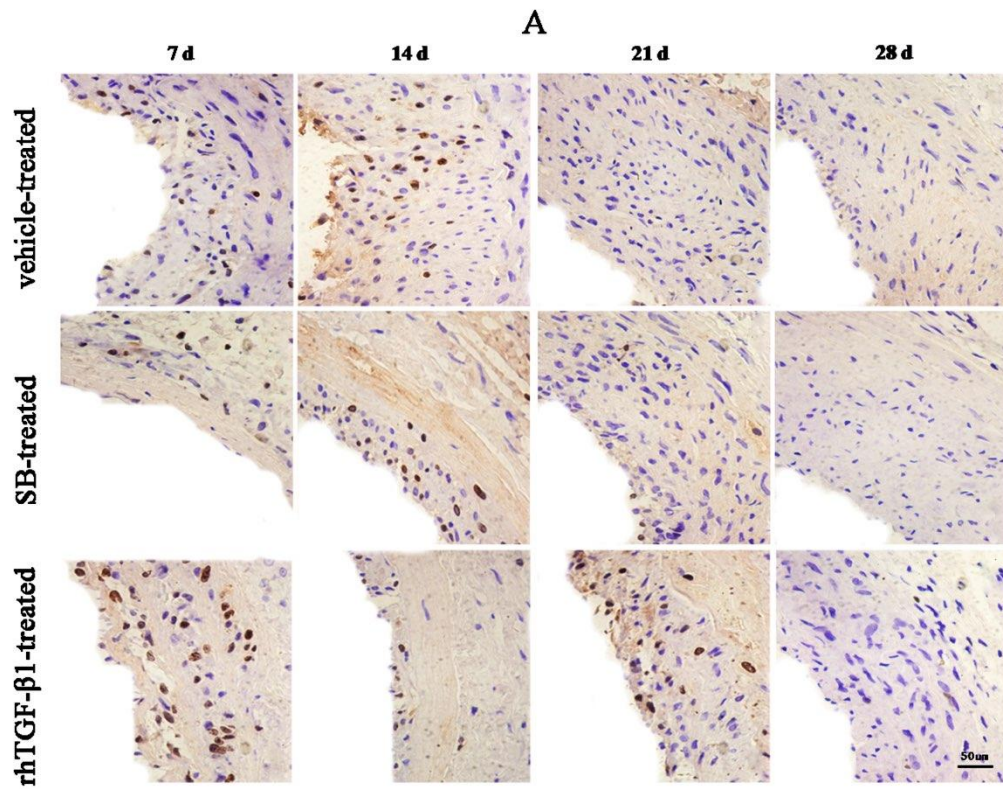
A–C: Representative images of Ki-67(A), CD31 (B), and CD34 (C) expression. Scale bar, 50 μ m.

Supplement Figure 2. Immunohistochemical analysis of Calponin, SMA, and Vimentin expression in injured arteries.

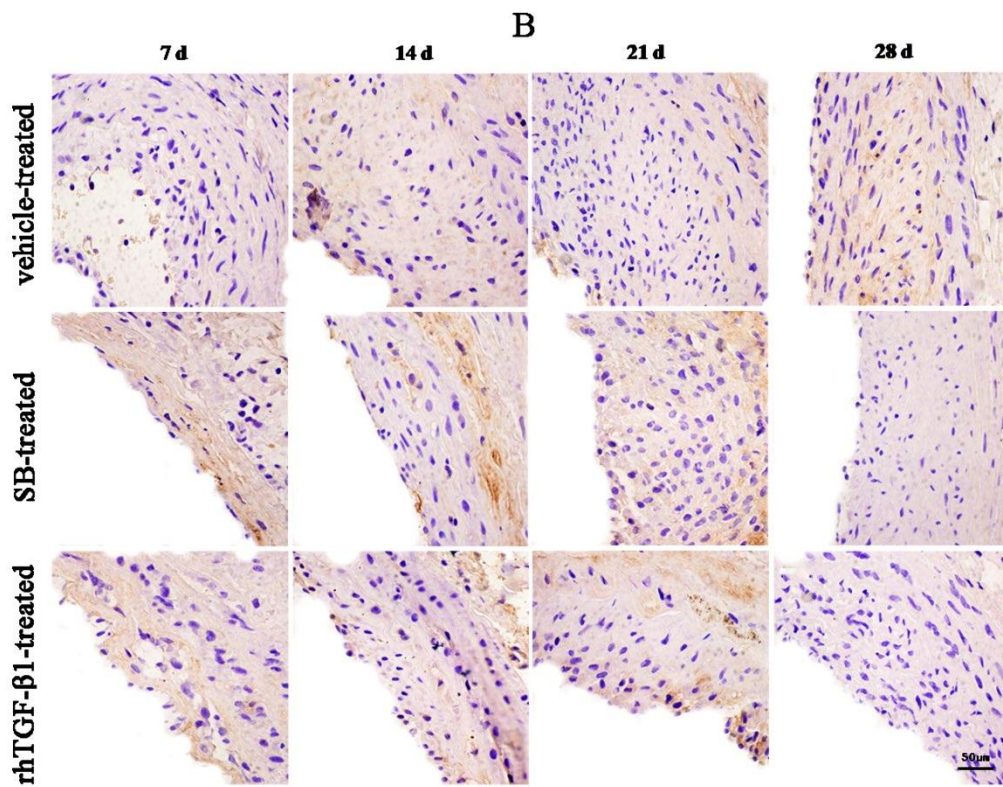
A. C: Representative images of Calponin (A), SMA (B), and Vimentin (C). Scale bar, 50 μ m.

Supplement Figure 3. MMP-14 expression after arterial injury.

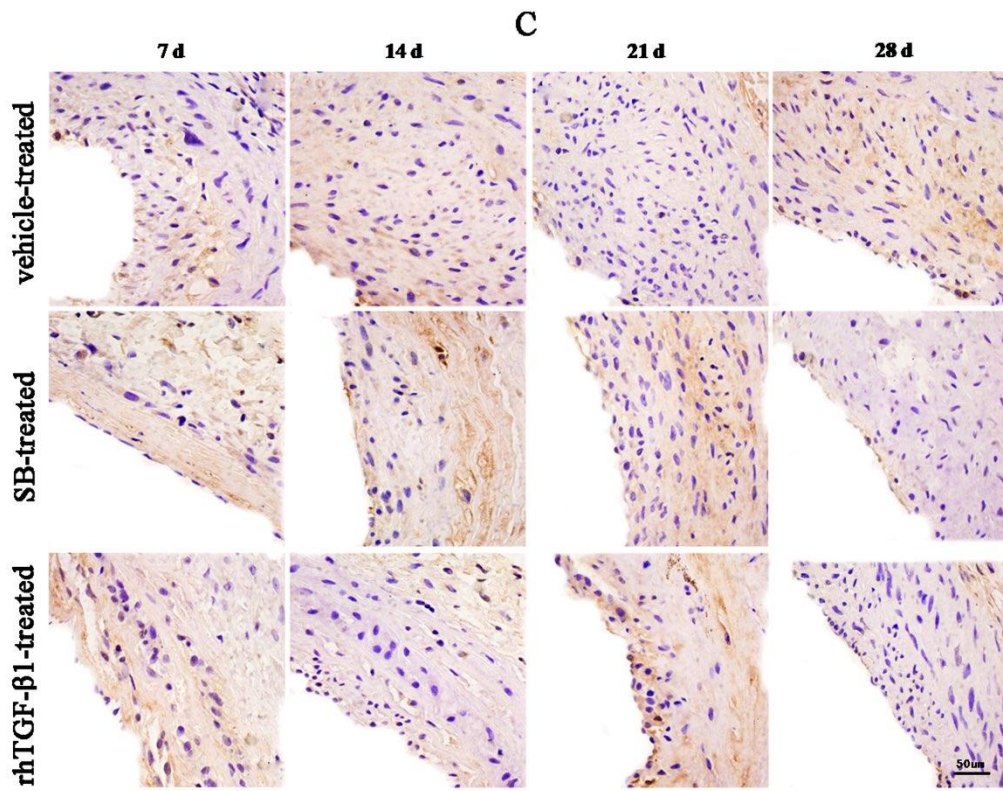
Representative images of MMP-14 expression in injured arteries, as detected by immunohistochemistry. Scale bar, 50 μ m.



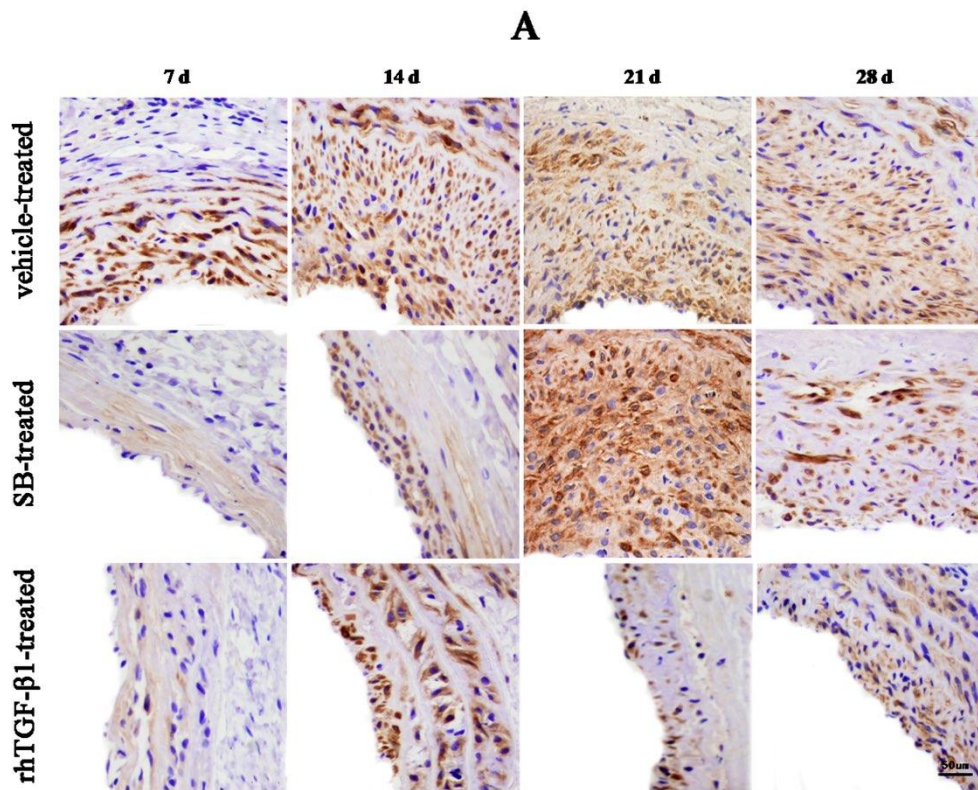
Supplement Fig. 1A (Ki-67)



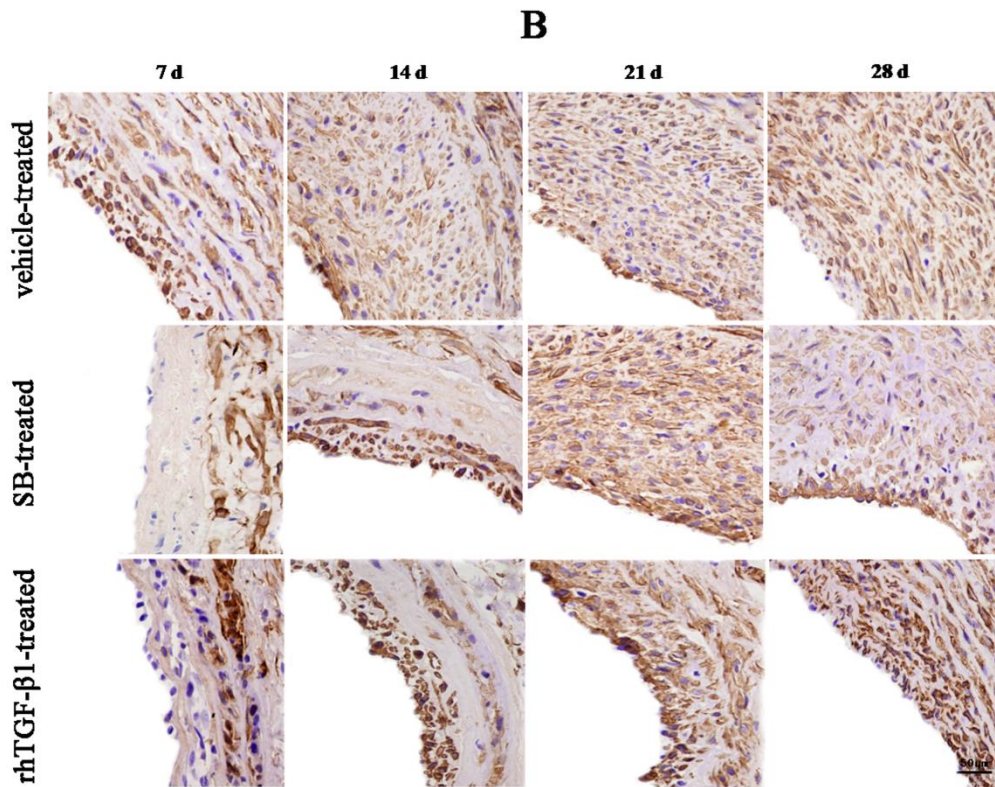
Supplement Fig. 1B (CD31)



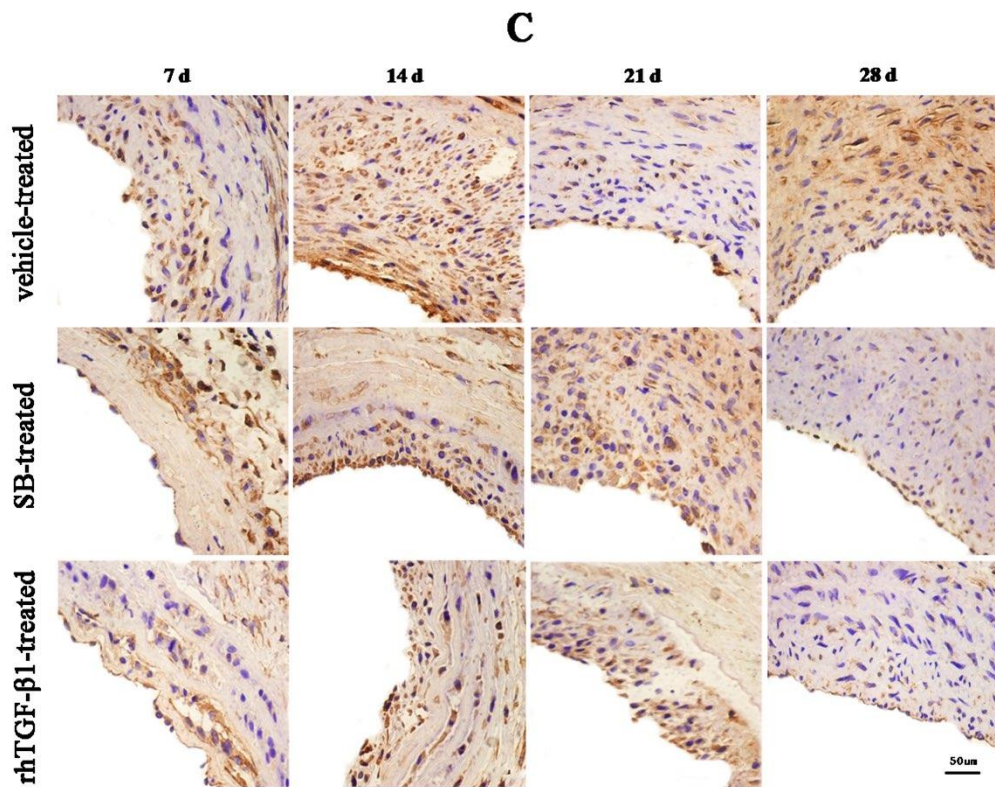
Supplement Fig. 1C (CD34)



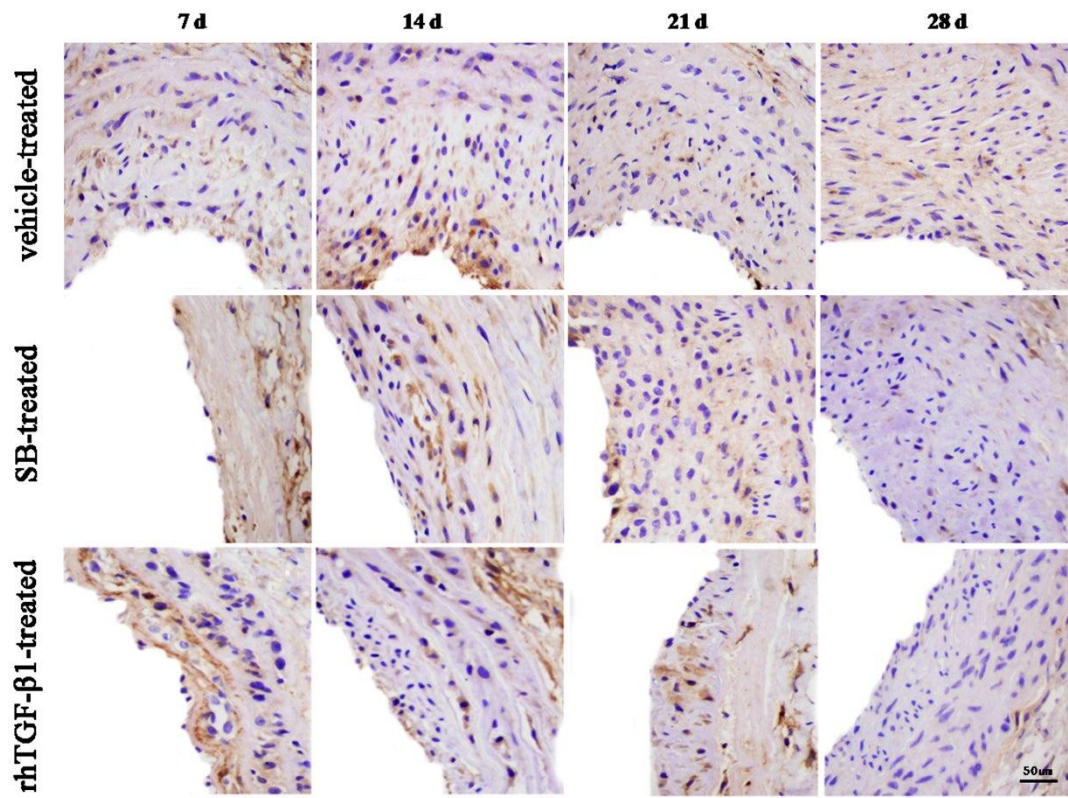
Supplement Fig. 2A (Calponin)



Supplement Fig. 2B (SMA)



Supplement Fig. 2C (Vimentin)



Supplement Fig. 3 (MMP-14)

Figure 2A

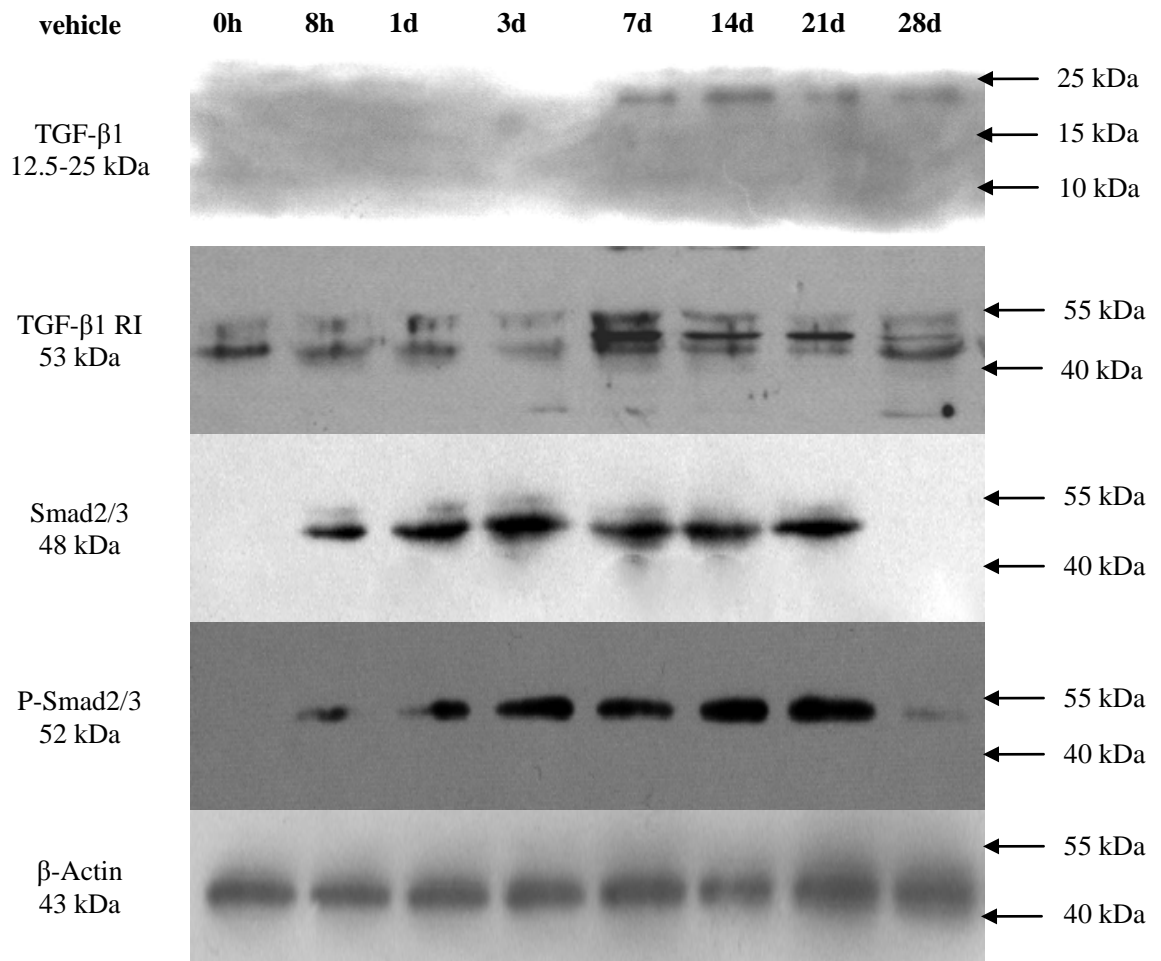


Figure 2B

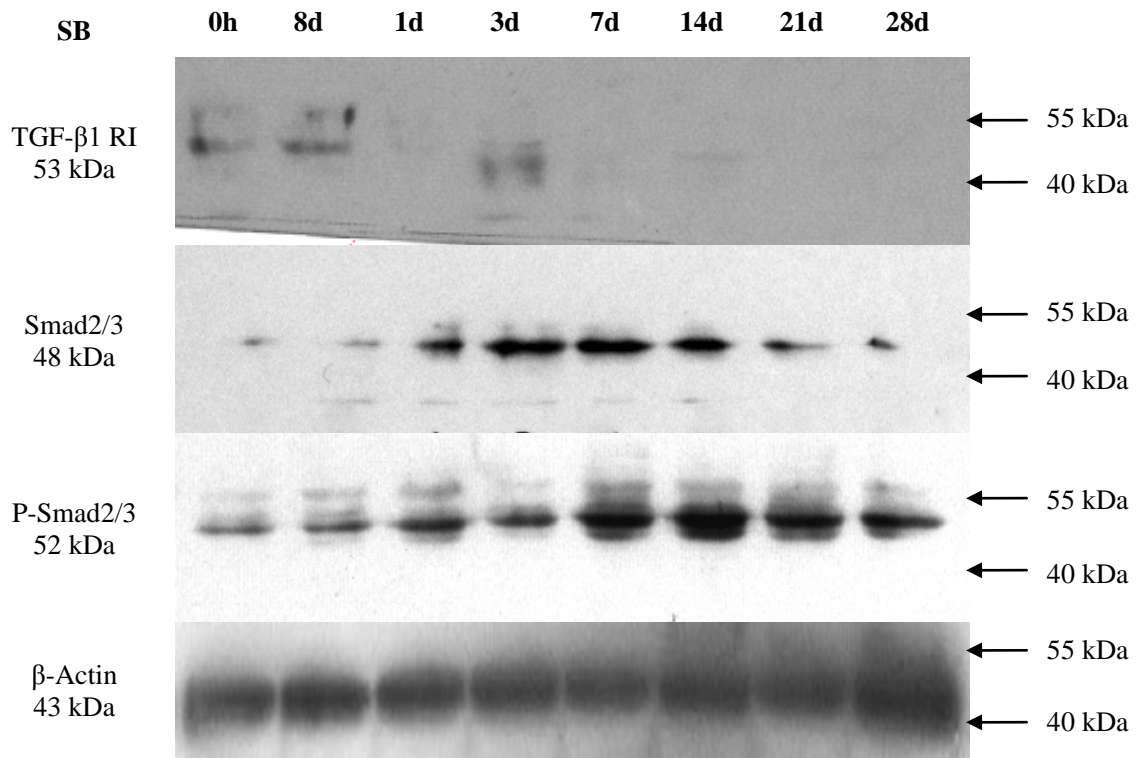


Figure 2C

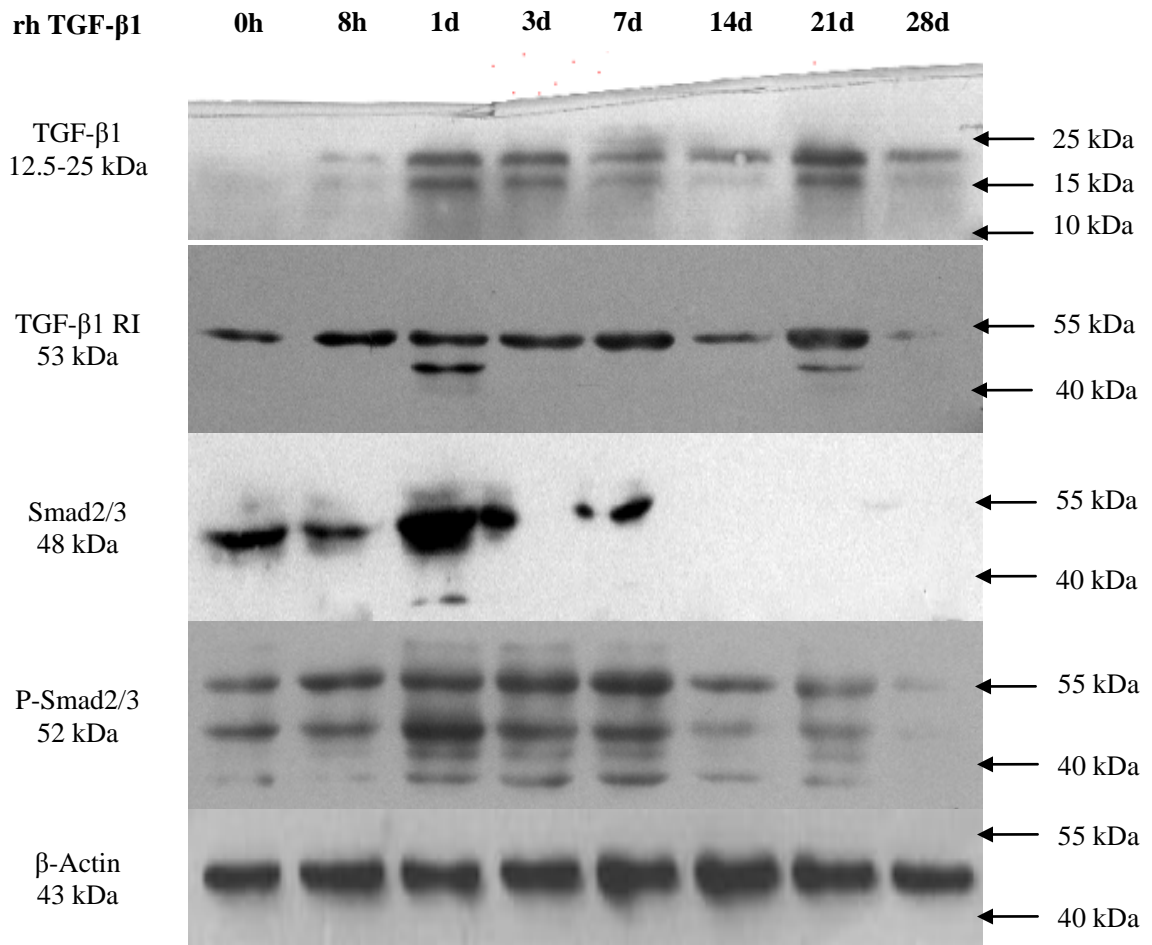


Figure 5

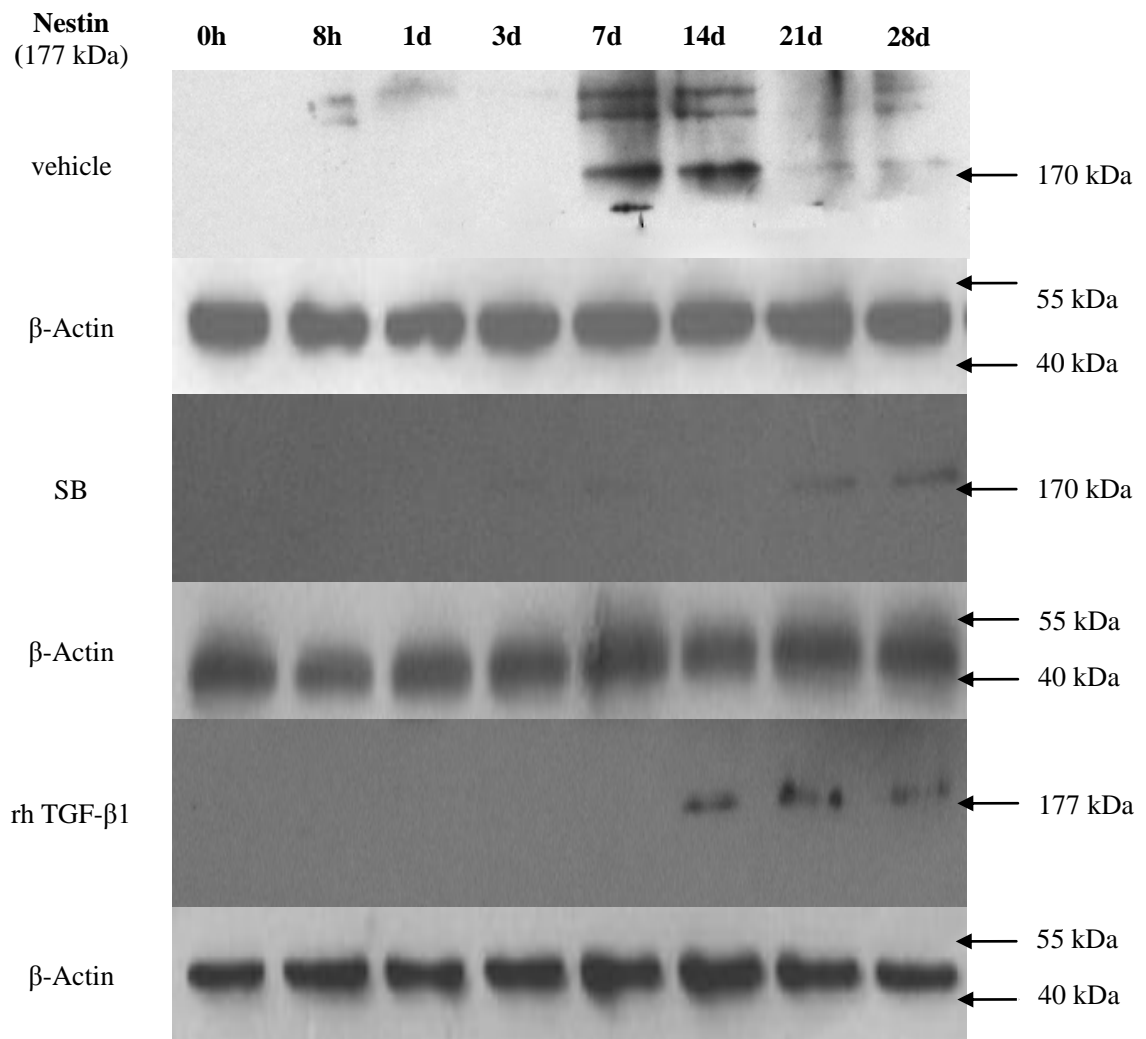


Figure 6A

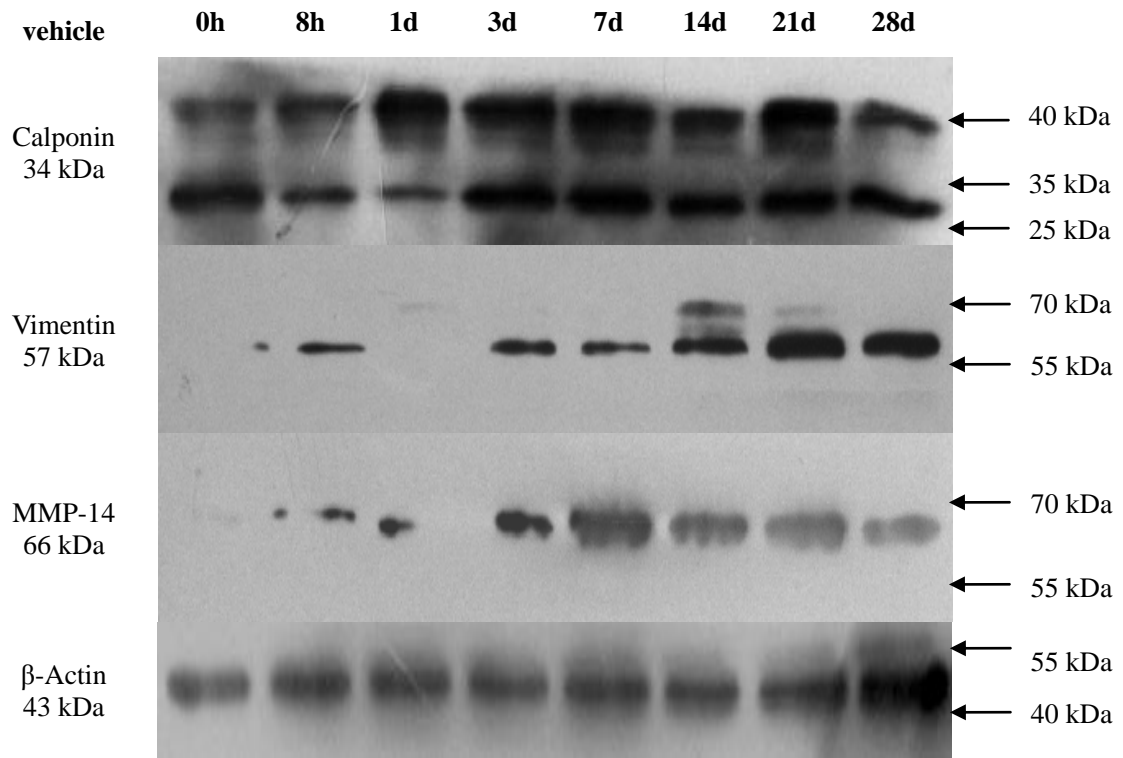


Figure 6B

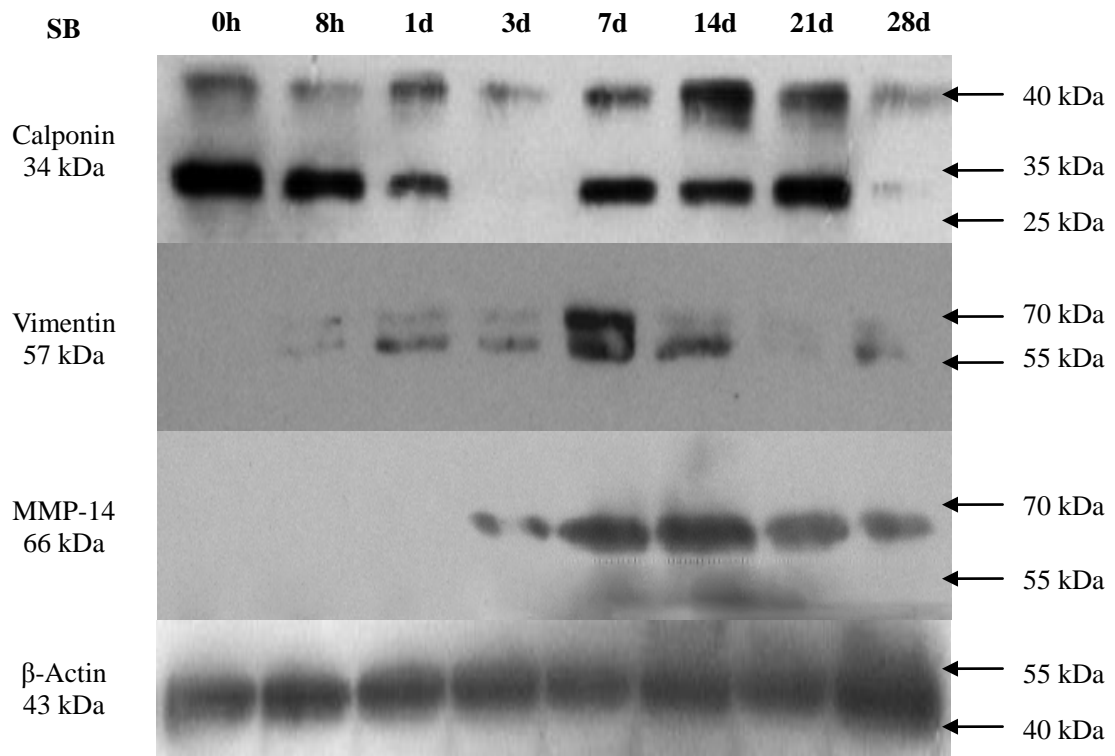


Figure 6C

