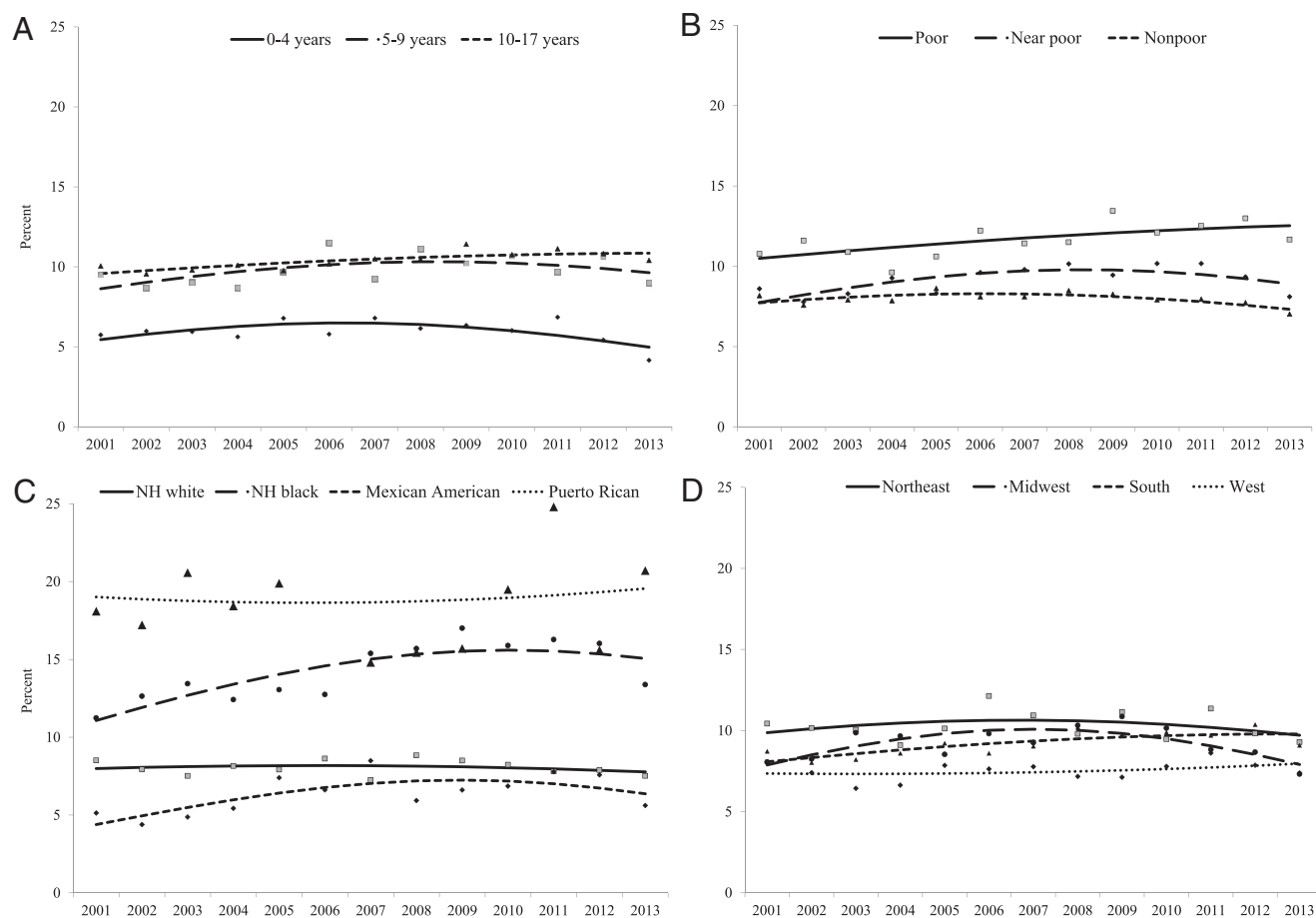


Supplemental Information



SUPPLEMENTAL FIGURE 4

Unadjusted predicted margins of current asthma prevalence among 0- to 17-year-olds by age group (A), poverty status (B), race/ethnicity (C), and geographic region (D): 2001–2013. Symbols represent annual current asthma prevalence estimates. Lines represent predicted margins of current asthma prevalence from unadjusted models. Source: CDC/NCHS, NHIS. NH, non-Hispanic.

SUPPLEMENTAL TABLE 1 Trends for Current Asthma Prevalence Among Children 0 to 17 Years of Age: United States, 2001–2013

	Shape of Trend
Age group	
0–4 years	Quadratic (F = 9.29)**
5–9 years	Quadratic (F = 3.93)*
10–17 years	Linear (F = 10.53)**
Poverty status	
Poor	Linear (F = 5.60)*
Near poor	Quadratic (F = 7.36)**
Nonpoor	Quadratic (F = 11.50)***
Race/ethnicity	
NH white	No significant trend
NH black	Quadratic (F = 8.15)**
Puerto Rican	No significant trend
Mexican American	Quadratic (F = 18.57)***
Geographic region	
Northeast	No significant trend
Midwest	Quadratic (F = 15.16)***
South	Linear (F = 6.77)**
West	No significant trend

Values were adjusted for age group, poverty status, race/ethnicity, geographic region, gender, family structure, and urbanicity and 4 interaction terms between time and (1) age, (2) poverty status, (3) race/ethnicity, and (4) geographic region. Significance or trend tested with orthogonal polynomial contrasts. * $P < .05$, ** $P < .01$, *** $P < .001$. NH, non-Hispanic.

SUPPLEMENTAL TABLE 2 Annual Linear Slopes for Modeled Trends in Current Asthma Prevalence

	Percentage Point Change per Year												
	2001	2002	2003	2004	2005	2006	2007	2008	2009	2010	2011	2012	2013
Age group													
0-4 years	0.31*	0.28*	0.22*	0.16	0.09	0.01	-0.07	-0.15*	-0.22*	-0.28*	-0.33*	-0.36*	-0.38*
5-9 years	0.40*	0.37*	0.34*	0.29*	0.23*	0.16*	0.09	0.01	-0.06	-0.13	-0.19	-0.24	-0.28
10-17 years	0.17	0.18	0.18	0.18*	0.16*	0.14*	0.12*	0.10*	0.08	0.06	0.05	0.04	0.04
Race/ethnicity													
NH white	0.01	0.02	0.02	0.01	0.01	0.00	-0.01	-0.02	-0.02	-0.02	-0.01	0.00	0.03
NH black	0.81*	0.77*	0.71*	0.62*	0.52*	0.40*	0.26*	0.13	0.00	-0.13	-0.24	-0.34	-0.42
NH other	0.42	0.38	0.32	0.24	0.16	0.07	-0.02	-0.11	-0.19	-0.27	-0.33	-0.37	-0.40
Puerto Rican	-0.02	0.01	0.03	0.04	0.05	0.05	0.06	0.06	0.08	0.09	0.12	0.16	0.21
Mexican	0.68*	0.67*	0.64*	0.56*	0.45*	0.31*	0.15*	-0.01	-0.17	-0.32*	-0.44*	-0.53*	-0.59*
Other Hispanic	0.02	0.03	0.03	0.03	0.03	0.03	0.02	0.01	0.02	0.02	0.03	0.05	0.08
Poverty status													
Poor	-0.01	0.04	0.08	0.11	0.13	0.15	0.17*	0.19*	0.22*	0.25	0.29	0.33	0.40
Near poor	0.44*	0.42*	0.38*	0.33*	0.26*	0.19*	0.11	0.02	-0.06	-0.13	-0.20	-0.25	-0.30
Nonpoor	0.29*	0.26*	0.22*	0.18*	0.12*	0.06	-0.01	-0.08	-0.14*	-0.19*	-0.24*	-0.28*	-0.30*
Region													
Northeast	0.32	0.29	0.25	0.20	0.14	0.07	0.00	-0.07	-0.14	-0.20	-0.25	-0.30	-0.33
Midwest	0.70*	0.64*	0.56*	0.45*	0.32*	0.17*	0.01	-0.15	-0.30*	-0.43*	-0.55*	-0.63*	-0.69*
South	0.20	0.20	0.20*	0.18*	0.17*	0.15*	0.12*	0.10*	0.07	0.05	0.03	0.02	0.01
West	-0.14	-0.10	-0.06	-0.02	0.01	0.03	0.05	0.08	0.10	0.13	0.16	0.20	0.25