

Supplemental on line Material
“Genetic mapping of stem rust resistance gene *Sr13* in tetraploid wheat (*Triticum turgidum* ssp. *durum* L.)”

Fig S1

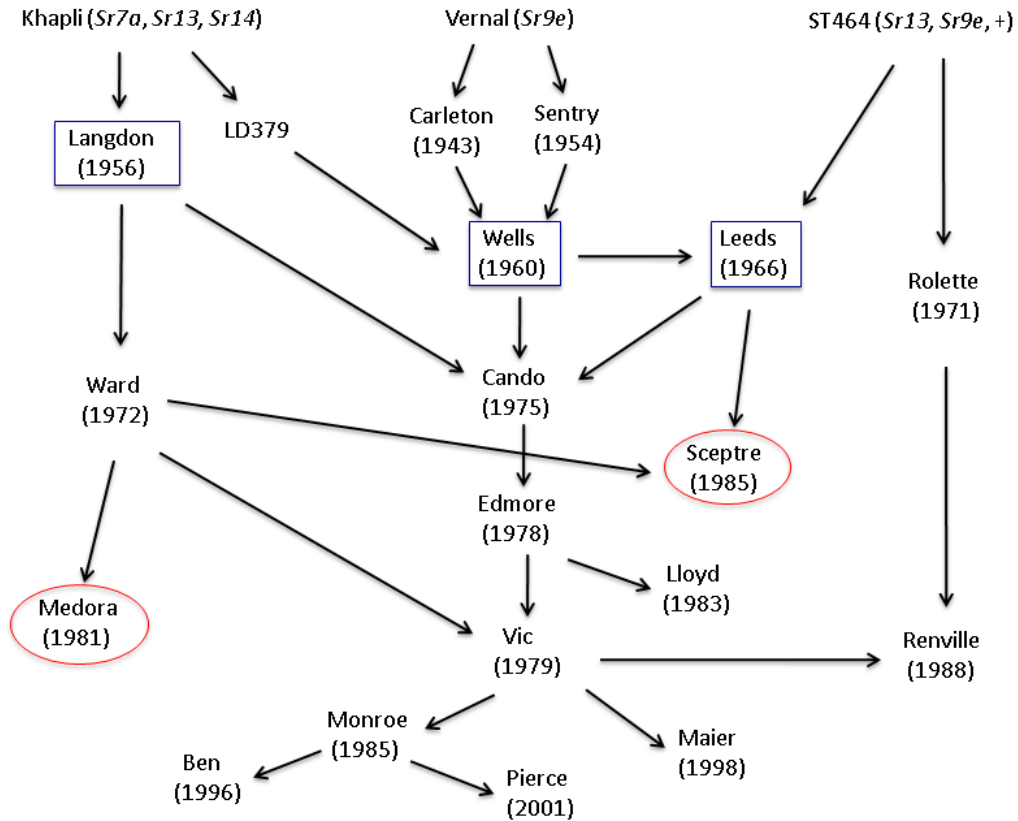


Figure S1 Resistance sources used, and the pedigree and year of release information for cultivars and germplasm developed in North Dakota durum wheat breeding program. Boxes indicate founders for the germplasm used in the study, and circles indicate the resistant parents used in the mapping populations.