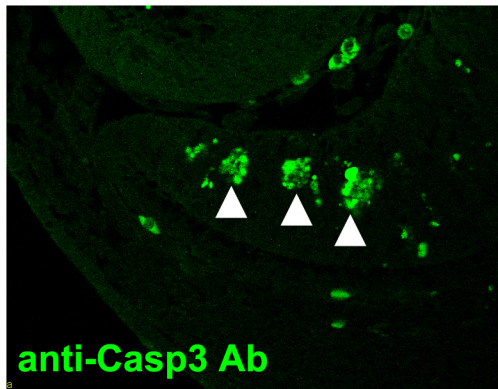
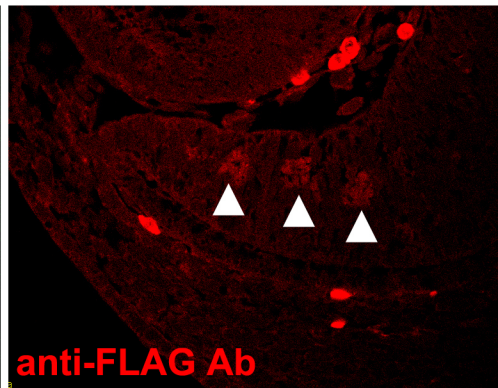


Supplementary Figure 1. The ectopic ephrin-A5 induced apoptotic cell death in an autonomous manner. The eA5- α -Cre double Tg embryo at E13.5 was isolated and then the horizontal sections of the neural retina were subjected to immunohistochemical staining with both anti-FLAG (red) and anti-cleaved caspase3 (green) antibodies. Note that the FLAG-tagged human ephrin-A5 is specifically expressed in the nasal retina and that these cells were also positive for anti-cleaved caspase3 antibodies.

A**B****C**