

Fig 1. IL-35 blockade reduces tumor burden in multiple transplantable tumor models

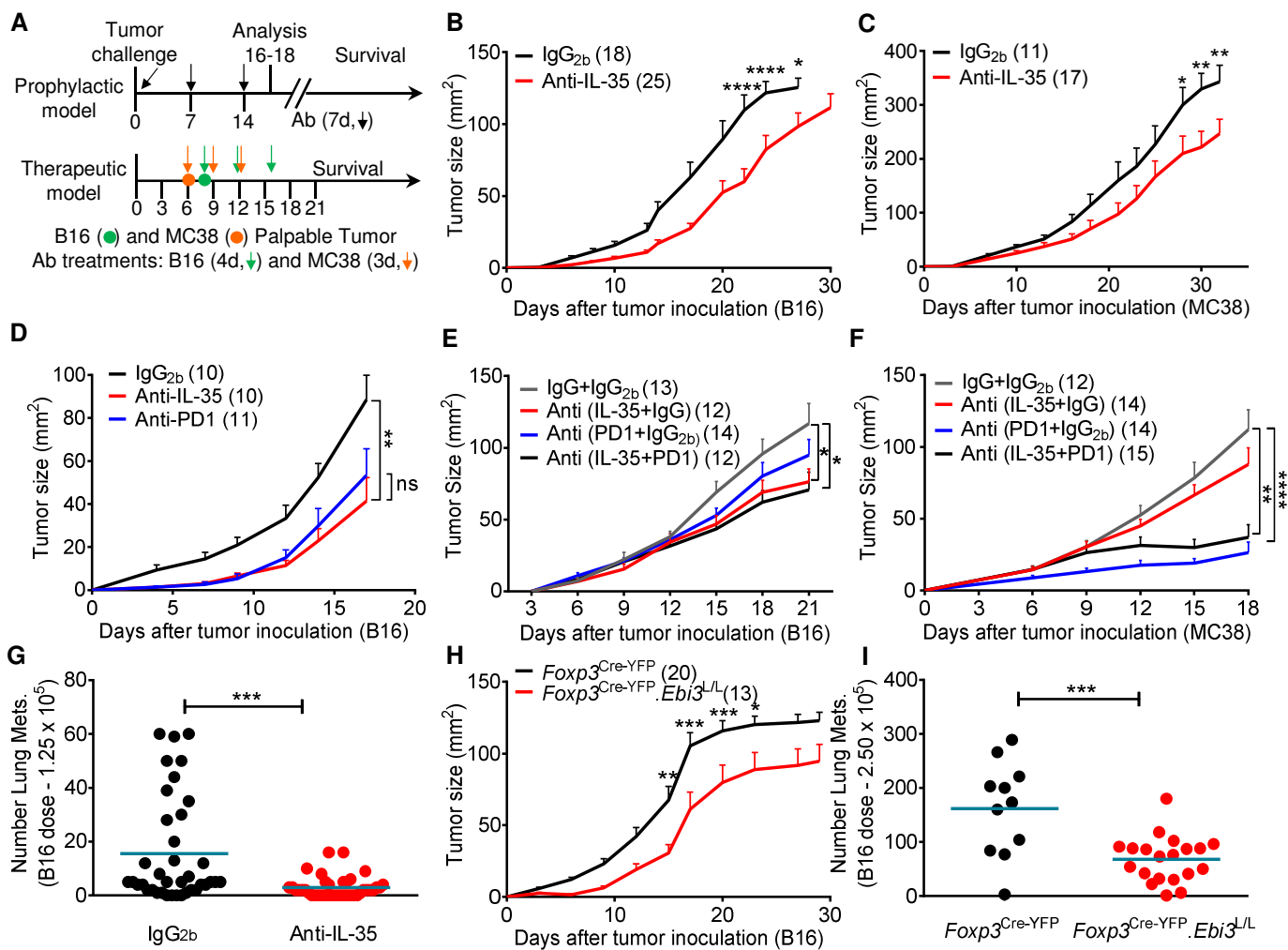


Fig 2. Neutralization of IL-35 enhances anti-tumor immune memory

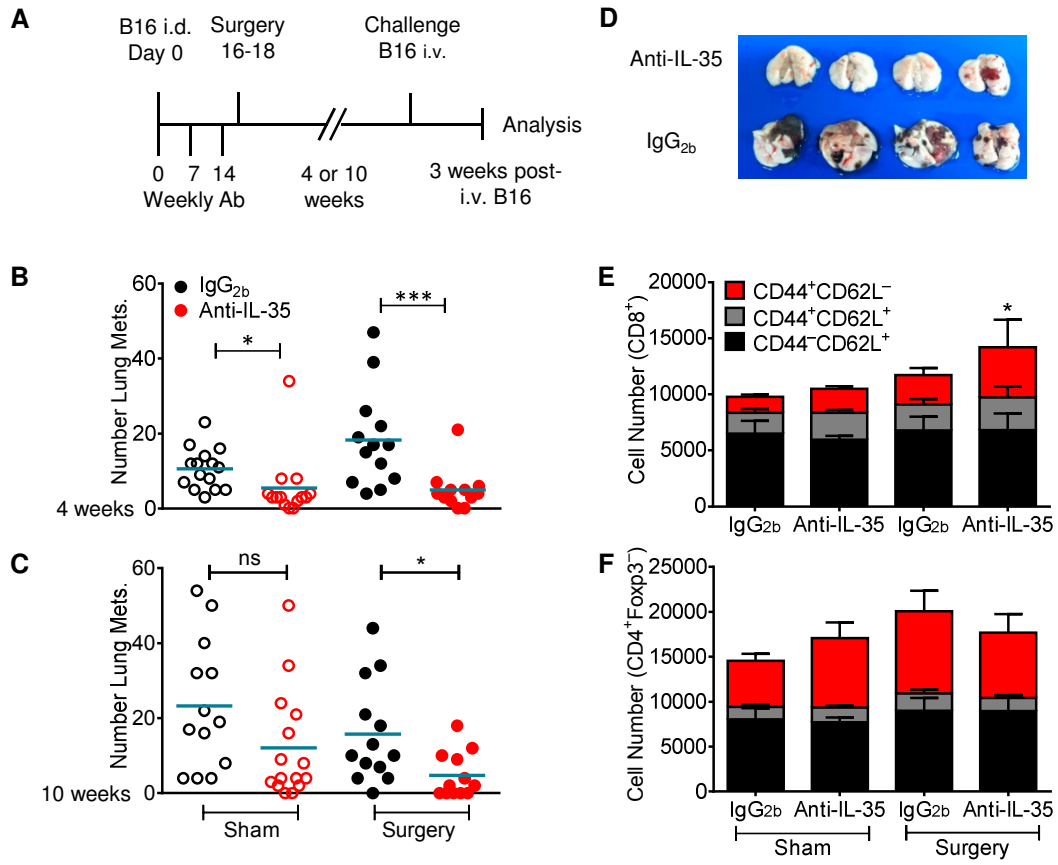


Fig 3. Neutralization of IL-35 enhances anti-tumor immunity in a genetically-induced tumor model

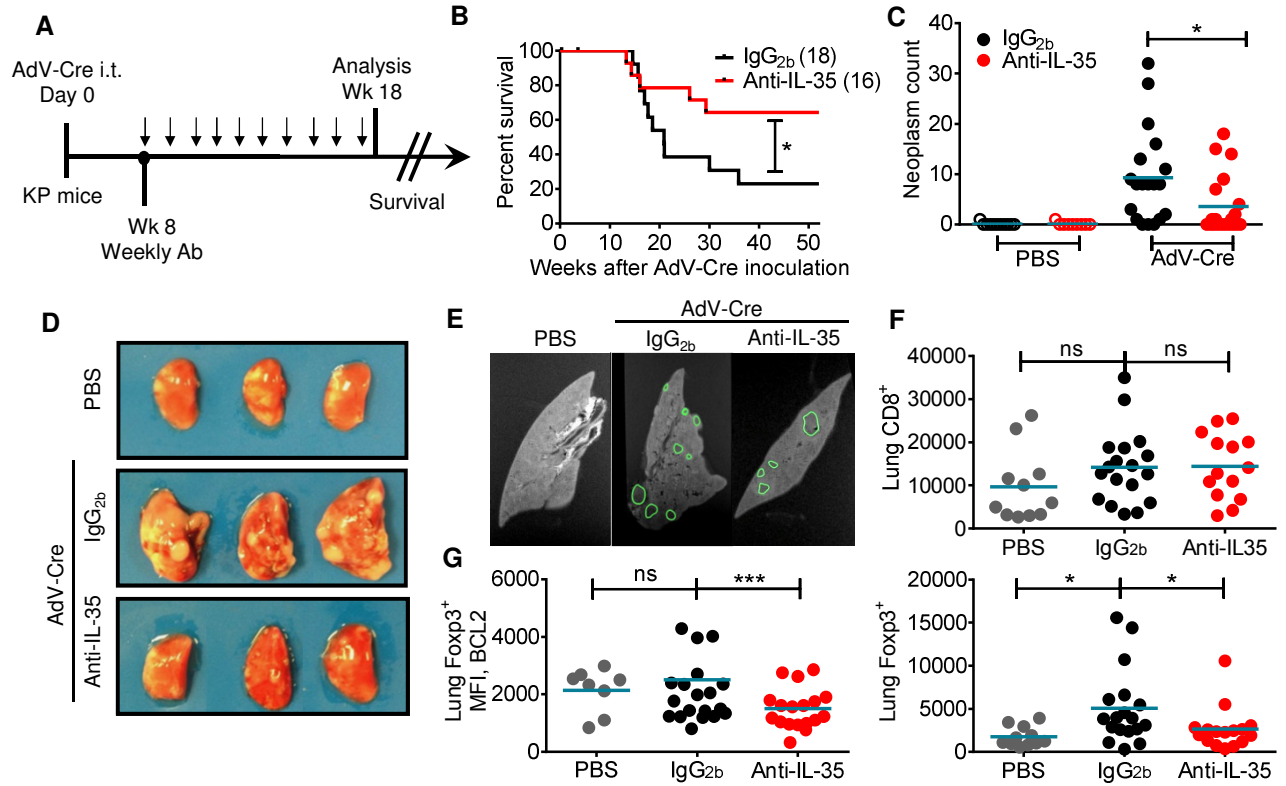


Fig 4. Increased percentages of functionally superior IL-35-expressing Tregs in TILs

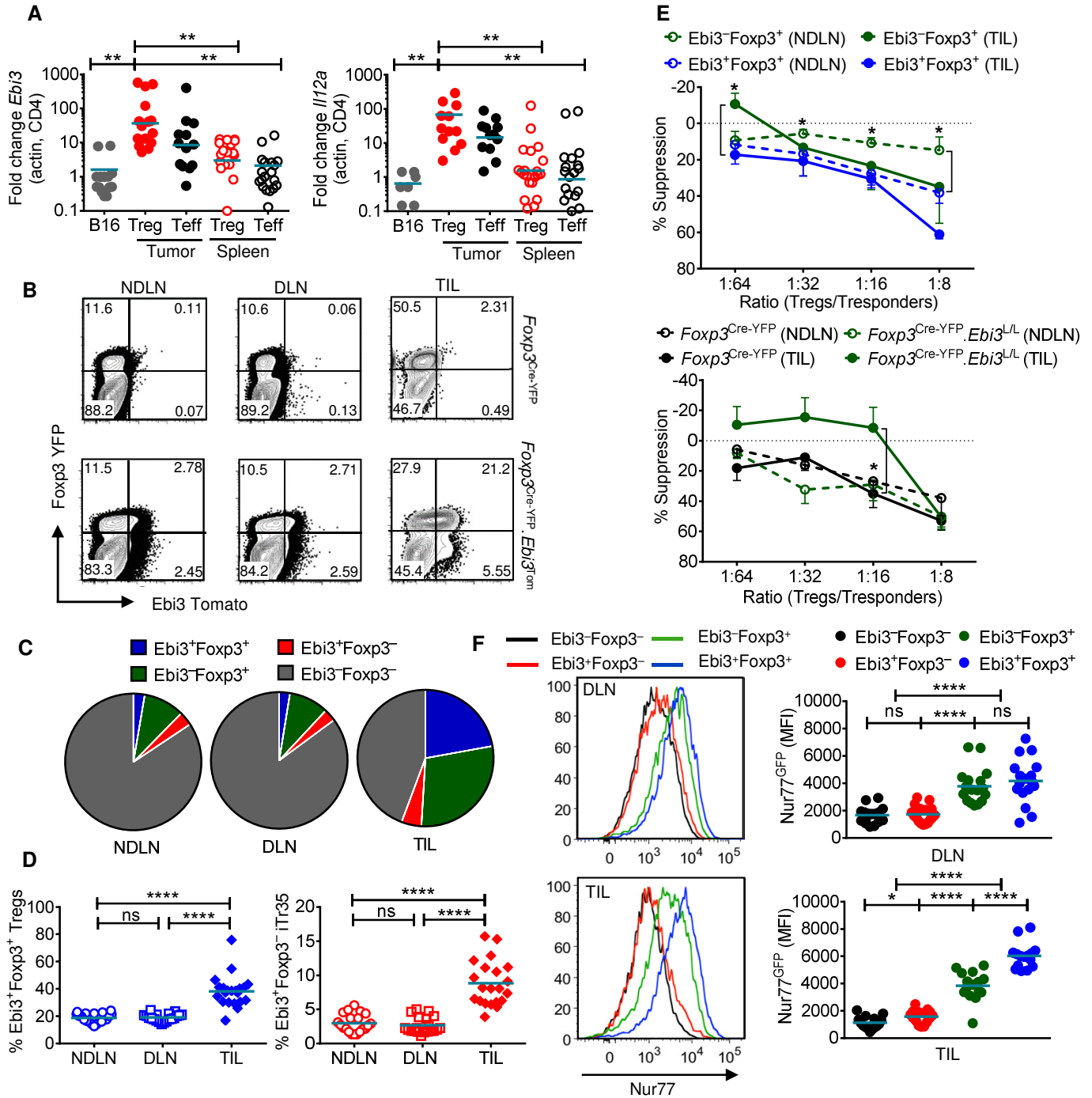


Fig 5. Increased infiltration and activation in the TILs of IL-35-neutralized mice

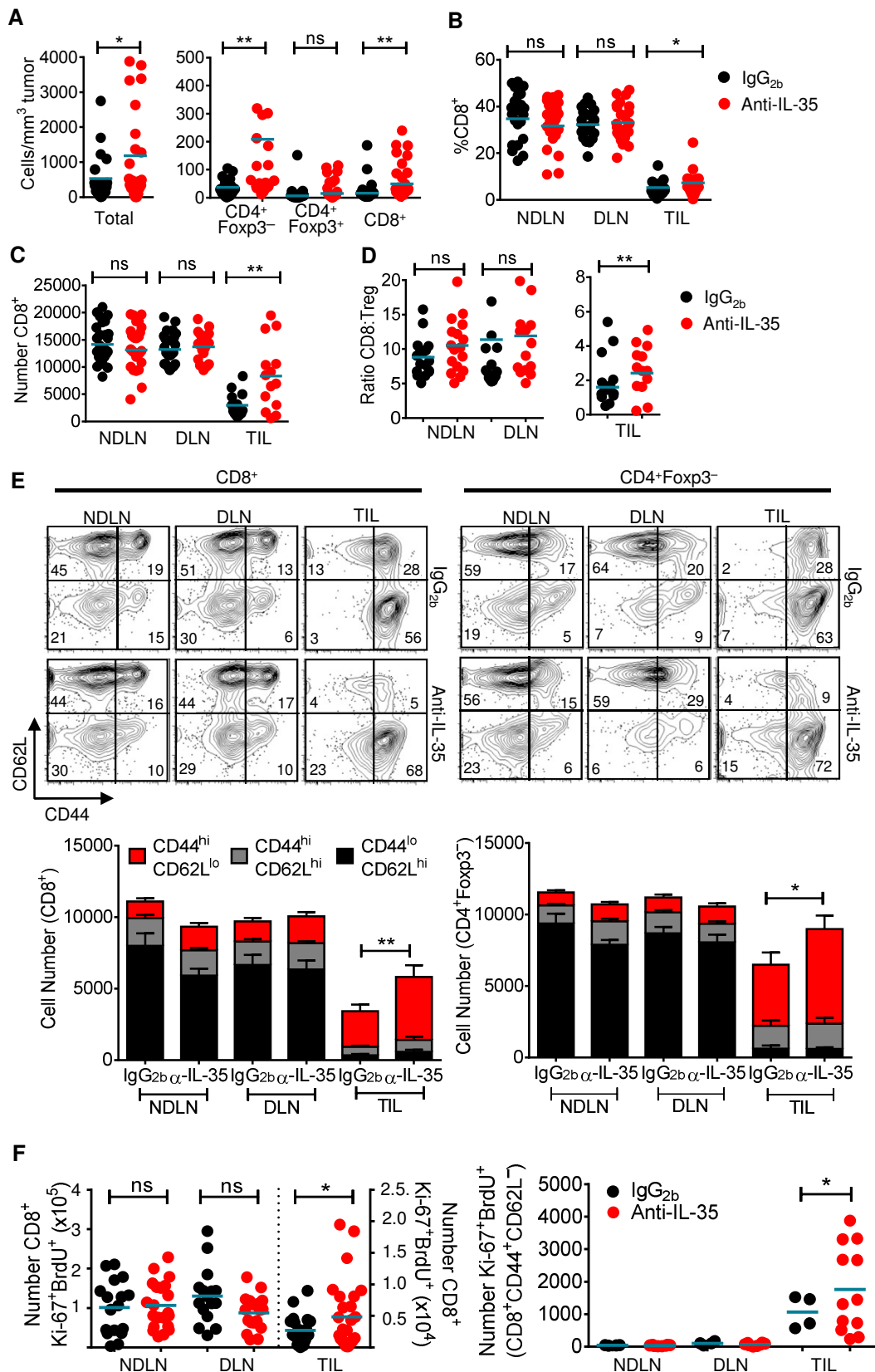


Fig 6. Enhanced cytokine production in tumor-associated tissues of IL-35-neutralized animals

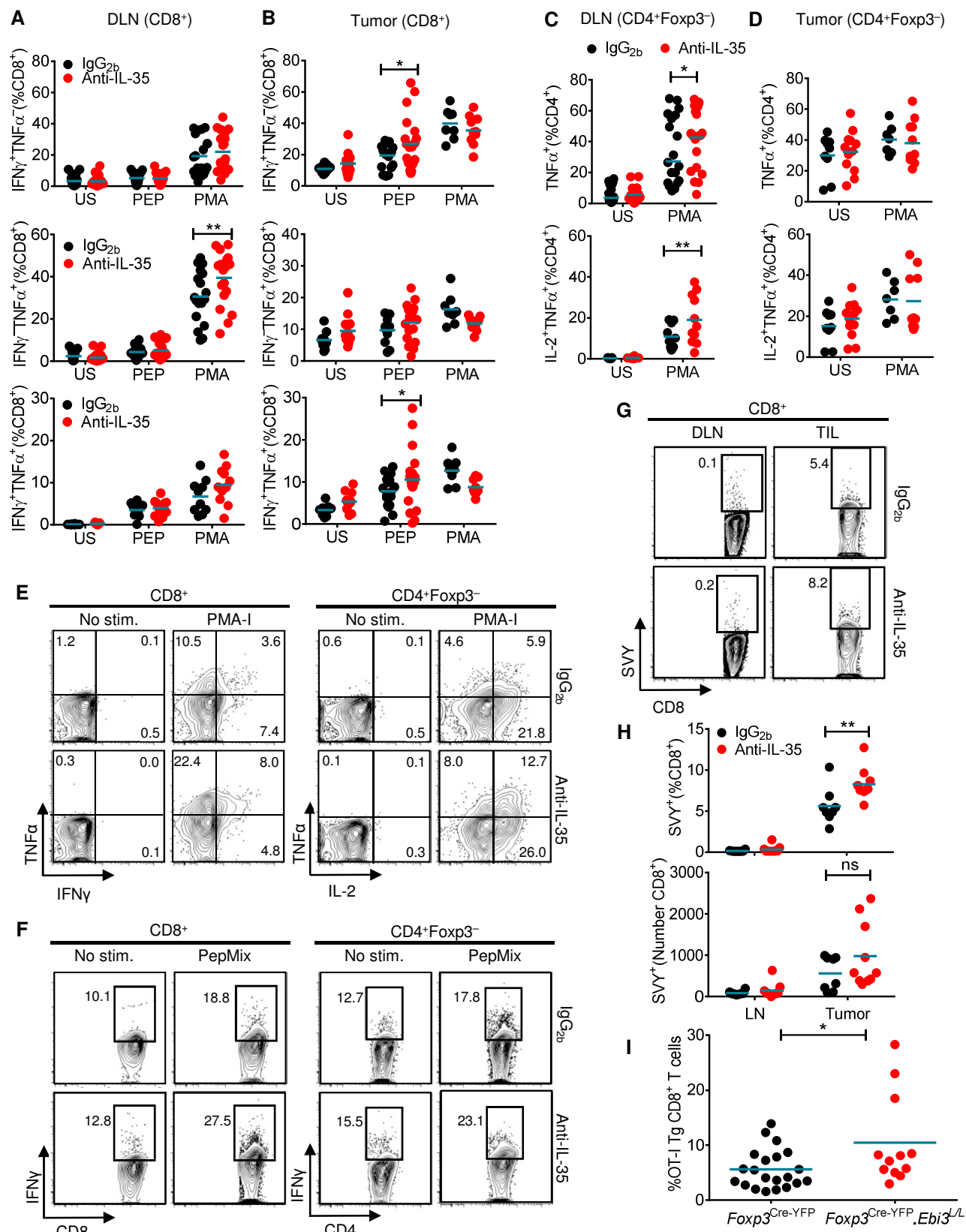


Fig 7. Treg-specific IL-35 deletion results in loss of exhausted T cells in the tumor microenvironment

