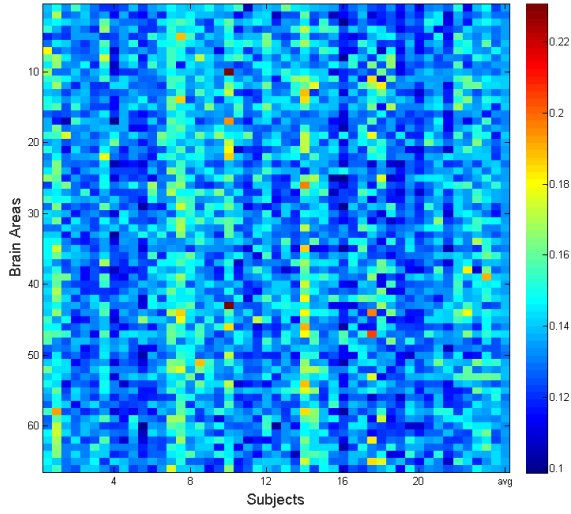


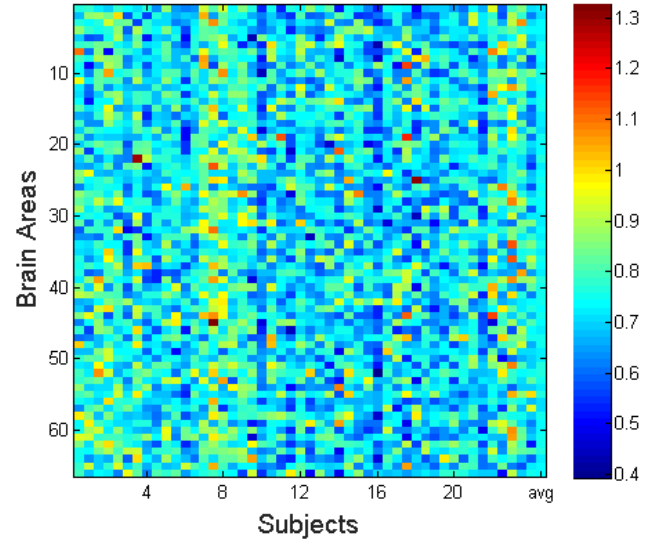
# Supplementary Figure 6

A

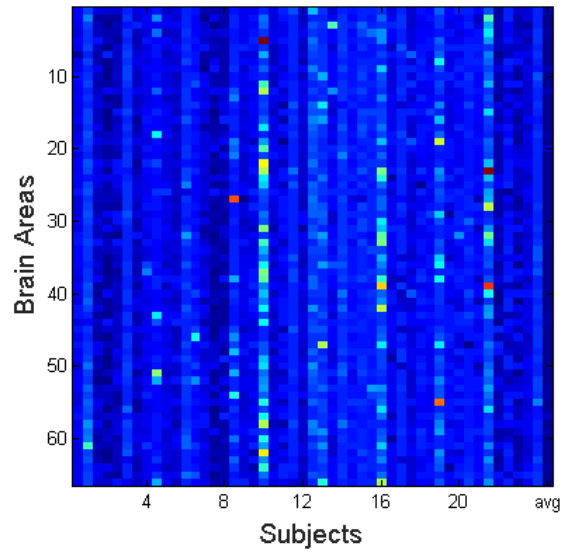
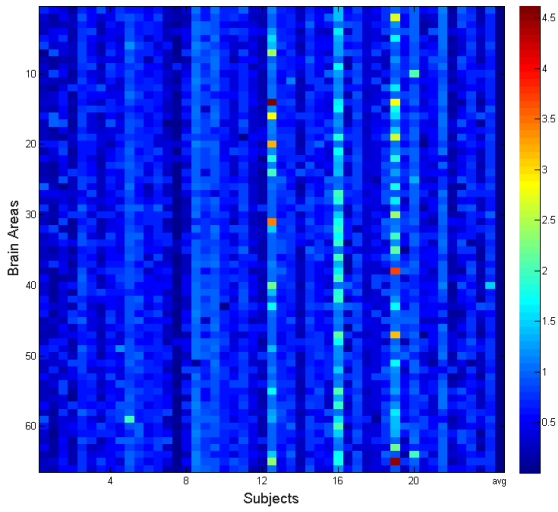
Linear test-statistic



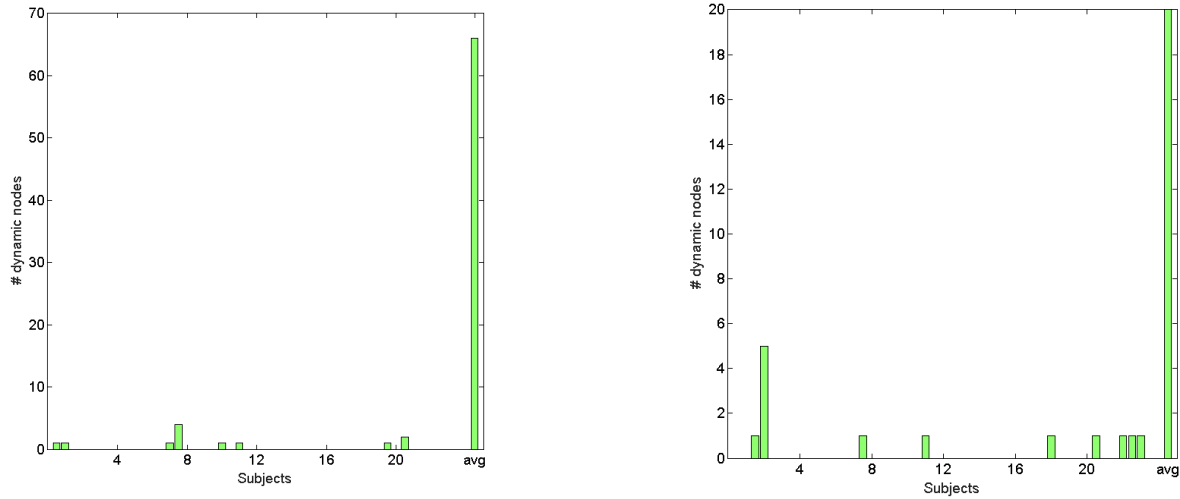
Non-linear test-statistic



B



C



**ROI-averaged dynamic functional correlations in human resting-state BOLD-fMRI.** A: ROI-averaged values of the linear (left panel) and non-linear (right panel) test-statistic for each of the ROIs and for each subject and session, as well as averaged across subjects and sessions (final columns). The correlation time-series of every ROI-pair in each session was obtained using a window-length of 2 minutes and a step size of 1 minute. V: p-values corresponding to test-statistic values in A, corrected for multiple comparisons using false discovery rate. Uncorrected p-values were obtained by comparing the observed values of the test-statistics with those from 10000 phase-randomized surrogate time-series. C: Number of ROIs with statistically significant (at 95% confidence level) test-statistic values calculated for each individual subject and session as well as averaged across subjects and sessions.

