

Salidroside attenuates PAH via AMPK α 1-dependent pathways

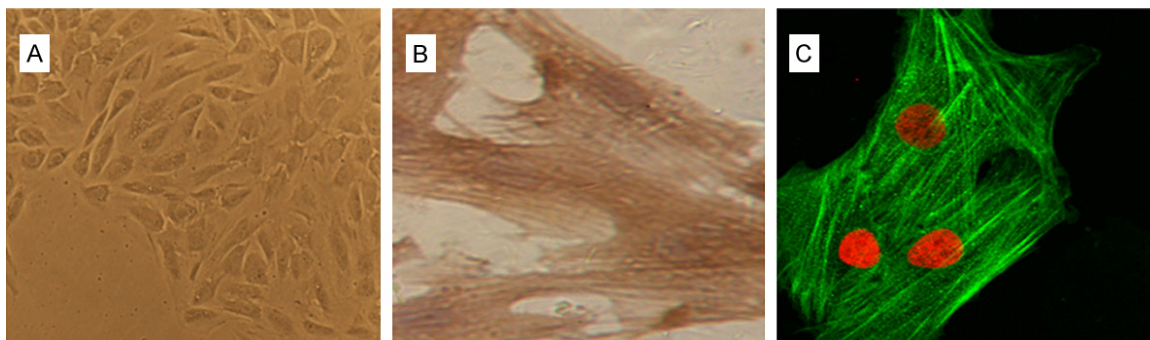


Figure S1. Characterization of PASMCs isolated from rats. (A) Morphology of primary PASMCs cells ($\times 100$). Immunocytochemical staining (B) ($\times 600$) and immunofluorescence staining (C) ($\times 600$) with anti- α -SMA antibody were used to identify PASMCs cells ($\times 400$).