

Prognostic significance of aromatase/ER β in lung adenocarcinoma

Table S1. Association between clinicopathological factors and immunoreactivity for aromatase in 150 lung adenocarcinomas

	Aromatase				P value	ER β				P value
	High expression		Low expression			Positive		Negative		
	N = 72	% (range)	N = 78	% (range)		N = 119	% (range)	N = 31	% (range)	
Age (years: median 69)	68	(40–83)	65	(36–84)	0.077	67	(40–83)	63	(36–84)	0.066
Sex										
Male	33	22.0	30	20.0		48	32.0	15	10.0	
Female	39	26.0	48	32.0	0.361	71	47.3	16	10.7	0.272
Smoking status										
Ever-smoker	35	23.3	33	22.0		54	36.0	14	9.3	
Non-smoker	37	24.7	45	30.0	0.438	65	43.4	17	11.3	0.573
Tumor diameter (mm)	25	(7–53)	23	(6–70)	0.377	25	(7–70)	20	(6–60)	0.050
Pathologic stage										
IA	38	25.3	47	31.4		62	41.3	23	15.4	
IB	14	9.3	12	8.0		23	15.4	3	2.0	
IIA	2	1.3	3	2.0		5	3.3	0	0.0	
IIB	4	2.7	2	1.3		4	2.7	2	1.3	
IIIA	12	8.0	10	6.7		20	13.3	2	1.3	
IIIB	2	1.3	4	2.7	0.763	5	3.3	1	0.7	0.207
Pleural invasion										
Absent	43	28.7	59	39.3		79	52.6	23	15.4	
Present	29	19.3	19	12.7	0.037	40	26.7	8	5.3	0.589
Lymphatic invasion										
Absent	48	32.0	53	35.3		79	52.6	22	14.7	
Present	24	16.0	25	16.7	0.867	40	26.7	9	6.0	0.399
Vascular invasion										
Absent	47	31.3	57	38.0		80	53.3	24	16.0	
Present	25	16.7	21	14.0	0.301	39	26.0	7	4.7	0.191
EGFR mutation										
Mutant	33	23.6	29	20.7		53	37.9	9	6.4	
Wild type	35	25.0	43	30.7	0.326	59	42.1	19	13.6	0.108
KRAS mutation										
Mutant	10	7.1	13	9.3		19	13.6	4	2.9	
Wild type	58	41.4	59	42.2	0.593	93	66.4	24	17.1	0.493
Aromatase										
High expression						60	40.0	12	8.0	
Low expression						59	39.3	19	12.7	0.168
ER α										
Positive	1	0.7	1	0.7		2	1.3	0	0.0	
Negative	71	47.3	77	51.3	0.731	117	78.0	31	20.7	0.628
ER β										
Positive	60	40.0	59	39.3						
Negative	12	8.0	19	12.7	0.168					
PR										
Positive	2	1.3	2	1.3		4	2.7	0	0.0	
Negative	70	46.7	76	50.7	0.659	115	76.7	31	20.6	0.392
HER2										
Positive	4	2.7	3	2.0		7	4.7	0	0.0	
Negative	68	45.3	75	50.0	0.455	112	74.7	31	20.6	0.190
Ki-67 LI (%)	18.9	(1.0–63.1)	17.3	(0.2–93.6)	0.582	18.2	(1.0–66.4)	17.5	(0.2–93.6)	0.865

EGFR, epidermal growth factor receptor; ER, estrogen receptor; PR, progesterone receptor; HER2, human epidermal growth factor receptor 2; LI, labeling index.

Prognostic significance of aromatase/ER β in lung adenocarcinoma

Table S2. Univariate analysis of prognostic factors using the log-rank test in *EGFR* mutant cases

Variable	No. of patients (%)	5-year OS (%)	Univariate <i>P</i> value	5-year RFS (%)	Univariate <i>P</i> value
All cases	62 (100.0)	83.9		69.3	
Age (years: median 69)					
<69	34 (54.8)	85.3		67.5	
\geq 69	28 (45.2)	82.1	0.487	71.4	0.854
Sex					
Male	19 (30.6)	89.5		73.7	
Female	43 (69.4)	81.4	0.393	67.4	0.678
Smoking status					
Ever-smoker	19 (30.6)	84.2		63.2	
Non-smoker	43 (69.4)	83.7	0.867	72.1	0.500
Pathologic stage					
I, II	33 (53.2)	92.2		82.4	
III	29 (46.8)	36.4	<0.001	9.1	<0.001
Pleural invasion					
Absent	48 (77.4)	87.5		74.9	
Present	14 (22.6)	71.4	0.198	50.0	0.039
Lymphatic invasion					
Absent	46 (74.2)	91.3		82.6	
Present	16 (25.8)	62.5	0.016	31.3	<0.001
Vascular invasion					
Absent	47 (75.8)	89.4		80.9	
Present	15 (24.2)	66.7	0.078	33.3	0.001
<i>KRAS</i> mutation					
Mutant	0 (0.0)	—		—	
Wild type	62 (100.0)	83.9	—	69.3	—
Aromatase					
High expression	33 (53.2)	81.8		69.7	
Low expression	29 (46.8)	86.2	0.861	69.0	0.915
ER α					
Positive	0 (0.0)	—		—	
Negative	62 (100.0)	83.9	—	69.3	—
ER β					
Positive	53 (85.5)	84.9		67.9	
Negative	9 (14.5)	77.8	0.575	77.8	0.677
PR					
Positive	1 (1.6)	100.0		100.0	
Negative	61 (98.4)	83.6	0.649	68.8	0.542
HER2					
Positive	3 (4.8)	66.7		33.3	
Negative	59 (95.2)	84.7	0.501	71.1	0.034
Ki-67 LI (%: median 11.5)					
Low score	33 (53.2)	93.9		90.9	
High score	29 (46.8)	72.4	0.011	44.8	<0.001

OS, overall survival; RFS, recurrence-free survival; ER, estrogen receptor; PR, progesterone receptor; HER2, human epidermal growth factor receptor 2; LI, labeling index.

Prognostic significance of aromatase/ER β in lung adenocarcinoma

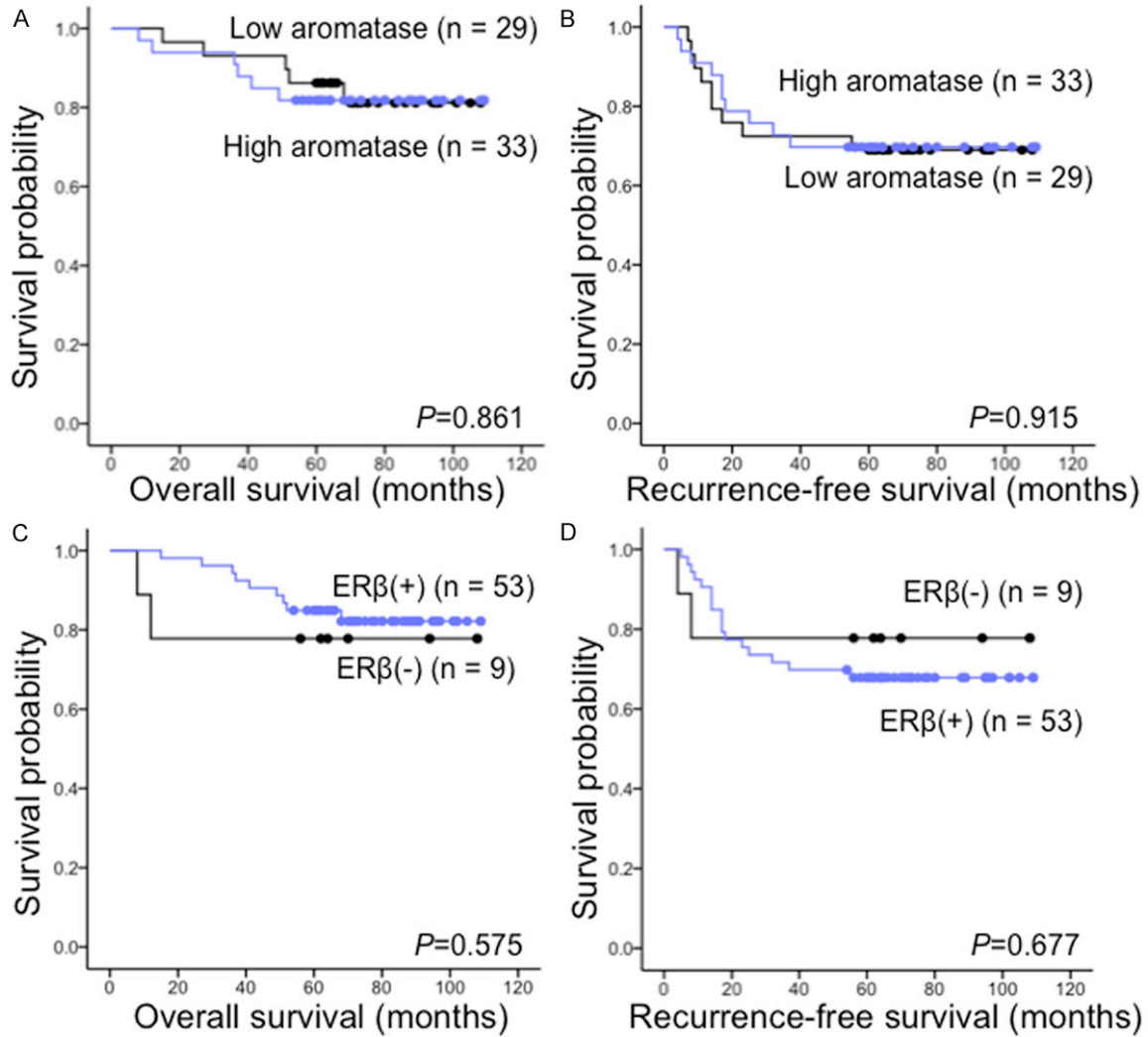


Figure S1. Kaplan-Meier survival curves of 62 lung adenocarcinoma patients with EGFR mutations according to the immunoreactivity results for aromatase and ER β . A. Overall (OS) stratified by high versus low expression of aromatase. B. Recurrence-free survival (RFS) stratified by high versus low expression of aromatase. C. OS stratified by positive versus negative expression of ER β . D. RFS stratified by positive versus negative expression of ER β .