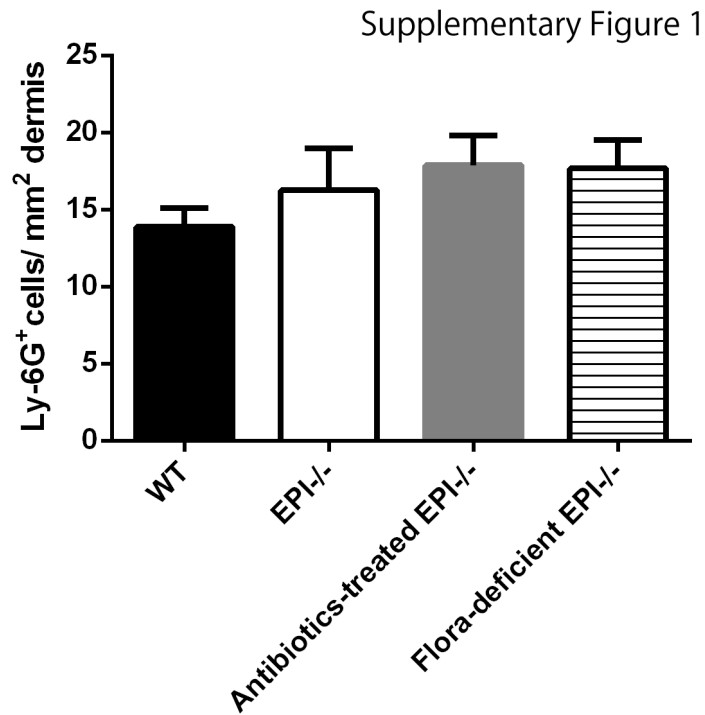
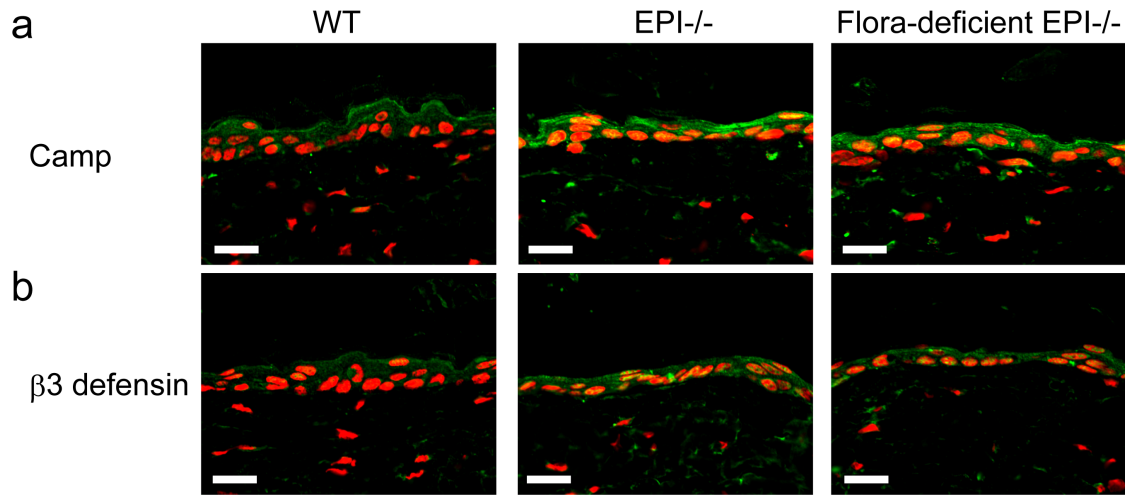


Supplementary Figures



Supplementary Figure 1. Quantification of Ly6G+ dermal cells. Number of Ly6G+ cells per mm² dermis in WT, EPI^{-/-}, antibiotics-treated EPI^{-/-} and flora-deficient EPI^{-/-} skin. Data are means \pm SEM from at least 4 mice per group. No statistically differences were found between groups.

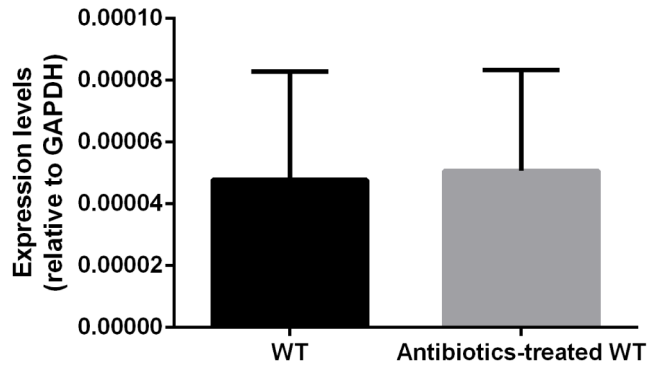


Supplementary Figure 2. AMP expression in EPI-/- epidermis. (A, B)

Immunofluorescence labelling of Camp (**A**) and β 3 defensin, encoded by Defb3, (**B**) in WT, EPI-/- and flora deficient EPI-/- skin (green fluorescence, with red propidium iodide nuclear counter-stain). Scale bars: 20 μ m.

Supplementary Figure 3

Serpina1b



Supplementary Figure 3. Serpina1b expression in WT epidermis treated with antibiotics. qRT-PCR of Serpina1b in WT and antibiotic-treated WT epidermis. Data are means \pm SEM from 4 mice per group. No statistically significant differences were found between groups.